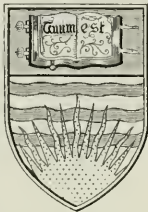


STORAGE-ITEM
FINE ARTS

LP5-M21B

U.B.C. LIBRARY



Library
of the University of
British Columbia

— . . . —
CARNEGIE GRANT, 1932 - 34
—
▽

Accession No. 101994 Call No. ND625. U5

THE LIBRARY



THE UNIVERSITY OF
BRITISH COLUMBIA



Digitized by the Internet Archive
in 2010 with funding from
University of British Columbia Library

The University Prints

STUDENT SERIES D

ART OF
THE NETHERLANDS
AND GERMANY

Five Hundred Reproductions Illustrating

THE FLEMISH, DUTCH, AND GERMAN SCHOOLS OF
PAINTING FROM THE EARLY FIFTEENTH
TO THE EIGHTEENTH CENTURY

GERMAN SCULPTURE FROM THE ELEVENTH TO
THE SEVENTEENTH CENTURY

EDITED BY

H. H. POWERS, PH.D.

MARY MONTAGUE POWERS, A.B.



BUREAU OF UNIVERSITY TRAVEL
BOSTON

COPYRIGHT, 1907
BY
BUREAU OF UNIVERSITY TRAVEL

BOSTON
THE EVERETT PRESS
1907

Introduction

THE series here presented carries on in the field of Northern Art the work begun in the two series already published, which illustrate the development of art in Italy during the Early and Late Renaissance.

The earlier painters of the Low Countries have, in accordance with the latest scholarship, been grouped together under the general head of the *School of the Netherlands*, illustrated by the first ninety-seven numbers. Until the war with Spain, after which only can Holland be said to exist except as a petty province, the artists of both northern and southern provinces mingled freely and, wherever their birthplace, soon found their way to Bruges or to Antwerp, the early centers of artistic inspiration and patronage.

The later history of the two sections of country on either side of the Maas is not more strikingly different than was their art-development.

The southern provinces, after one of the most cruel wars on record, returned to their Spanish allegiance and continued in the Catholic faith. Rubens and Van Dyck are the ruling spirits of this period of *Later Flemish Painting*, covered by ninety-two illustrations.

Religious and political conditions differentiated sharply the work of the Dutch painters from that of the Flemings from 1580 on. Hals and Rembrandt are the great names, but the long list of the "Little Dutchmen" serves to show the growth and prosperity of Holland after her triumph in the struggle for political and religious liberty. One hundred and seventy-three prints catalogued under *Dutch School* amply illustrate this period.

In the treatment of German Art, in which are included fifty numbers given to *German Sculpture*, besides the eighty-eight devoted to *German Painting*, every effort has been made to secure a representative and consecutive record of its development from those early days of Bernward, the art-loving Bishop of Hildesheim, to the culmination of the school in the art of Albrecht Dürer and Peter Vischer, and something of success has been attained. The difficulties are, however, twofold: first and most fundamental, the fact that the stormy and disintegrated condition of Germany prevented the consistent development of a protected and nurtured art, Nuremberg being almost the only center of sustained effort; second, the difficulty and in many cases the impossibility of securing photographs of important works which do exist scattered through the smaller cities of the Empire. Despite these difficulties, we feel sure that the student will find here a consecutive and fairly complete record of what Germany has given to the world of art before the opening of the modern period. It finds its appropriate place by the side of Dutch and Flemish Art—not alone because they were contemporaneous, but because they are marked by the same characteristics which distinguish them sharply from the work of Italy and mark their northern spirit.

The lover of beauty, even the earnest student of art from the historical side, can scarcely fail to find his heart sinking as he turns over these pages after becoming thoroughly conversant with the art of the Italian Renaissance. He misses both the homely and the graceful stories told by Giotto and Ghiberti; the pensive pathos of the Madonna of Botticelli and his delicate play of fancy, as well as the riper, completer beauty of Leonardo and Raphael, and the mastery of thought and expression of Michelangelo. The ideal seems lost, so unconvincing and so unattractive are these northern saints and Madonnas. Is art, then, lacking?

Only a cursory study is necessary to reveal first of all that

most fundamental quality of all art—sincerity. Genuineness and nobility of thought are as characteristic of Hubert and Jan Van Eyck as of Orcagna, Fra Angelico, or Ghiberti, their Italian contemporaries. And if they lack that ability to give us the beauty of face and form to which we are accustomed, they are better able to bring to us the reality of the actual personages whom they portray. Madonnas and saints may vary greatly from preconceived or traditional conceptions, but with the donors — the well-to-do burghers and their families, anxious to perpetuate their memories among neighbors or descendants — with these most actual people we feel at once at home. Homely indeed they are, as the artist has uncompromisingly told us, but so are our own friends and neighbors — nor do we like them the less for that. While in Italian Art we dwell among the clouds, feasting our eyes upon ideals, amongst these Northerners we tread the actual earth amongst friends and acquaintances, even though we may never meet them. More than this, we are charmed constantly by the skill and the conscientious care with which every piece of work is done. From Jan Van Eyck and Memling, down through Terborch and Dou to the latest of the decadents, scarcely once will you find a careless brush-stroke. One cannot but admire and enjoy work so perfectly, so exquisitely done.

Religion, politics, and social conditions, as well as natural bent, combined to give prominence, on the one side, to the genre-piece; on the other, to the portrait — not painted for the glory of God, not to adorn the cloister or the altar-wall, to inspire to prayer and contemplation, but for the every-day enjoyment of the people in their homes, to perpetuate the memory of some ancestor or city-father, to reflect scenes with which the home was already familiar. This was the task of the northern artist. And as often in Italian Art we forgive the crudities of form and execution because of the aspiration, the beauty of thought and face still so evident after all the vicissitudes of years, so we

hang over these little Flemish and Dutch canvases with loving intimacy; because, commonplace, even vulgar though the theme may be, their reality and their perfection give them a permanent place in our admiration.

The field of art is wide, and the ruggedness, even the grotesqueness, of this northern art forms a suggestive pendant to the suavity, the idealism, of the southern and more classic art. Idealism and Realism — these are the two elements which have ever struggled for supremacy. From both the modern world learns to gather its enjoyment and its inspiration.

Contents

	PAGE
INTRODUCTION	III
ILLUSTRATIONS OF SCHOOLS OF ART IN THE NETHERLANDS AND GERMANY	
PAINTING	
Early School of the Netherlands	
	NO.
Hubert van Eyck	c.1366 -1426 } 1-10
Jan van Eyck	c.1382 -1440 } 1-10
Roger van der Weyden	1400 -1464 } 20-25
School of Van der Weyden	26
Aelbert van Ouwater	fl.1430 -1460 } 27
Unknown Dutch Master	c.1470 } 28
Petrus Cristus	c.1400 -1473? } 29-31
Dierick Bouts	d.1475 } 32-34
Justus of Ghent	b.1410? } 35
Hans Memling	c.1430 -1494 } 36-46
Hugo van der Goes	c.1435 -1482 } 47, 48
Gerard van der Meire	1450?-1512 } 49, 50
Hieronymus van Aeken (Bosch)	1462?-1516 } 51
Gheerardt David	1450?-1523 } 52-56
Quentin Metsys	1466 -1530? } 57-66
School of the Netherlands	
Jan Gossaert (Mabuse)	1470?-1541 } 67-71
Jan Mostaert	c.1474 -1555 } 72, 73
Jacob Cornelisz van Oostanen	1470?-1533 } 74
Lucas van Leyden	1494 -1533 } 75-77
Maerten van Heemskerk (van Veen)	1494?-1574 } 78, 79
Jan van Scorel	1495?-1562 } 80-82
Joachim Patinir	d.1548? } 83
Herrî met de Bles (Civetta)	1480?-1550? } 84, 85
Bernaert van Orley	c.1490 -1542 } 86-88
Antonis Mor (Sir Anthony More)	1512?-1581 } 89-91
Frans Floris (Vriendt)	1518?-1570 } 92
Pieter Brueghel, the Elder	1530?-1560 } 93, 94
Martin de Vos	1532 -1603 } 95
Frans Pourbus, the Elder	1545 -1580 } 96
Pieter Brueghel, the Younger	1564?-1638 } 97
Late Flemish School	
Jan Brueghel	1568 -1625 } 98, 99
Frans Pourbus, the Younger	1570 -1622 } 100

~	Peter Paul Rubens	1577 -1640	101-140
	Peter Paul Rubens and Frans Snyders		141
	Frans Snyders	1579 -1657	142-144
	David Teniers, the Elder	1582 -1640	145
	Gaspard de Craeyer	1584 -1669	146, 147
	Cornelis de Vos	1585 -1651	148
—	Jacob Jordaens	1593 -1678	149-152
	Justus Sustermans	1597 -1681	153, 154
≡	Anthony van Dyck	1599 -1641	155-170
	Simon de Vos	1603 -1676	180
	David Teniers, the Younger	1610 -1690	181-187
	Sir Peter Lely (Van der Faes)	1618 -1680	188, 189

Dutch School

	Michiel Jansz van Miereveld	1567 -1641	190, 191
	Jan Ravesteyn	1572 ?-1657	192
—	Frans Hals	1580 ?-1666	193-208
	Gerard van Honthorst (della Notte)	1590 -1656	209, 210
	Thomas de Keyser	1596 -1679	211, 212
	Jan van Goyen	1596 -1656	213, 214
	Aart van der Neer	1603 -1677	215, 216
	Adriaen Brouwer	1605 -1641	217-219
	Rembrandt Harmensz van Rijn	1606 -1669	220-270
	Adriaen van Ostade	1610 -1685	271-274
	Gerard Dou	1613 -1675	275-279
	Bartholomew van der Helst	1613 -1670	280-283
	Govaert Flinck	1615 -1660	284, 285
	Ferdinand Bol	1616 -1680	286-288
—	Gerard ter Borch	1617 -1681	289-296
	Philips Wouwermann	1619 -1668	297-300
	Claes Pietersz Berchem	1620 -1683	301, 302
	Aelbert Cuyp	1620 -1691	303-307
	Isaac van Ostade	1621 -1649	308, 309
	Allart van Everdingen	1621 -1675	310, 311
	Karel du Jardin	1622 -1678	312
	Paulus Potter	1625 -1654	313-316
—	Jan Havicksz Steen	1626 -1679	317-319
—	Jacob Isaacksz van Ruisdael	1628 ?-1682	320-325
—	Gabriel Metsu	1630 -1667	326-330
—	Pieter de Hooch	1630 -1677 ?	331-335
—	Johannes Vermeer	1632 -1675	336-339
	Nicolaes Maes	1632 -1693	340-344
	Jan Bray	d.1697	345
	Willem van de Velde	1633 -1707	346-348
	Frans van Mieris	1635 -1681	349, 350
	Melchior d'Hondecoeter	1636 -1695	351
—	Meindert Hobbema	1638 -1700	352, 353
	Caspar Netscher	1639 -1684	354-356
	Jan Weenix	1640 -1719	357
	Godfried Schalken	1643 -1706	358
	Adriaen van der Werff	1659 -1722	359

Willem van Mieris	1662-1747	360, 361
Jan van Huysum	1682-1740	362

German School

Meister von Soest	fl. 1250-1270	363
Meister Wilhelm	fl. late XIV century	364
Imhoff Altarpiece	" " "	365
Stephan Lochner	d. 1451	366-369
Frederick Herlen	1440?-1491?	370
Master of the Life of Mary	fl. 1400-1480	371
Unknown Nuremberg Master	fl. 1460-1500	372
Master of the Lyversberg Passion	fl. 1463-1480	373
Master of Cologne	XV century	374
Michael Wolgemut	1434-1519	375, 376
Martin Schongauer	c. 1450-1491	377, 378
Bartholomäus Zeitblom	c. 1450-1518	379
Hans Holbein, the Elder	c. 1460-1524	380-382
Master of the Death of Mary	d. 1540	383, 384
Hans von Kulmbach	d. 1540?	385, 386
Albrecht Dürer	1471-1528	387-414
Lucas Cranach, the Elder	1472-1553	415-421
Hans Baldung Grien	c. 1475-1545	422, 423
Hans Burgkmair, the Elder	1473-1531	424, 425
Albrecht Altdorfer	c. 1488-1538	426, 427
Matthias Grünewald	fl. 1518-1530?	428
Hans Holbein, the Younger	1497-1543	429-442
Georg Pencz	1500-1550	443
Christoph Amberger	c. 1500-1561?	444, 445
Heinrich Aldegrever	c. 1502-1558?	446
Bartel Beham	1502-1540	447
Anton Raphael Mengs	1728-1774	448-450

GERMAN SCULPTURE

Bishop Bernward	XI century	451, 452
Unknown Sculptors	XIII "	453-467
" "	XIV "	468-470
" Sculptor	XV "	471
Hans Schülein	fl. 1468-1502	472
Veit Stoss	1440-1533?	473-475
Adam Krafft	1440?-1507	476-482
Tilman Riemenschneider	1460?-1531	483-485
Peter Vischer, the Elder	1455-1520	486-489
Maximilian Monument	XVI century	490-494
Peter Vischer, the Younger?	1487-1528	495, 496
Hans Brüggemann	c. 1470-1528	497, 498
Andreas Schlüter	1664-1714	499, 500

Errata

PLATE

38 . .	Read	1494, for 1495.
48 . .	"	Uffizi, for Hospital S. M. Nuova.
72, 73 .	"	c. 1474, for 1474.
80 . .	"	Schoenhove, for Schvenhove.
85 . .	"	Herri met de Bles, for Herri de Bles.
109 . .	"	Christ and Four Penitents, for The Four Penitents.
135, 253	"	Louvre, for Lourve.
209, 210	"	Honthorst, for Houthorst.
233 . .	"	Dresden, for Cassel.
310, 311	"	Allart van Everdingen, for Allart Everdingen.
349, 350	"	Frans van Mieris, for Frans Mieris.
285 . .	"	Arquebusiers celebrating the Peace of Westphalia, for Schutzenfest.
376 . .	"	Nuremberg, for Nürnberg.
421 . .	"	Royal Museum, for Royal Gallery.
443 . .	"	1500, for d. 1500.
447 . .	"	Crispianus, for Crispianus.

THE UNIVERSITY PRINTS

H. H. POWERS, *Editor-in-Chief*

Ten Series Illustrating the History of Art

- SERIES A. Greek and Roman Sculpture. 500 subjects. Accompanying handbook by Edmund von Mach.
- SERIES B. Early Italian Art. 500 subjects. Accompanying handbook by Mary M. Powers and Louise M. Powe.
- SERIES C. Later Italian Art. 500 subjects. Accompanying handbook by Mary M. Powers and Louise M. Powe.
- SERIES D. Art of the Netherlands and Germany. 500 subjects.
- SERIES E. French and Spanish Art. 250 subjects.
- SERIES F. British Painting. 150 subjects.
- SERIES G. European Architecture. 500 subjects.
Edited by Professors Pope, Chase, and Post.
- SERIES H. American Art. 150 subjects.
- SERIES K. Medieval Art. 140 subjects. Edited by Prof. C. R. Morey.
- SERIES M. Egyptian Art. 25 subjects.

All series of 500 subjects are issued both in loose leaf and bound form.

All other series are issued only in loose leaf form.



THE GHENT ALTARPIECE

HUBERT VAN EYCK, c. 1366 — 1426
 JAN VAN EYCK, c. 1382 — 1440
 EARLY SCHOOL OF THE NETHERLANDS



THE UNIVERSITY PRINTS
 BOSTON



CHRIST ENTHRONED; THE VIRGIN; ST. JOHN: Details, Ghent Altarpiece

S. Bacon, Ghent

HUBERT VAN EYCK. c. 1366—1426

JAN VAN EYCK. c. 1382—1440

EARLY SCHOOL OF THE NETHERLANDS



THE UNIVERSITY PRINTS
BOSTON



SINGING ANGELS: Detail, Ghent Altarpiece
Kaiser Friedrich Museum, Berlin



THE UNIVERSITY PRINTS
 BOSTON

HUBERT VAN EYCK. c. 1366—1426
 JAN VAN EYCK. c. 1382—1440
 EARLY SCHOOL OF THE NETHERLANDS



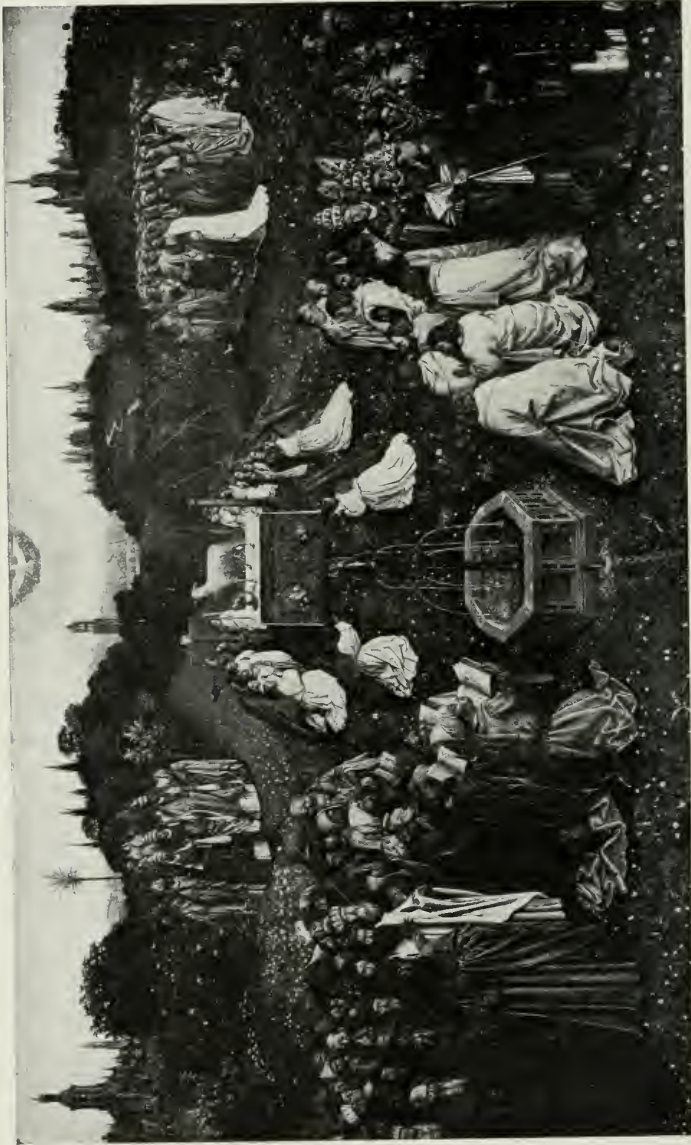
ST. CECILIA: Detail, Ghent Altarpiece
Kaiser Friedrich Museum, Berlin


 THE UNIVERSITY PRINTS
 BOSTON

HUBERT VAN EYCK. c. 1366—1426
 JAN VAN EYCK. c. 1382—1440
 EARLY SCHOOL OF THE NETHERLANDS



ADAM AND EVE: Details, Ghent Altarpiece
Royal Museum, Brussels



ADORATION OF THE LAMB: Detail, Ghent Altarpiece

S. Baxton, Ghent

HUBERT VAN EYCK. c. 1366—1426
JAN VAN EYCK. c. 1382—1440
EARLY SCHOOL OF THE NETHERLANDS



THE UNIVERSITY PRINTS
BOSTON



JUDGES; CHRISTIAN WARRIORS; HERMITS; PILGRIMS: Details, Ghent Altarpiece
Kaiser Friedrich Museum, Berlin



THE UNIVERSITY PRESS
 BOSTON

HUBERT VAN EYCK. c. 1366—1426
 JAN VAN EYCK. c. 1382—1440
 EARLY SCHOOL OF THE NETHERLANDS



ANNUNCIATION: Ghent Altarpiece, Outside of Wings
Kaiser Friedrich Museum, Berlin



THE UNIVERSITY PRINTS
 BOSTON

HUBERT VAN EYCK. c. 1366—1426
 JAN VAN EYCK. c. 1382—1440
 EARLY SCHOOL OF THE NETHERLANDS



JODOCUS AND ISABELLA VYDT: Ghent Altarpiece, Outside of Wings

Kaiser Friedrich Museum, Berlin



THE UNIVERSITY PRINTS
BOSTON

HUBERT VAN EYCK. c. 1366—1426
JAN VAN EYCK. c. 1382—1440
EARLY SCHOOL OF THE NETHERLANDS



THE HOLY WOMEN AT THE SEPULCHRE
Collection of Sir Francis Cook, England

THE UNIVERSITY PRINTS
BOSTON

HUBERT VAN EYCK. c. 1366—1426
EARLY SCHOOL OF THE NETHERLANDS



VIRGIN AND DONOR
Louvre, Paris



THE UNIVERSITY PRINTS
BOSTON

JAN VAN EYCK. c. 1382—1440
EARLY SCHOOL OF THE NETHERLANDS



PORTRAIT OF A MAN WITH PINKS
Kaiser Friedrich Museum, Berlin



THE UNIVERSITY PRINTS
BOSTON

JAN VAN EYCK. c. 1382—1440
EARLY SCHOOL OF THE NETHERLANDS



JEAN ARNOLFINI AND HIS WIFE
National Gallery, London



THE UNIVERSITY PRINTS
BOSTON

JAN VAN EYCK. c. 1382-1440
EARLY SCHOOL OF THE NETHERLANDS



VIRGIN AND CHILD: Triptych, Center Panel
Gallery, Dresden



THE UNIVERSITY PRINTS
BOSTON

JAN VAN EYCK. c. 1382—1440
EARLY SCHOOL OF THE NETHERLANDS



DONOR, WITH ST. MICHAEL AND ST. CATHERINE
Triptych, Inside of Wings
Gallery, Dresden



THE UNIVERSITY PRINTS
BOSTON

JAN VAN EYCK. c. 1382—1440
EARLY SCHOOL OF THE NETHERLANDS



MADONNA WITH ST. DONATIAN AND ST. GEORGE
Academy, Bruges

JAN VAN EYCK. c. 1382—1440
EARLY SCHOOL OF THE NETHERLANDS



THE UNIVERSITY PRINTS
BOSTON



CANON VAN DER PAELE: Detail
Academy, Bruges



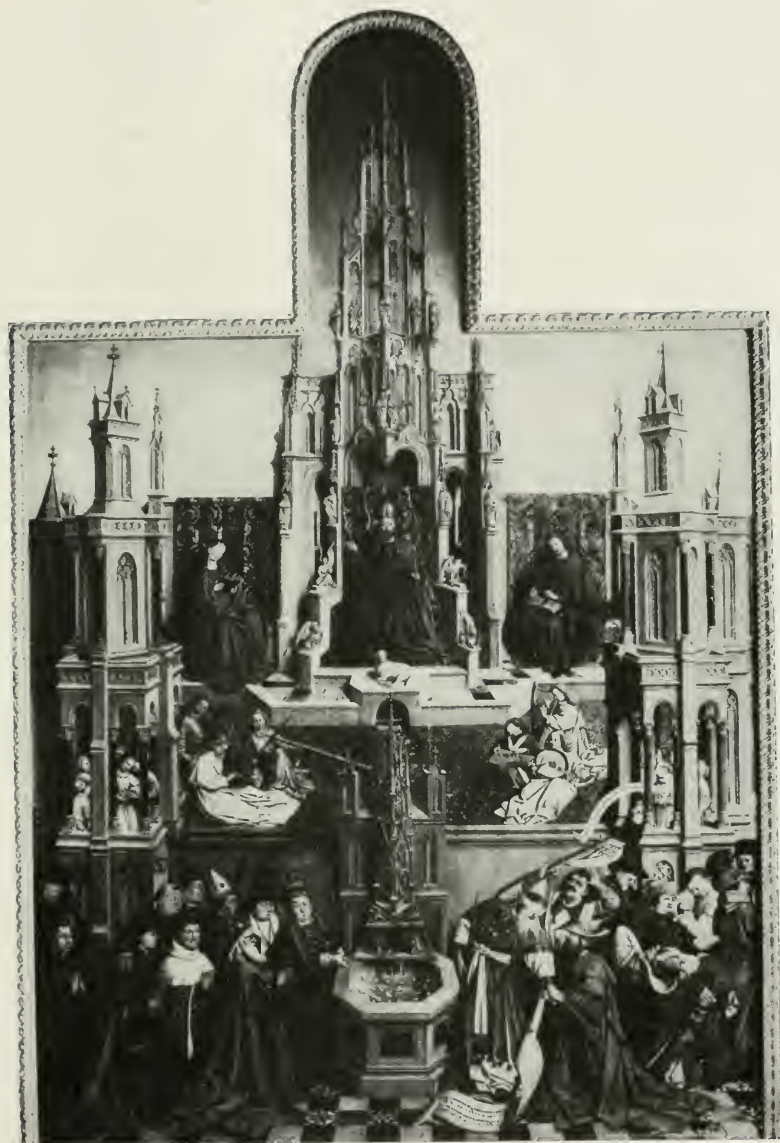
THE UNIVERSITY PRINTS
BOSTON

JAN VAN EYCK. c. 1382—1440
EARLY SCHOOL OF THE NETHERLANDS



ST. BARBARA: Sketch
Museum, Antwerp





TRIUMPH OF THE CHURCH (Copy)

Prado, Madrid



THE UNIVERSITY PRINTS
BOSTON

JAN VAN EYCK. c. 1382—1440
EARLY SCHOOL OF THE NETHERLANDS



ADORATION OF THE MAGI: Triptych, Center Panel

Alte Pinakothek, Munich

ROGER VAN DER WEYDEN. 1400 - 1464
EARLY SCHOOL OF THE NETHERLANDS

ST. COLUMBA ADORATION



THE UNIVERSITY PRINTS
BOSTON



THE ANNUNCIATION : THE PRESENTATION : Wings of Triptych
Alte Pinakothek, Munich



THE UNIVERSITY PRINTS
 BOSTON



ROGER VAN DER WEYDEN. 1400—1464
 EARLY SCHOOL OF THE NETHERLANDS



ALTAR OF CHARLES V : Triptych
Kaiser Friedrich Museum, Berlin

ROGER VAN DER WEYDEN. 1400—1464
EARLY SCHOOL OF THE NETHERLANDS



THE UNIVERSITY PRINTS
BOSTON



BEHEADING OF JOHN THE BAPTIST: Wing of Triptych
Kaiser Friedrich Museum, Berlin



THE UNIVERSITY PRINTS
BOSTON

ROGER VAN DER WEYDEN. 1400-1464
EARLY SCHOOL OF THE NETHERLANDS



DESCENT FROM THE CROSS

Prado, Madrid

ROGIER VAN DER WEYDEN. 1400 — 1464
EARLY SCHOOL OF THE NETHERLANDS



THE UNIVERSITY PRINTS
BOSTON



ST. LUKE PAINTING THE VIRGIN
Louvre, Paris



THE UNIVERSITY PRINTS
BOSTON

ROGER VAN DER WEYDEN. 1400—1464
EARLY SCHOOL OF THE NETHERLANDS



PORTRAITS OF A MAN AND HIS WIFE
National Gallery, London

SCHOOL OF VAN DER WEYDEN
XV. CENTURY



THE UNIVERSITY PRINTS
BOSTON



THE RAISING OF LAZARUS
Kaiser Friedrich Museum, Berlin


THE UNIVERSITY PRINTS
BOSTON

AELBERT VAN OUWATER. fl. 1430—1460
EARLY SCHOOL OF THE NETHERLANDS



MADONNA, WITH SAINTS AND DONOR'S FAMILY

Kaiser Friedrich Museum, Berlin

DUTCH MASTER, c. 1470
EARLY SCHOOL OF THE NETHERLANDS



THE UNIVERSITY PRESS
BOSTON



THE ANNUNCIATION
Prado, Madrid



PORTRAIT OF A LADY OF THE TALBOT FAMILY
Kaiser Friedrich Museum, Berlin



THE UNIVERSITY PRINTS
BOSTON

PETRUS CRISTUS. c. 1400—1473?
EARLY SCHOOL OF THE NETHERLANDS



LEGEND OF ST. ELIGIUS
Oppenheim Collection, Cologne



THE UNIVERSITY PRINTS
BOSTON

PETRUS CRISTUS. c. 1400—1473?
EARLY SCHOOL OF THE NETHERLANDS



THE PASSOVER

Kaiser Friedrich Museum, Berlin



THE UNIVERSITY PRINTS
BOSTON

DIERICK BOUTS. d. 1475
EARLY SCHOOL OF THE NETHERLANDS



THE JUDGMENT OF KING OTHO
Royal Museum, Brussels



THE UNIVERSITY PRINTS
BOSTON

DIERICK BOUTS. d. 1475
EARLY SCHOOL OF THE NETHERLANDS



THE JUDGMENT OF KING OTHO: Detail, Decapitation of the Earl
Royal Museum, Brussels

DIERICK BOUTS. d. 1475
EARLY SCHOOL OF THE NETHERLANDS



THE UNIVERSITY PRINTS
BOSTON



THE LAST SUPPER
Municipal Gallery, Urbino



THE UNIVERSITY PRINTS
BOSTON

JUSTUS OF GHENT. b. 1410?
EARLY SCHOOL OF THE NETHERLANDS



ADORATION OF THE MAGI: Triptych, Center Panel
S. John's Hospital, Bruges

HANS MEMLING. c. 1430—1494
EARLY SCHOOL OF THE NETHERLANDS



THE UNIVERSITY PRINTS
BOSTON



THE NATIVITY: THE PRESENTATION: Triptych, Inside of Wings
S. John's Hospital, Bruges



THE UNIVERSITY PRINTS
BOSTON



HANS MEMLING, c. 1430—1494
EARLY SCHOOL OF THE NETHERLANDS



JOHN THE BAPTIST; ST. VERONICA; Outside of Wings of Triptych
S. *John's Hospital, Bruges*



THE UNIVERSITY PRESS
BOSTON

HANS MEMLING, c. 1430—1495
EARLY SCHOOL OF THE NETHERLANDS



SHRINE OF ST. URSULA
S. John's Hospital, Bruges



THE UNIVERSITY PRINTS
BOSTON

HANS MEMLING. c. 1430—1494
EARLY SCHOOL OF THE NETHERLANDS



THE ARRIVAL AT COLOGNE: Shrine of St. Ursula
S. John's Hospital, Bruges



THE UNIVERSITY PRINTS
BOSTON

HANS MEMLING. c. 1430—1494
EARLY SCHOOL OF THE NETHERLANDS



RETURN TO BASLE: Shrine of St. Ursula
S. John's Hospital, Bruges



THE UNIVERSITY PRINTS
BOSTON

HANS MEMLING. c. 1430—1494
EARLY SCHOOL OF THE NETHERLANDS



MARTYRDOM OF THE SAINT: Shrine of St. Ursula
S. John's Hospital, Bruges



THE UNIVERSITY PRINTS
 BOSTON

HANS MEMLING. c. 1430—1494
 EARLY SCHOOL OF THE NETHERLANDS



PORTRAIT OF MARTIN NIEUWENHOVE: Panel of Diptych
S. John's Hospital, Bruges



THE UNIVERSITY PRINTS
BOSTON

HANS MEMLING. c. 1430—1494
EARLY SCHOOL OF THE NETHERLANDS



MADONNA OF THE GOLDEN APPLE: Panel of Diptych
St. John's Hospital, Bruges



THE UNIVERSITY PRINTS
 BOSTON

HANS MEMLING. c. 1430—1494
 EARLY SCHOOL OF THE NETHERLANDS



MADONNA, WITH ANGEL AND DONOR
Imperial Gallery, Vienna



THE UNIVERSITY PRINTS
BOSTON

HANS MEMLING? c. 1430—1494
EARLY SCHOOL OF THE NETHERLANDS



JOHN THE BAPTIST; ST. JEROME: Panels from Altarpiece
Cathedral, Lübeck



THE UNIVERSITY PRINTS
BOSTON

HANS MEMLING. c. 1430—1494
EARLY SCHOOL OF THE NETHERLANDS



ADORATION OF THE SHEPHERDS : Center Panel, Portinari Altarpiece
Uffizi, Florence



THE UNIVERSITY PRINTS
 BOSTON

HUGO VAN DER GOES. c. 1435-1482
 EARLY SCHOOL OF THE NETHERLANDS



DONORS WITH PATRON SAINTS: Wings of Portinari Altarpiece
Hospital, S. M. Nuova, Florence



THE UNIVERSITY PRINTS
BOSTON

HUGO VAN DER GOES. c. 1435—1482
EARLY SCHOOL OF THE NETHERLANDS



CHRIST BEARING THE CROSS: Triptych. Center Panel
Museum, Antwerp



THE UNIVERSITY PRINTS
BOSTON

GERARD VAN DER MEIRE. 1450?—1512
EARLY SCHOOL OF THE NETHERLANDS



PRESENTATION; CHRIST AMONG THE DOCTORS: Wings of Triptych
Museum, Antwerp



THE UNIVERSITY PRINTS
BOSTON

GERARD VAN DER MEIRE. 1450?—1512
EARLY SCHOOL OF THE NETHERLANDS



THE TEMPTATION OF ST. ANTHONY
Royal Museum, Brussels



THE UNIVERSITY PRINTS
BOSTON

HIERONYMUS VAN AEKEN (BOSCH). 1462?—1516
EARLY SCHOOL OF THE NETHERLANDS



THE MARRIAGE AT CANA
Louvre, Paris

GHEERARDT DAVID. 1450?—1523
EARLY SCHOOL OF THE NETHERLANDS



THE UNIVERSITY PRINTS
BOSTON



THE BAPTISM OF CHRIST: Triptych, Center Panel
Academy, Bruges



THE UNIVERSITY PRINTS
BOSTON

GHEERARDT DAVID. 1450?—1523
EARLY SCHOOL OF THE NETHERLANDS



DONOR AND FIRST WIFE, WITH PATRON SAINTS: Triptych, Inside of Wings
Academy, Bruges



THE UNIVERSITY PRINTS
BOSTON

GHEERARDT DAVID. 1450?—1523
EARLY SCHOOL OF THE NETHERLANDS



VIRGIN AND CHILD

(Triptych, Outside of Wings)

Academy, Bruges



DONOR'S SECOND WIFE.

GHEERARDT DAVID. 1450?—1523
EARLY SCHOOL OF THE NETHERLANDS



THE UNIVERSITY PRINTS
BOSTON



CANON AND PATRON SAINTS
National Gallery, London



THE UNIVERSITY PRINTS
BOSTON

GHEERARDT DAVID. 1450?—1523
EARLY SCHOOL OF THE NETHERLANDS



THE LIFE OF ST. ANNA: Altarpiece, Center Panel
Royal Museum, Brussels



THE UNIVERSITY PRINTS
BOSTON

QUENTIN METSYS. 1466—1530?
EARLY SCHOOL OF THE NETHERLANDS



THE LIFE OF ST. ANNA: Altarpiece, Inside of Wings
Royal Museum, Brussels



THE UNIVERSITY PRINTS
BOSTON

QUENTIN METSYS. 1466—1530?
EARLY SCHOOL OF THE NETHERLANDS



THE LIFE OF ST. ANNA: Altarpiece, Outside of Wings
Royal Museum, Brussels



THE UNIVERSITY PRINTS
BOSTON

QUENTIN METSYS. 1466—1530 ?
EARLY SCHOOL OF THE NETHERLANDS



THE LIFE OF ST. ANNA: Detail of Altarpiece
Royal Museum, Brussels



THE UNIVERSITY PRINTS
BOSTON

QUENTIN METSYS. 1466—1530?
EARLY SCHOOL OF THE NETHERLANDS



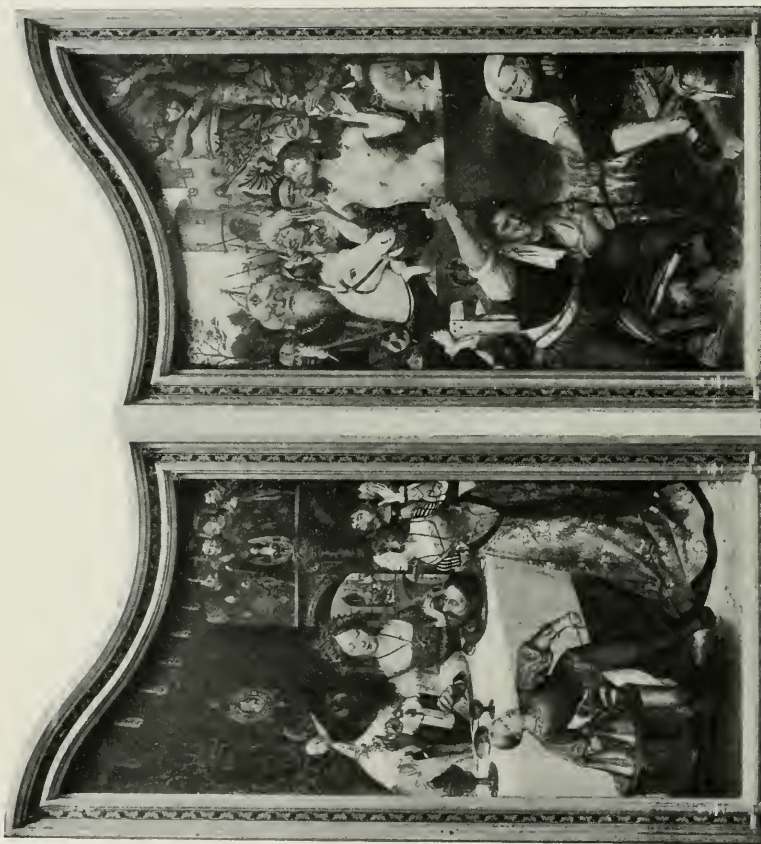
PREPARING CHRIST FOR BURIAL: Triptych, Center Panel

Museum, Antwerp

QUENTIN METSYS. 1466—1530?
EARLY SCHOOL OF THE NETHERLANDS



THE UNIVERSITY PRINTS
BOSTON



MARTYRDOM OF JOHN THE BAPTIST AND OF ST. JOHN THE EVANGELIST

(Wings of Triptych)
Museum, Antwerp

QUENTIN METSYS. 1466—1530?
EARLY SCHOOL OF THE NETHERLANDS



THE UNIVERSITY PRINTS
BOSTON



MADONNA AND CHILD
Kaiser Friedrich Museum, Berlin



THE UNIVERSITY PRINTS
BOSTON

QUENTIN METSYS. 1466—1530?
EARLY SCHOOL OF THE NETHERLANDS



MARY MAGDALEN WITH JAR OF SPIKENARD

Museum, Antwerp



THE UNIVERSITY PRINTS
BOSTON

QUENTIN METSYS. 1466—1530?
EARLY SCHOOL OF THE NETHERLANDS



BANKER AND HIS WIFE
Louvre, Paris


THE UNIVERSITY PRINTS
BOSTON

QUENTIN METSYS. 1466—1530?
EARLY SCHOOL OF THE NETHERLANDS

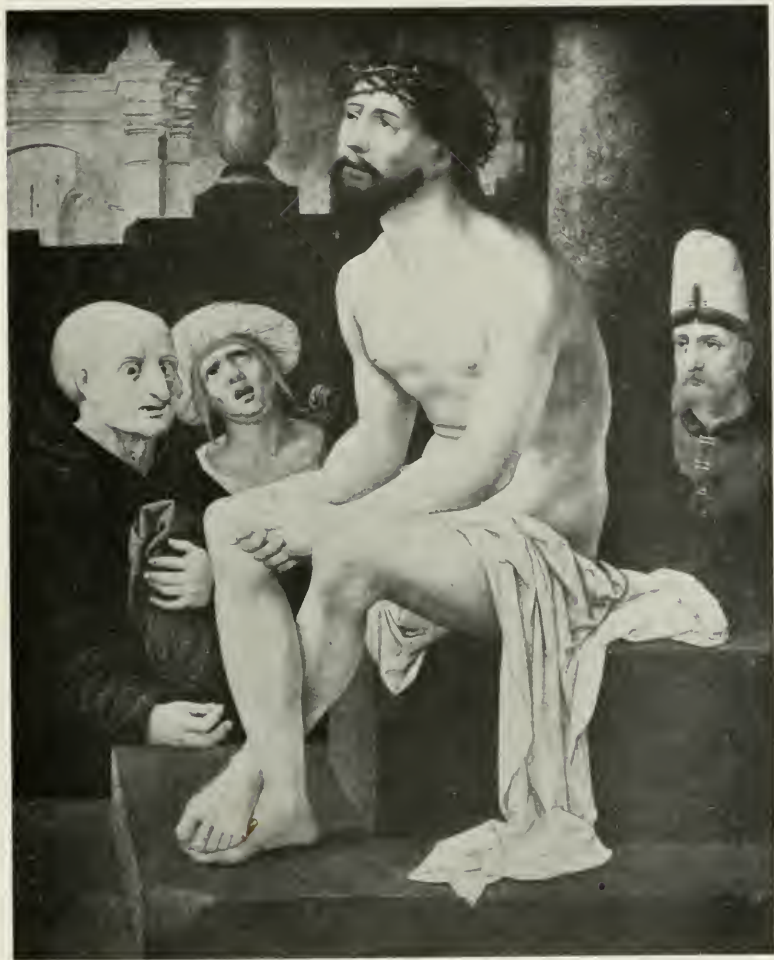


PORTRAIT OF AN UNKNOWN MAN
Liechtenstein, Vienna



THE UNIVERSITY PRINTS
BOSTON

QUENTIN METSYS. 1466—1530 ?
EARLY SCHOOL OF THE NETHERLANDS



ECCE HOMO
Museum, Antwerp



THE UNIVERSITY PRINTS
BOSTON

JAN GOSSAERT (MABUSE). 1470?—1541
SCHOOL OF THE NETHERLANDS



PORTRAIT OF A MAN WITH ROSARY

National Gallery, London



THE UNIVERSITY PRINTS
BOSTON

JAN GOSSAERT (MABUSE). 1470?—1541
SCHOOL OF THE NETHERLANDS



PORTRAIT OF JEAN CARONDELET
Louvre, Paris



THE UNIVERSITY PRINTS
BOSTON

JAN GOSSAERT (MABUSE). 1470?—1541
SCHOOL OF THE NETHERLANDS



MADONNA ENTHRONED: Triptych, Center Panel
Museum, Palermo



THE UNIVERSITY PRINTS
BOSTON

JAN GOSSAERT (MABUSE)? 1470?—1541
SCHOOL OF THE NETHERLANDS



ST. CATHERINE



ST. DOROTHEA

(Wings of Triptych)
 Museum, Palermo



THE UNIVERSITY PRINTS
 BOSTON

JAN GOSSAERT (MABUSE) ? 1470?—1541
 SCHOOL OF THE NETHERLANDS



DEIPARA VIRGO
Museum, Antwerp



THE UNIVERSITY PRINTS
BOSTON

JAN MOSTAERT. 1474—1555
SCHOOL OF THE NETHERLANDS



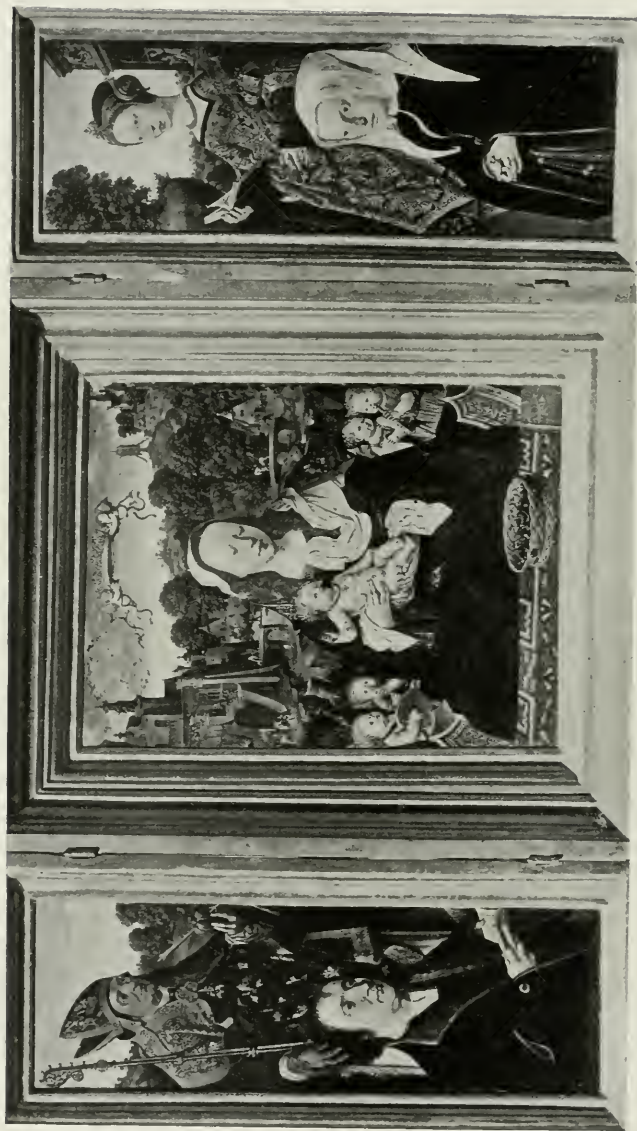
PORTRAIT OF A MAN

Museum, Antwerp



THE UNIVERSITY PRINTS
BOSTON

JAN MOSTAERT. 1474—1555
SCHOOL OF THE NETHERLANDS



MADONNA AND CHILD : SAINTS AND DONORS : Triptych
Kaiser Friedrich Museum, Berlin

THE UNIVERSITY PRINTS
BOSTON

JACOB CORNELISZ VAN OOSTSANEN. 1470? — 1533
SCHOOL OF THE NETHERLANDS



THE CHESS-PLAYERS
Kaiser Friedrich Museum, Berlin

LUCAS VAN LEYDEN. 1494—1533
SCHOOL OF THE NETHERLANDS



THE UNIVERSITY PRINTS
BOSTON



ST. JEROME

Kaiser Friedrich Museum, Berlin

LUCAS VAN LEYDEN. 1494—1533
SCHOOL OF THE NETHERLANDS



THE UNIVERSITY PRINTS
BOSTON



ADORATION OF THE MAGI

Museum, Antwerp

THE UNIVERSITY PRINTS
BOSTON

LUCAS VAN LEYDEN. 1494 — 1533
SCHOOL OF THE NETHERLANDS



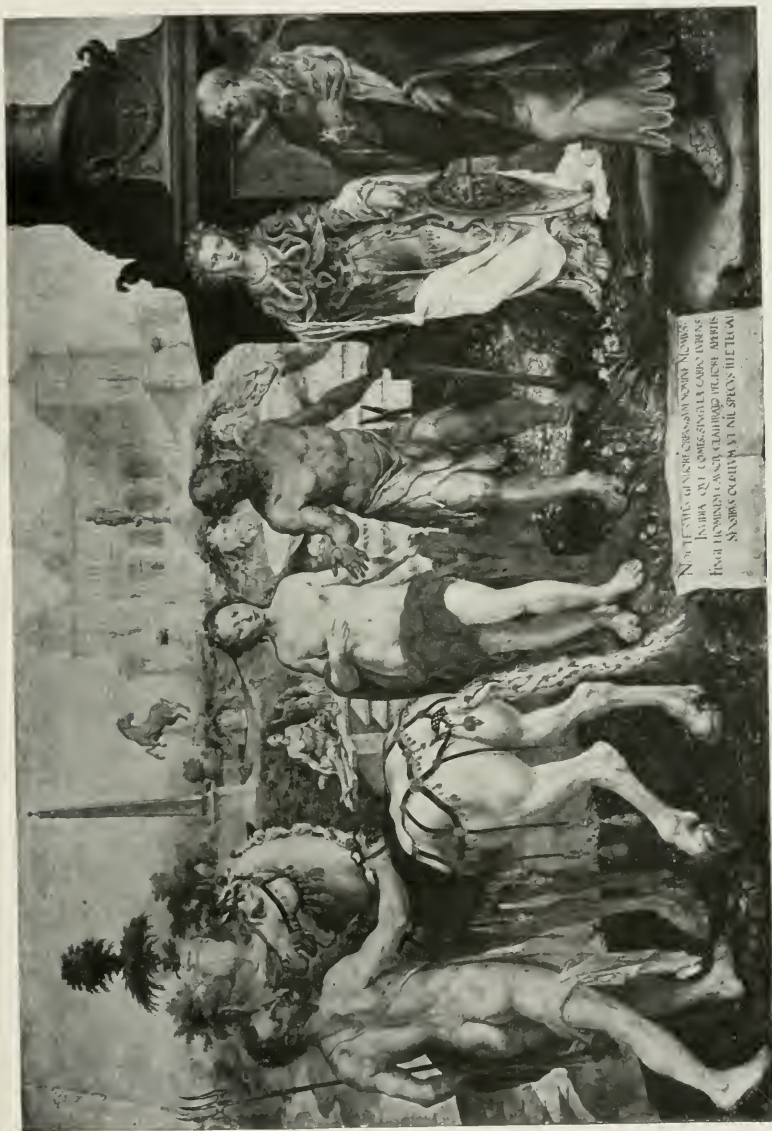
PORTRAIT OF THE ARTIST'S FATHER

Metropolitan Museum, New York



THE UNIVERSITY PRINTS
BOSTON

MARTIN HEEMSKERK. 1498—1574
SCHOOL OF THE NETHERLANDS



MOMUS CRITICISING THE WORKS OF THE GODS

Kaiser Friedrich Museum, Berlin

MARTIN HEEMSKERK. 1494?—1574
SCHOOL OF THE NETHERLANDS



THE UNIVERSITY PRESS
BOSTON



PORTRAIT OF ANNA VON SCHVENHOVE
Kaiser Friedrich Museum, Berlin



THE UNIVERSITY PRINTS
BOSTON

JAN VAN SCOREL. 1495?—1562
SCHOOL OF THE NETHERLANDS



PORTRAIT OF A LADY
National Gallery, London


THE UNIVERSITY PRINTS
BOSTON

JAN VAN SCOREL. 1495?—1562
SCHOOL OF THE NETHERLANDS



DAVID KILLING GOLIATH

Gallery, Dresden



THE UNIVERSITY PRINTS
BOSTON

JAN VAN SCOREL, 1495? — 1562
SCHOOL OF THE NETHERLANDS



THE ROSE IN EGYPT
Royal Museum, Brussels



THE UNIVERSITY PRINTS
BOSTON

JOACHIM PATINIR. d. 1548?
SCHOOL OF THE NETHERLANDS



ESTHER BEFORE AHASUERUS: Triptych, Center Panel
Pinacoteca, Bologna



THE UNIVERSITY PRINTS
 BOSTON

HERRI MET DE BLES (CIVETTA). 1480?—1550?
 SCHOOL OF THE NETHERLANDS



PORTRAIT OF A MAN
Kaiser Friedrich Museum, Berlin



THE UNIVERSITY PRINTS
BOSTON

HERRI DE BLES. 1480?—1550?
SCHOOL OF THE NETHERLANDS



MAGDALEN READING
National Gallery, London



THE UNIVERSITY PRINTS
BOSTON

BERNAERT VAN ORLEY. c. 1490?—1542
SCHOOL OF THE NETHERLANDS



ADORATION OF THE MAGI
Museum, Antwerp



THE UNIVERSITY PRINTS
BOSTON

BERNAERT VAN ORLEY. c. 1490—1542
SCHOOL OF THE NETHERLANDS



THE TRIALS OF JOB: Detail
Museum, Brussels



THE UNIVERSITY PRINTS
BOSTON

BERNAERT VAN ORLEY. c. 1490—1542
SCHOOL OF THE NETHERLANDS



TWO CLERICS

Kaiser Friedrich Museum, Berlin

ANTONIS MOR. 1512?—1581
SCHOOL OF THE NETHERLANDS



THE UNIVERSITY PRINTS
BOSTON



PORTRAIT OF QUEEN MARY OF ENGLAND
Prado, Madrid



THE UNIVERSITY PRINTS
BOSTON

ANTONIS MOR. 1512?—1581
SCHOOL OF THE NETHERLANDS

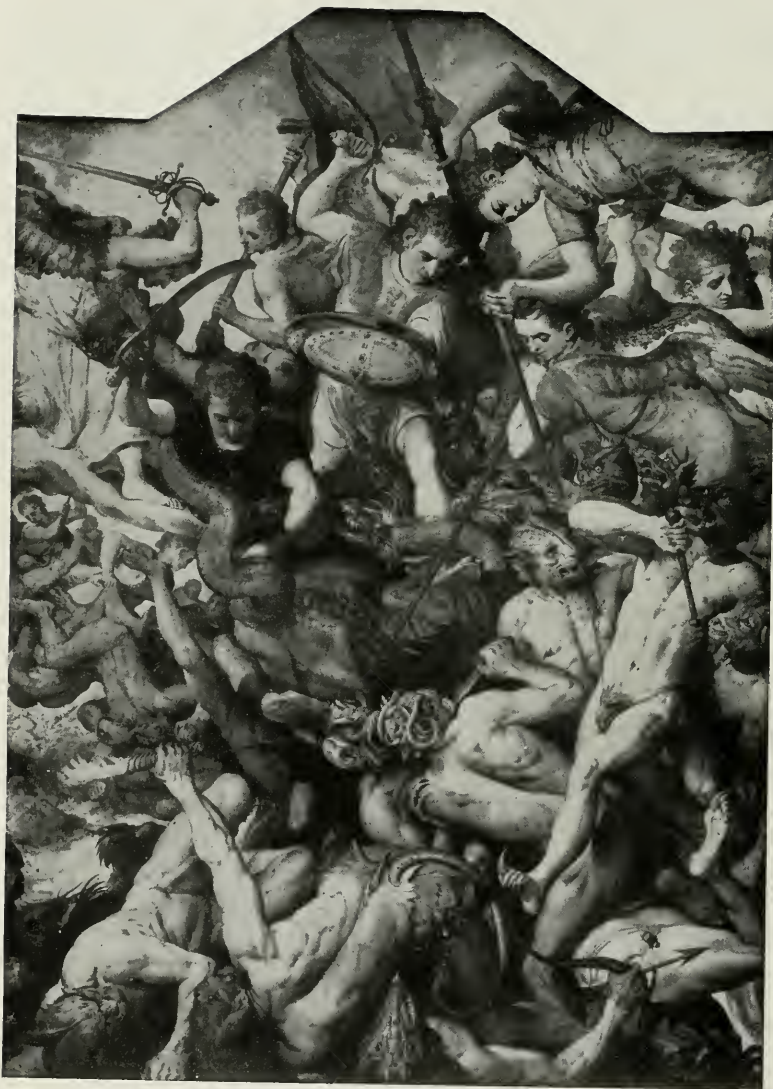


PORTRAIT OF A MAN
Gallery, Dresden



THE UNIVERSITY PRINTS
BOSTON

ANTONIS MOR. 1512?—1581
SCHOOL OF THE NETHERLANDS



THE FALL OF THE ANGELS
Museum, Antwerp



THE UNIVERSITY PRINTS
BOSTON

FRANS FLORIS. 1518?—1570
SCHOOL OF THE NETHERLANDS



A PEASANT WEDDING
Imperial Gallery, Vienna

PIETER BRUEGHEL, THE ELDER. 1530? — 1569
SCHOOL OF THE NETHERLANDS



THE UNIVERSITY PRINTS
BOSTON



PARABLE OF THE BLIND MEN
Louvre, Paris

THE UNIVERSITY PRINTS
BOSTON

PIETER BRUEGHEL, THE ELDER. 1530? — 1569
SCHOOL OF THE NETHERLANDS



TEMPTATION OF ST. ANTHONY: Detail
Museum, Antwerp



THE UNIVERSITY PRINTS
BOSTON

MARTIN DE VOS, 1532—1603
SCHOOL OF THE NETHERLANDS



LADY AND DOG
Gallery, Dresden



THE UNIVERSITY PRINTS
BOSTON

FRANS POURBUS, THE ELDER, 1545—1580
SCHOOL OF THE NETHERLANDS



WINTER LANDSCAPE
Imperial Gallery, Vienna

PIETER BRUEGHEL, THE YOUNGER. 1564?—1638
SCHOOL OF THE NETHERLANDS



THE UNIVERSITY PRINTS
BOSTON



ADORATION OF THE MAGI
Imperial Gallery, Vienna

JAN BRUEGHEL. 1568--1625
LATE FLEMISH SCHOOL



THE UNIVERSITY PRINTS
BOSTON



LEGEND OF ST. HUBERT
Kaiser Friedrich Museum, Berlin

JAN BRUEGHEL, 1568—1625
LATE FLEMISH SCHOOL



THE UNIVERSITY PRINTS
BOSTON



MARIE DE MEDICIS: Detail
Louvre, Paris



THE UNIVERSITY PRINTS
BOSTON

FRANS POURBUS, THE YOUNGER. 1570—1622
LATE FLEMISH SCHOOL



CROWNING THE HERO OF VIRTUE
Gallery, Dresden

PETER PAUL RUBENS. 1577 — 1640
LATE FLEMISH SCHOOL



THE UNIVERSITY PRINTS
BOSTON



THE FOUR PHILOSOPHERS
Pitti, Florence



THE UNIVERSITY PRINTS
BOSTON

PETER PAUL RUBENS. 1577—1640
LATE FLEMISH SCHOOL



ST. SEBASTIAN

Kaiser Friedrich Museum, Berlin



THE UNIVERSITY PRINTS
BOSTON

PETER PAUL RUBENS, 1577—1640
LATE FLEMISH SCHOOL



RUBENS AND ISABELLA BRANDT
Alte Pinakothek, Munich



THE UNIVERSITY PRINTS
BOSTON

PETER PAUL RUBENS. 1577—1640
LATE FLEMISH SCHOOL



THE LAST SUPPER
Brera, Milan



THE UNIVERSITY PRINTS
BOSTON

PETER PAUL RUBENS. 1577—1640
LATE FLEMISH SCHOOL



DESCENT FROM THE CROSS: Triptych, Center Panel
Cathedral, Antwerp



THE UNIVERSITY PRINTS
BOSTON

PETER PAUL RUBENS. 1577—1640
LATE FLEMISH SCHOOL



THE VISITATION; THE PRESENTATION: Wings of Triptych
Cathedral, Antwerp



THE UNIVERSITY PRINTS
BOSTON

PETER PAUL RUBENS. 1577—1640
LATE FLEMISH SCHOOL



MADONNA OF THE PARROT
Museum, Antwerp

THE UNIVERSITY PRINTS
BOSTON

PETER PAUL RUBENS. 1577 — 1640
LATE FLEMISH SCHOOL



THE FOUR PENITENTS
Museum, Antwerp



THE UNIVERSITY PRINTS
BOSTON

PETER PAUL RUBENS. 1577—1640
LATE FLEMISH SCHOOL



PORTRAIT OF DR. VAN TULDEN
Alte Pinakothek, Munich



THE UNIVERSITY PRINTS
BOSTON

PETER PAUL RUBENS. 1577—1640
LATE FLEMISH SCHOOL



THE GREAT LAST JUDGMENT
Alte Pinakothek, Munich



THE LION HUNT
Alte Pinakothek, Munich

THE UNIVERSITY PRINTS
BOSTON

PETER PAUL RUBENS, 1577 — 1640
LATE FLEMISH SCHOOL



PERSEUS AND ANDROMEDA
Kaiser Friedrich Museum, Berlin

PETER PAUL RUBENS. 1577-1640
LATE FLEMISH SCHOOL



THE UNIVERSITY PRINTS
BOSTON



THE CHILD JESUS, WITH ST. JOHN AND ANGELS
Imperial Gallery, Vienna

THE UNIVERSITY PRINTS
BOSTON

PETER PAUL RUBENS. 1577—1640
LATE FLEMISH SCHOOL



SATYR AND TIGRESS
Gallery, Dresden



THE UNIVERSITY PRINTS
BOSTON

PETER PAUL RUBENS. 1577—1640
LATE FLEMISH SCHOOL



VIRGIN AND CHILD; CHRIST À LA PAILLE; ST. JOHN THE EVANGELIST: Triptych
Museum, Antwerp

THE UNIVERSITY PRINTS
BOSTON

PETER PAUL RUBENS. 1577—1640
LATE FLEMISH SCHOOL



ST. AMBROSE AND THE EMPEROR THEODOSIUS

Imperial Gallery, Vienna



THE UNIVERSITY PRINTS
BOSTON

PETER PAUL RUBENS. 1577—1640
LATE FLEMISH SCHOOL



CHRIST BETWEEN TWO THIEVES (COUP DE LANCE)
Museum, Antwerp



THE UNIVERSITY PRINTS
BOSTON

PETER PAUL RUBENS. 1577—1640
LATE FLEMISH SCHOOL



PORTRAIT OF RUBENS
Uffizi, Florence



THE UNIVERSITY PRINTS
BOSTON

PETER PAUL RUBENS. 1577—1640
LATE FLEMISH SCHOOL



THE FUR HAT
National Gallery, London



THE UNIVERSITY PRINTS
BOSTON

PETER PAUL RUBENS. 1577—1640
LATE FLEMISH SCHOOL



HENRI IV RECEIVING THE PORTRAIT OF MARIE DE MEDICIS
Louvre, Paris



THE UNIVERSITY PRINTS
BOSTON

PETER PAUL RUBENS. 1577—1640
LATE FLEMISH SCHOOL



ARRIVAL OF MARIE DE MEDICIS AT MARSEILLES

Louvre, Paris



THE UNIVERSITY PRINTS
BOSTON

PETER PAUL RUBENS. 1577—1640
LATE FLEMISH SCHOOL



RECONCILIATION OF MARIE DE MEDICIS WITH HER SON

Louvre, Paris



THE UNIVERSITY PRINTS
BOSTON

PETER PAUL RUBENS. 1577—1640
LATE FLEMISH SCHOOL



ADORATION OF THE MAGI
Museum, Antwerp



THE UNIVERSITY PRINTS
BOSTON

PETER PAUL RUBENS. 1577—1640
LATE FLEMISH SCHOOL



LADY OF THE BOONEN FAMILY (SUSANNE FOURMENT)

Louvre, Paris



THE UNIVERSITY PRINTS
BOSTON

PETER PAUL RUBENS. 1577—1640
LATE FLEMISH SCHOOL



THE MARRIAGE OF ST. CATHERINE
S. Augustin, Antwerp



THE UNIVERSITY PRINTS
BOSTON

PETER PAUL RUBENS. 1577—1640
LATE FLEMISH SCHOOL



MIRACLE OF ST. ILDEFONSO: Triptych, Center Panel
Imperial Gallery, Vienna



THE UNIVERSITY PRINTS
BOSTON

PETER PAUL RUBENS. 1577—1640
LATE FLEMISH SCHOOL



DONORS AND THEIR PATRON SAINTS: Triptych, Inside of Wings
Imperial Gallery, Vienna



THE UNIVERSITY PRINTS
BOSTON

PETER PAUL RUBENS. 1577—1640
LATE FLEMISH SCHOOL



THE HOLY FAMILY UNDER AN APPLE-TREE: Triptych, Outside of Wings
Imperial Gallery, Vienna



THE UNIVERSITY PRINTS
BOSTON

PETER PAUL RUBENS, 1577—1640
LATE FLEMISH SCHOOL



PORTRAIT OF AN OLD BISHOP
Gallery, Dresden



THE UNIVERSITY PRINTS
BOSTON

PETER PAUL RUBENS. 1577—1640
LATE FLEMISH SCHOOL



QUOS EGO!
Gallery, Dresden

THE UNIVERSITY PRINTS
BOSTON



PETER PAUL RUBENS. 1577 — 1640
LATE FLEMISH SCHOOL



LA RONDA
Prado, Madrid

PETER PAUL RUBENS. 1577—1640
LATE FLEMISH SCHOOL



THE UNIVERSITY PRESS
BOSTON



THE JUDGMENT OF PARIS
National Gallery, London

PETER PAUL RUBENS. 1577—1640
LATE FLEMISH SCHOOL



THE UNIVERSITY PRESS
BOSTON



HELENA FOURMENT AND SON
Alte Pinakothek, Munich



THE UNIVERSITY PRINTS
BOSTON

PETER PAUL RUBENS. 1577—1640
LATE FLEMISH SCHOOL

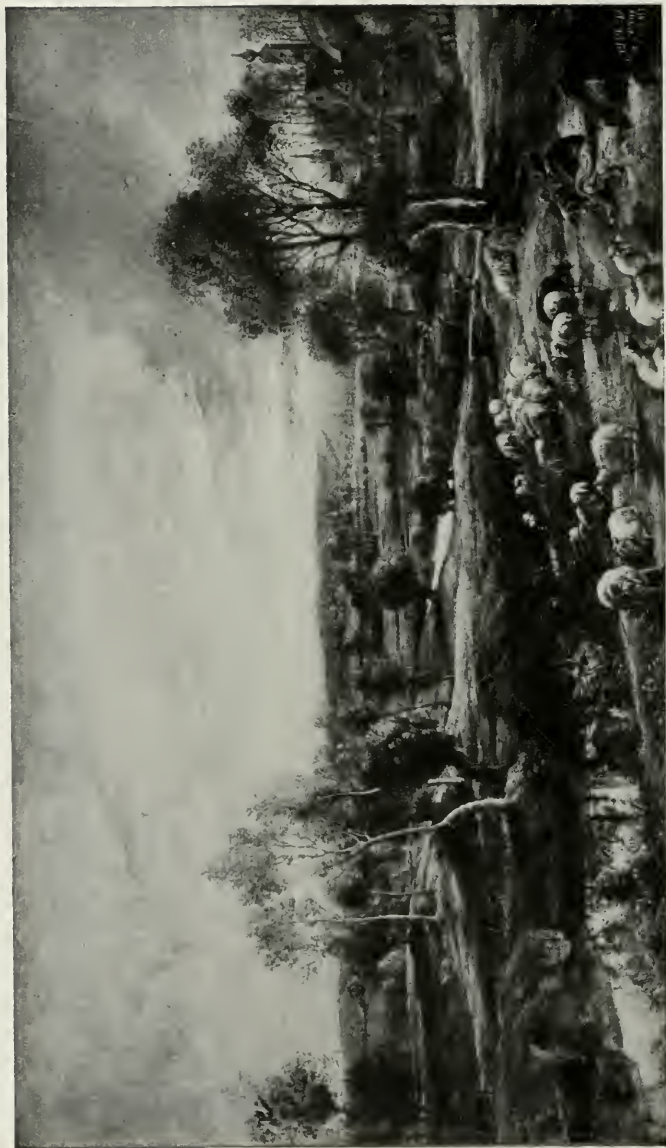


LA KERMESE
Louvre, Paris

PETER PAUL RUBENS. 1577 — 1640
LATE FLEMISH SCHOOL



THE UNIVERSITY PRINTS
BOSTON



THE CASTLE OF STEEN
National Gallery, London

PETER PAUL RUBENS, 1577—1640
LATE FLEMISH SCHOOL



THE UNIVERSITY PRINTS
BOSTON



MERCURY AND ARGUS
Royal Museum, Brussels

PETER PAUL RUBENS, 1577—1640
LATE FLEMISH SCHOOL



THE UNIVERSITY PRESS
BOSTON



PORTRAIT OF RUBENS (1637—39)
Imperial Gallery, Vienna



THE UNIVERSITY PRINTS
BOSTON

PETER PAUL RUBENS. 1577—1640
LATE FLEMISH SCHOOL



PORTRAIT OF HELENA FOURMENT
Hermitage, St. Petersburg



THE UNIVERSITY PRINTS
BOSTON

PETER PAUL RUBENS. 1577—1640
LATE FLEMISH SCHOOL



HELENA FOURMENT AS ST. CECILIA
Kaiser Friedrich Museum, Berlin



THE UNIVERSITY PRINTS
BOSTON

PETER PAUL RUBENS. 1577—1640
LATE FLEMISH SCHOOL



THE STAG HUNT

Kaiser Friedrich Museum, Berlin

PETER PAUL RUBENS. 1577 -- 1640
FRANS SNYDERS. 1579 -- 1657
LATE FLEMISH SCHOOL



THE UNIVERSITY PRINTS
BOSTON



THE BOAR HUNT
Kaiser Friedrich Museum, Berlin

FRANS SNYDERS. 1579—1657
LATE FLEMISH SCHOOL



THE UNIVERSITY PRINTS
BOSTON



LIONESS ATTACKING BOAR

Alte Pinakothek, Munich

FRANS SNYDERS, 1579—1657
LATE FLEMISH SCHOOL



THE UNIVERSITY PRINTS
BOSTON



DOGS IN THE KITCHEN
Louvre, Paris

FRANS SNYDERS, 1579 — 1657
LATE FLEMISH SCHOOL



THE UNIVERSITY PRINTS
BOSTON



A DUTCH KITCHEN
Metropolitan Museum, New York

DAVID TENIERS, THE ELDER. 1582—1649
LATE FLEMISH SCHOOL



THE UNIVERSITY PRINTS
BOSTON



ADORATION OF THE SHEPHERDS
Royal Museum, Brussels



THE UNIVERSITY PRINTS
BOSTON

GASPARD DE CRAEYER. 1584—1669
LATE FLEMISH SCHOOL



ST. AUGUSTINE IN ECSTASY
Louvre, Paris



THE UNIVERSITY PRINTS
BOSTON

GASPARD DE CRAEYER. 1584—1669
LATE FLEMISH SCHOOL



FAMILY OF THE ARTIST
Royal Museum, Brussels



THE UNIVERSITY PRINTS
BOSTON

CORNELIS DE VOS. 1585—1651
LATE FLEMISH SCHOOL



THE CONCERT
Louvre, Paris



THE UNIVERSITY PRESS
BOSTON

JACOB JORDAENS. 1593—1678
LATE FLEMISH SCHOOL



THE FOUR EVANGELISTS
Louvre, Paris


THE UNIVERSITY PRINTS
BOSTON

JACOB JORDAENS. 1593—1678
LATE FLEMISH SCHOOL



ATALANTA AND MELEAGER
Prado, Madrid

THE UNIVERSITY PRINTS
BOSTON

JACOB JORDAENS, 1593—1678
LATE FLEMISH SCHOOL



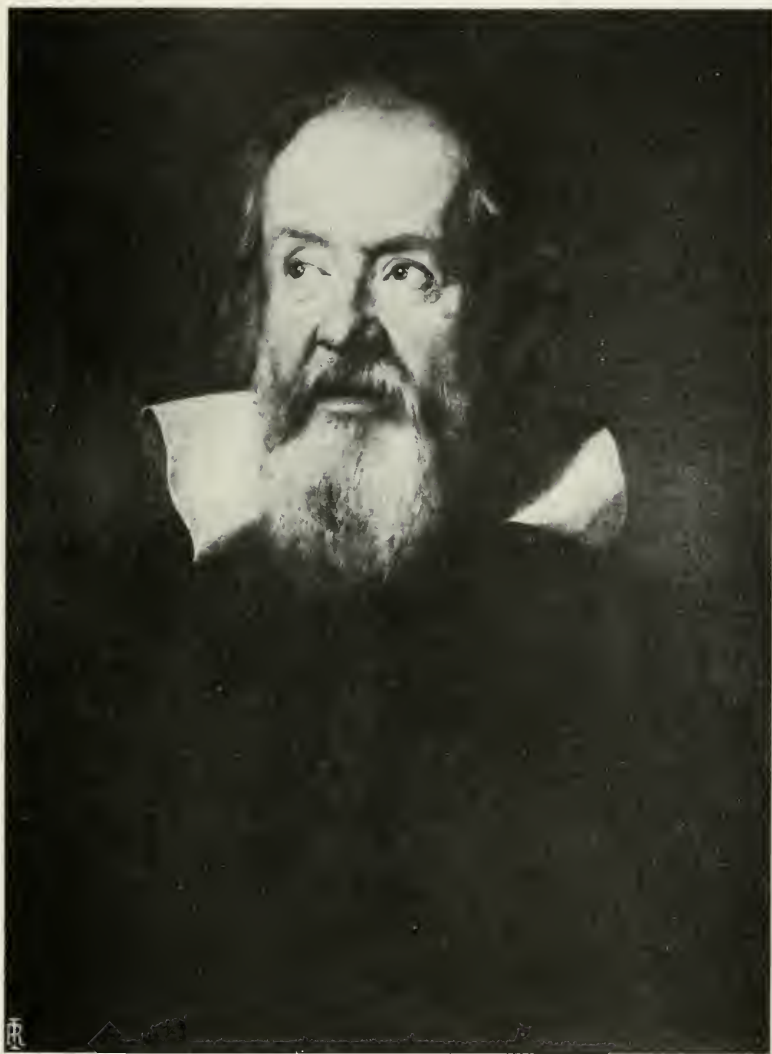
PORTRAIT OF ADMIRAL DE RUYTER

Louvre, Paris



THE UNIVERSITY PRINTS
BOSTON

JACOB JORDAENS. 1593—1678
LATE FLEMISH SCHOOL



PORTRAIT OF GALILEO
Uffizi, Florence



THE UNIVERSITY PRINTS
BOSTON

JUSTUS SUSTERMANS, 1597—1681
LATE FLEMISH SCHOOL



PORTRAIT OF THE SON OF FREDERICK III.
Pitti, Florence



THE UNIVERSITY PRINTS
BOSTON

JUSTUS SUSTERMANS. 1597—1681
LATE FLEMISH SCHOOL



CHRIST CROWNED WITH THORNS

Kaiser Friedrich Museum, Berlin



THE UNIVERSITY PRINTS
BOSTON

ANTHONY VAN DYCK, 1599—1641
LATE FLEMISH SCHOOL



ST. SEBASTIAN
Alte Pinakothek, Munich



THE UNIVERSITY PRINTS
BOSTON

ANTHONY VAN DYCK. 1599—1641
LATE FLEMISH SCHOOL



PORTRAIT OF THOMAS DE CARIGNAN
Kaiser Friedrich Museum, Berlin



THE UNIVERSITY PRINTS
BOSTON

ANTHONY VAN DYCK. 1599—1641
LATE FLEMISH SCHOOL



PORTRAIT OF A LADY
Kaiser Friedrich Museum, Berlin



THE UNIVERSITY PRINTS
BOSTON

ANTHONY VAN DYCK. 1599—1641
LATE FLEMISH SCHOOL



AN ITALIAN NOBLEMAN
Wallace Collection, London



THE UNIVERSITY PRINTS
BOSTON

ANTHONY VAN DYCK. 1599—1641
LATE FLEMISH SCHOOL



PORTRAIT OF CARDINAL BENTIVOGLIO
Pitti, Florence



THE UNIVERSITY PRINTS
BOSTON

ANTHONY VAN DYCK. 1599—1641
LATE FLEMISH SCHOOL



THE BETRAYAL OF JESUS
Prado, Madrid



THE UNIVERSITY PRINTS
BOSTON

ANTHONY VAN DYCK. 1599—1641
LATE FLEMISH SCHOOL



THE REPOSE IN EGYPT

Alte Pinakothek, Munich



THE UNIVERSITY PRINTS
BOSTON

ANTHONY VAN DYCK. 1599—1641
LATE FLEMISH SCHOOL



THE VIRGIN AND CHILD, WITH DONORS
Louvre, Paris



THE UNIVERSITY PRINTS
BOSTON

ANTHONY VAN DYCK. 1599—1641
LATE FLEMISH SCHOOL



HERR VAN LEER AND FAMILY
Gallery, Casse



THE UNIVERSITY PRINTS
BOSTON

ANTHONY VAN DYCK. 1599—1641
LATE FLEMISH SCHOOL



PORTRAIT OF ANNA WAKE
Mauritshuis, The Hague



THE UNIVERSITY PRINTS
BOSTON

ANTHONY VAN DYCK. 1599—1641
LATE FLEMISH SCHOOL



PORTRAIT OF MARIA LOUISA DE TASSIS
Liechtenstein, Vienna



THE UNIVERSITY PRINTS
BOSTON

ANTHONY VAN DYCK. 1599—1641
LATE FLEMISH SCHOOL



PORTRAIT OF CORNELIUS 'VAN DER GEEST' ?

National Gallery, London



THE UNIVERSITY PRINTS
BOSTON

ANTHONY VAN DYCK. 1599—1641
LATE FLEMISH SCHOOL



RICHARDOT AND HIS SON
Louvre, Paris



THE UNIVERSITY PRINTS
BOSTON

ANTHONY VAN DYCK. 1599—1641
LATE FLEMISH SCHOOL



A LADY AND HER DAUGHTER
Louvre, Paris



THE UNIVERSITY PRINTS
BOSTON

ANTHONY VAN DYCK. 1599—1641
LATE FLEMISH SCHOOL



THE BEWAILING
Museum, Antwerp

ANTHONY VAN DYCK. 1599—1641
LATE FLEMISH SCHOOL



THE UNIVERSITY PRINTS
BOSTON



CHRIST ON THE CROSS
Museum, Antwerp



THE UNIVERSITY PRINTS
BOSTON

ANTHONY VAN DYCK. 1599—1644
LATE FLEMISH SCHOOL



PORTRAIT OF VAN DYCK
Uffizi, Florence



THE UNIVERSITY PRINTS
BOSTON

ANTHONY VAN DYCK. 1599—1641
LATE FLEMISH SCHOOL



ENDYMION PORTER AND VAN DYCK
Prado, Madrid

ANTHONY VAN DYCK. 1599—1641
LATE FLEMISH SCHOOL



THE UNIVERSITY PRINTS
BOSTON



PORTRAIT OF DAVID RYCKAERT
Prado, Madrid



THE UNIVERSITY PRINTS
BOSTON

ANTHONY VAN DYCK. 1599—1641
LATE FLEMISH SCHOOL



PORTRAIT OF CHARLES I. OF ENGLAND

Louvre, Paris



THE UNIVERSITY PRINTS
BOSTON

ANTHONY VAN DYCK. 1599—1641
LATE FLEMISH SCHOOL



CHILDREN OF CHARLES I.
Gallery, Dresden

ANTHONY VAN DYCK. 1599 — 1641
LATE FLEMISH SCHOOL



THE UNIVERSITY PRINTS
BOSTON



PORTRAIT OF THE DUKE OF RICHMOND
Metropolitan Museum, New York



THE UNIVERSITY PRINTS
BOSTON

ANTHONY VAN DYCK. 1599—1641
LATE FLEMISH SCHOOL



PORTRAIT OF PRINCE RUPERT
Imperial Gallery, Vienna



THE UNIVERSITY PRINTS
BOSTON

ANTHONY VAN DYCK. 1599—1641
LATE FLEMISH SCHOOL



MARY RUTHVEN, THE WIFE OF VAN DYCK
Alte Pinakothek, Munich



THE UNIVERSITY PRINTS
BOSTON

ANTHONY VAN DYCK. 1599—1641
LATE FLEMISH SCHOOL



PORTRAIT OF SIMON DE VOS

Museum, Antwerp



THE UNIVERSITY PRINTS
BOSTON

SIMON DE VOS. 1603—1676
LATE FLEMISH SCHOOL



PETER'S DENIAL
Louvre, Paris

THE UNIVERSITY PRINTS
BOSTON

DAVID TENIERS, THE YOUNGER. 1610—1690
LATE FLEMISH SCHOOL



THE TEMPTATION OF ST. ANTHONY

Kaiser Friedrich Museum, Berlin

DAVID TENIERS, THE YOUNGER. 1610—1690
LATE FLEMISH SCHOOL



THE UNIVERSITY PRINTS
BOSTON



THE SEASONS : AUTUMN : WINTER
National Gallery, London



THE UNIVERSITY PRINTS
BOSTON



DAVID TENIERS, THE YOUNGER, 1610—1690
LATE FLEMISH SCHOOL



THE BAGPIPE-PLAYER
Louvre, Paris



THE UNIVERSITY PRINTS
BOSTON

DAVID TENIERS, THE YOUNGER. 1610—1690
LATE FLEMISH SCHOOL



THE SMOKER
Louvre, Paris



THE UNIVERSITY PRINTS
BOSTON

DAVID TENIERS, THE YOUNGER. 1610—1690
LATE FLEMISH SCHOOL



VILLAGE FESTIVAL
Royal Museum, Brussels

DAVID TENIERS, THE YOUNGER. 1610 — 1690
LATE FLEMISH SCHOOL



THE UNIVERSITY PRINTS
BOSTON



THE SACRIFICE OF ABRAHAM
Imperial Gallery, Vienna



THE UNIVERSITY PRINTS
BOSTON

DAVID TENIERS, THE YOUNGER. 1610—1690
LATE FLEMISH SCHOOL



THE DUCHESS OF RICHMOND
Hampton Court



THE UNIVERSITY PRINTS
BOSTON

SIR PETER LELY. 1618—1680
LATE FLEMISH SCHOOL



PORTRAIT OF CROMWELL
Pitti, Florence



THE UNIVERSITY PRINTS
BOSTON

SIR PETER LELY. 1618—1680
LATE FLEMISH SCHOOL



PORTRAIT OF A LADY
Prado, Madrid



THE UNIVERSITY PRINTS
BOSTON

MICHEL VAN MIERVELD. 1567—1641
DUTCH SCHOOL



PORTRAIT OF A LADY
Metropolitan Museum, New York



THE UNIVERSITY PRINTS
BOSTON

MICHIEL VAN MIERVELD, 1567—1641
DUTCH SCHOOL



OFFICERS OF THE GUILD OF ST. SEBASTIAN
Municipal Museum, The Hague



THE UNIVERSITY PRINTS
BOSTON

JAN RAVESTEYN. 1572?—1657
DUTCH SCHOOL



BANQUET OF ST. GEORGE'S COMPANY
Town Hall, Haarlem

FRANS HALS. 1580?—1666
DUTCH SCHOOL



THE UNIVERSITY PRINTS
BOSTON



THE LAUGHING CAVALIER

Wallace Collection, London



THE UNIVERSITY PRINTS
BOSTON

FRANS HALS. 1580?—1666
DUTCH SCHOOL



PORTRAIT OF OLYCAN
Mauritshuis, The Hague



THE UNIVERSITY PRINTS
BOSTON

FRANS HALS. 1580?—1666
DUTCH SCHOOL



PORTRAIT OF A MAN
Kaiser Friedrich Museum, Berlin



THE UNIVERSITY PRINTS
BOSTON

FRANS HALS. 1580?—1666
DUTCH SCHOOL



PORTRAIT OF A LADY
Kaiser Friedrich Museum, Berlin



THE UNIVERSITY PRINTS
BOSTON

FRANS HALS. 1580?—1666
DUTCH SCHOOL



HALS AND HIS WIFE
Ryks Museum, Amsterdam

FRANS HALS. 1580?—1666
DUTCH SCHOOL



THE UNIVERSITY PRINTS
BOSTON



BANQUET OF ST. ANDREW'S COMPANY
Town Hall, Haarlem



THE UNIVERSITY PRINTS
BOSTON

FRANS HALS. 1580?—1666
DUTCH SCHOOL



THE FOOL WITH A LUTE (Copy)
Ryks Museum, Amsterdam



THE UNIVERSITY PRINTS
BOSTON

FRANS HALS. 1580?—1666
DUTCH SCHOOL



LA BOHÉMIENNE
Louvre, Paris



THE UNIVERSITY PRINTS
BOSTON

FRANS HALS. 1580?—1666
DUTCH SCHOOL



NURSE AND CHILD

Kaiser Friedrich Museum, Berlin



THE UNIVERSITY PRINTS
BOSTON

FRANS HALS. 1580?—1666
DUTCH SCHOOL



PORTRAIT OF A WOMAN
Metropolitan Museum, New York



THE UNIVERSITY PRINTS
BOSTON

FRANS HALS. 1580?—1666
DUTCH SCHOOL



OFFICERS OF ST. ANDREW'S COMPANY
Town Hall, Haarlem

FRANS HALS. 1580?—1666
DUTCH SCHOOL



THE UNIVERSITY PRINTS
BOSTON



OFFICERS OF ST. ANDREW'S COMPANY: Detail
Town Hall, Haarlem



THE UNIVERSITY PRINTS
BOSTON

FRANS HALS. 1580?—1666
DUTCH SCHOOL



WOMAN WITH PARROT: HILLE BOBBE
Kaiser Friedrich Museum, Berlin



THE UNIVERSITY PRINTS
BOSTON

FRANS HALS. 1580?—1666
DUTCH SCHOOL



PORTRAIT OF A MAN
National Gallery, London



THE UNIVERSITY PRINTS
BOSTON

FRANS HALS. 1580?—1666
DUTCH SCHOOL



DIRECTRESSES OF THE ALMSHOUSE
Town Hall, Haarlem



THE UNIVERSITY PRINTS
BOSTON

FRANS HALS. 1580 ? — 1666
DUTCH SCHOOL



ADORATION OF THE SHEPHERDS
Uffizi, Florence

GERARD HOUTHORST. 1590—1656
DUTCH SCHOOL



THE UNIVERSITY PRINTS
BOSTON



CIMON AND PERA
Alte Pinakothek, Munich

GERARD HOUTHORST. 1590—1656
DUTCH SCHOOL



THE UNIVERSITY PRINTS
BOSTON



ANATOMY LESSON

Rijks Museum, Amsterdam

THOMAS DE KEYSER, 1596 — 1679
DUTCH SCHOOL



THE UNIVERSITY PRINTS
BOSTON



PORTRAIT OF A SAVANT
Mauritshuis, The Hague



THE UNIVERSITY PRINTS
BOSTON

THOMAS DE KEYSER. 1596—1679
DUTCH SCHOOL



VIEW OF NYMWEGEN

Kaiser Friedrich Museum, Berlin



THE UNIVERSITY PRINTS
BOSTON

JAN VAN GOYEN. 1596—1656
DUTCH SCHOOL



VIEW OF THE MAAS BEFORE DORDRECHT
Rijks Museum, Amsterdam

JAN VAN GOYEN. 1596 — 1656
DUTCH SCHOOL



THE UNIVERSITY PRINTS
BOSTON

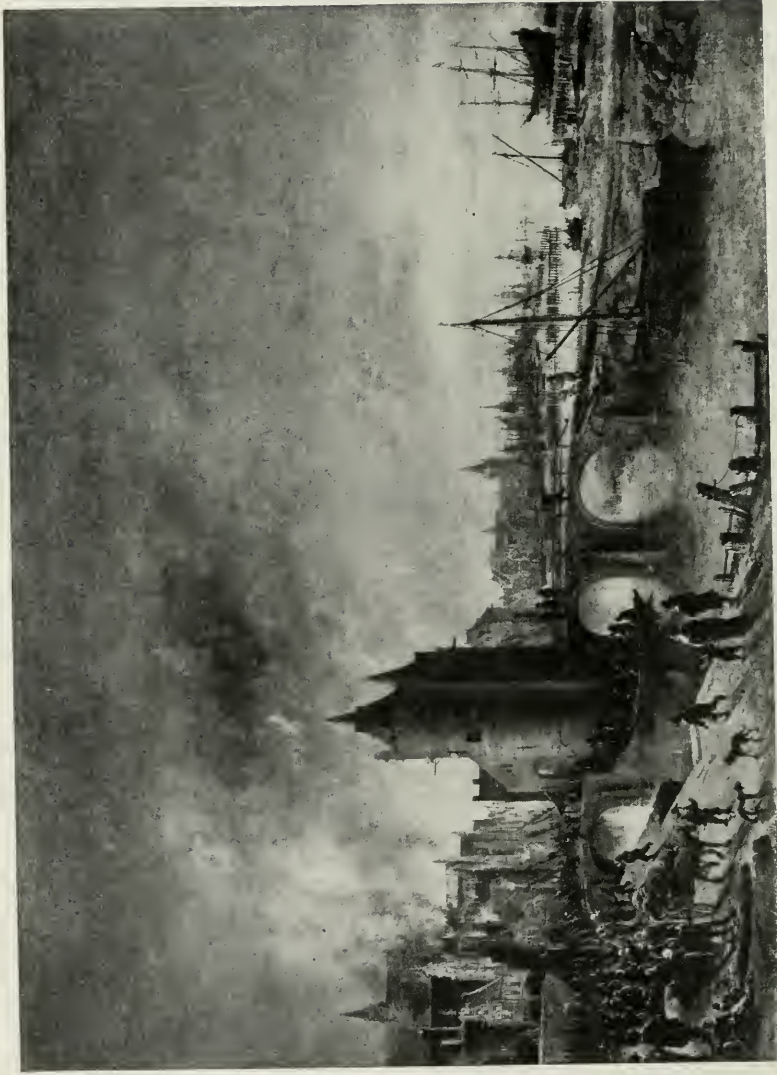


LANDSCAPE BY MOONLIGHT
Mauritshuis, The Hague



THE UNIVERSITY PRINTS
BOSTON

AART VAN DER NEER. 1603—1677
DUTCH SCHOOL



FIRE IN A DUTCH TOWN

Kaiser Friedrich Museum, Berlin

AART VAN DER NEER. 1603—1677
DUTCH SCHOOL



THE UNIVERSITY PRESS
BOSTON



QUARRELING GAMESTERS
Alte Pinakothek, Munich

ADRIAEN BROUWER. 1605 — 1641
DUTCH SCHOOL



THE UNIVERSITY PRINTS
BOSTON



THE SMOKER
Louvre, Paris



THE UNIVERSITY PRINTS
BOSTON

ADRIAEN BROUWER. 1605—1641
DUTCH SCHOOL



LANDSCAPE BY MOONLIGHT
Kaiser Friedrich Museum, Berlin

ADRIAEN BROUWER. 1605—1641
DUTCH SCHOOL



THE UNIVERSITY PRINTS
BOSTON



THE MONEY-CHANGER
Kaiser Friedrich Museum, Berlin

REMBRANDT VAN RIJN. 1606—1669
DUTCH SCHOOL



THE UNIVERSITY PRINTS
BOSTON



STUDY OF A HEAD
Gallery, Cassel



THE UNIVERSITY PRINTS
BOSTON

REMBRANDT VAN RIJN, 1606—1669
DUTCH SCHOOL



PORTRAIT OF REMBRANDT'S FATHER
Mauritshuis, The Hague



THE UNIVERSITY PRINTS
BOSTON

REMBRANDT VAN RIJN. 1606—1669
DUTCH SCHOOL



PRESENTATION IN THE TEMPLE
Mauritshuis, The Hague



THE UNIVERSITY PRINTS
BOSTON

REMBRANDT VAN RIJN. 1606—1669
DUTCH SCHOOL



PORTRAITS OF A GENTLEMAN AND HIS WIFE
Museum of Fine Arts, Boston



THE UNIVERSITY PRINTS
BOSTON

REMBRANDT VAN RIJN, 1606 — 1669
DUTCH SCHOOL



DR. TULP'S ANATOMY LESSON

Mauritshuis, The Hague

REMBRANDT VAN RIJN, 1606—1669
DUTCH SCHOOL



THE UNIVERSITY PRINTS
BOSTON



DR. TULP'S ANATOMY LESSON: DETAIL
Mauritshuis, The Hague



THE UNIVERSITY PRINTS
BOSTON

REMBRANDT VAN RIJN. 1606—1669
DUTCH SCHOOL



PORTRAIT OF REMBRANDT'S SISTER

Breva, Milan



THE UNIVERSITY PRINTS
BOSTON

REMBRANDT VAN RIJN. 1606—1669
DUTCH SCHOOL



PHILOSOPHER IN MEDITATION
Louvre, Paris

REMBRANDT VAN RIJN. 1606—1669
DUTCH SCHOOL



THE UNIVERSITY PRINTS
BOSTON



THE SHIPBUILDER AND HIS WIFE
Buckingham Palace, London

THE UNIVERSITY PRINTS
BOSTON



REMBRANDT VAN RIJN, 1606—1669
DUTCH SCHOOL



DESCENT FROM THE CROSS
Alte Pinakothek, Munich



THE UNIVERSITY PRINTS
BOSTON

REMBRANDT VAN RIJN. 1606—1669
DUTCH SCHOOL



PORTRAIT OF SASKIA
Gallery, Cassel



THE UNIVERSITY PRINTS
BOSTON

REMBRANDT VAN RIJN. 1606—1669
DUTCH SCHOOL



REMBRANDT AND SASKIA
Gallery, Dresden



THE UNIVERSITY PRINTS
BOSTON

REMBRANDT VAN RIJN. 1606—1669
DUTCH SCHOOL



REMBRANDT AND SASKIA: DETAIL
Gallery, Cassel



THE UNIVERSITY PRINTS
BOSTON

REMBRANDT VAN RIJN. 1606—1669
DUTCH SCHOOL



PORTRAIT OF REMBRANDT (1635)
Pitti, Florence



THE UNIVERSITY PRINTS
BOSTON

REMBRANDT VAN RIJN. 1606—1669
DUTCH SCHOOL



A POLISH NOBLEMAN
Hermitage, St. Petersburg



THE UNIVERSITY PRINTS
BOSTON

REMBRANDT VAN RIJN. 1606—1669
DUTCH SCHOOL



PORTRAIT OF REMBRANDT: Etching



THE UNIVERSITY PRINTS
BOSTON

REMBRANDT VAN RIJN, 1606 — 1669
DUTCH SCHOOL



RAPE OF GANYMEDE
Gallery, Dresden



THE UNIVERSITY PRINTS
BOSTON

REMBRANDT VAN RIJN. 1606 — 1669
DUTCH SCHOOL



PORTRAIT OF SWALMIUS
Museum, Antwerp



THE UNIVERSITY PRINTS
BOSTON

REMBRANDT VAN RIJN. 1606—1669
DUTCH SCHOOL



THE ANGEL LEAVING TOBIAS
Louvre, Paris



THE UNIVERSITY PRINTS
BOSTON

REMBRANDT VAN RIJN. 1606—1669
DUTCH SCHOOL



LANDSCAPE
Rijks Museum, Amsterdam

REMBRANDT VAN RIJN. 1606—1669
DUTCH SCHOOL



THE UNIVERSITY PRINTS
BOSTON



SAMSON'S WEDDING FEAST

Gallery, Dresden

REMBRANDT VAN RIJN. 1606—1669
DUTCH SCHOOL



THE UNIVERSITY PRINTS
BOSTON



PORTRAIT OF A YOUNG WOMAN
Gallery, Cassel



THE UNIVERSITY PRINTS
BOSTON

REMBRANDT VAN RIJN. 1606—1669
DUTCH SCHOOL



PORTRAIT OF REMBRANDT'S MOTHER
Imperia! Gallery, Vienna



THE UNIVERSITY PRINTS
BOSTON

REMBRANDT VAN RIJN. 1606—1669
DUTCH SCHOOL



PORTRAIT OF REMBRANDT (1640)
National Gallery, London



THE UNIVERSITY PRINTS
BOSTON

REMBRANDT VAN RIJN. 1606—1669
DUTCH SCHOOL



THE CARPENTER'S HOUSEHOLD
Louvre, Paris



THE UNIVERSITY PRINTS
BOSTON

REMBRANDT VAN RIJN. 1606—1669
DUTCH SCHOOL



PORTRAIT OF A MAN, SEATED
Royal Museum, Brussels



THE UNIVERSITY PRINTS
BOSTON

REMBRANDT VAN RIJN. 1606—1669
DUTCH SCHOOL



SASKIA HOLDING A PINK
Gallery, Dresden



THE UNIVERSITY PRINTS
BOSTON

REMBRANDT VAN RIJN. 1606—1669
DUTCH SCHOOL



THE NIGHT WATCH
Rijks Museum, Amsterdam

REMBRANDT VAN RIJN. 1606 — 1669
DUTCH SCHOOL



THE UNIVERSITY PRINTS
BOSTON



PORTRAIT OF ELIZABETH BAS

Ryks Museum, Amsterdam



THE UNIVERSITY PRINTS
BOSTON

REMBRANDT VAN RIJN. 1606—1669
DUTCH SCHOOL



GIRL AT THE WINDOW
Gallery, Dulwich



THE UNIVERSITY PRINTS
BOSTON

REMBRANDT VAN RIJN. 1606—1669
DUTCH SCHOOL



AN OLD WOMAN WEIGHING GOLD
Gallery, Dresden



THE UNIVERSITY PRINTS
BOSTON

REMBRANDT VAN RIJN. 1606—1669
DUTCH SCHOOL



ABRAHAM'S SACRIFICE: Etching



THE UNIVERSITY PRINTS
BOSTON

REMBRANDT VAN RIJN. 1606—1669
DUTCH SCHOOL



CHRIST AT EMMAUS

Louvre, Paris



THE UNIVERSITY PRINTS
BOSTON

REMBRANDT VAN RIJN. 1606—1669
DUTCH SCHOOL



THE RUIN
Gallery, Crissel



THE UNIVERSITY PRINTS
BOSTON

REMBRANDT VAN RIJN. 1606—1669
DUTCH SCHOOL



CHRIST HEALING THE SICK: Etching
(The "Hundred Guilder Print")

THE UNIVERSITY PRINTS
BOSTON

REMBRANDT VAN RIJN, 1606 — 1669
DUTCH SCHOOL



MAN WITH THE HELMET
Kaiser Friedrich Museum, Berlin



THE UNIVERSITY PRINTS
BOSTON

REMBRANDT VAN RIJN. 1606—1669
DUTCH SCHOOL



PORTRAIT OF A LADY (Hendrickje Stoffels?)
Louvre, Paris



THE UNIVERSITY PRINTS
BOSTON

REMBRANDT VAN RIJN. 1606—1669
DUTCH SCHOOL



THE ENTOMBMENT
Gallery, Dresden



THE UNIVERSITY PRINTS
BOSTON

REMBRANDT VAN RIJN. 1606—1669
DUTCH SCHOOL



WOMAN BATHING (Bathsheba)
Louvre, Paris



THE UNIVERSITY PRINTS
BOSTON

REMBRANDT VAN RIJN. 1606—1669
DUTCH SCHOOL



PORTRAIT OF AN OLD MAN
Gallery, Dresden



THE UNIVERSITY PRINTS
BOSTON

REMBRANDT VAN RIJN. 1606—1669
DUTCH SCHOOL



JACOB BLESSING THE SONS OF JOSEPH
Gallery, Cassel



THE UNIVERSITY PRINTS
BOSTON

REMBRANDT VAN RIJN. 1606—1669
DUTCH SCHOOL



PORTRAIT OF TITUS
Wallace Collection, London



THE UNIVERSITY PRINTS
BOSTON

REMBRANDT VAN RIJN. 1606—1669
DUTCH SCHOOL



THE RABBI

National Gallery, London



THE UNIVERSITY PRINTS
BOSTON

REMBRANDT VAN RIJN. 1606—1669
DUTCH SCHOOL



PORTRAIT OF NICOLAES BRUYNINGH
Gallery, Cassel



THE UNIVERSITY PRINTS
BOSTON

REMBRANDT VAN RIJN. 1606—1669
DUTCH SCHOOL



PORTRAIT OF REMBRANDT (1658)
Imperial Gallery, Vienna



THE UNIVERSITY PRINTS
BOSTON

REMBRANDT VAN RIJN. 1606—1669
DUTCH SCHOOL



OLD MAN WITH RED CAP
National Gallery, London



THE UNIVERSITY PRINTS
BOSTON

REMBRANDT VAN RIJN. 1606—1669
DUTCH SCHOOL



YOUNG WOMAN AT THE WINDOW (Hendrickje)
Kaiser Friedrich Museum, Berlin



THE UNIVERSITY PRINTS
BOSTON

REMBRANDT VAN RIJN. 1606—1669
DUTCH SCHOOL



SYNDICS OF THE CLOTH HALL
Rijks Museum, Amsterdam

REMBRANDT VAN RIJN, 1606—1669
DUTCH SCHOOL



THE UNIVERSITY PRINTS
BOSTON



PORTRAIT OF REMBRANDT (1664)

National Gallery, London



THE UNIVERSITY PRINTS
BOSTON

REMBRANDT VAN RIJN. 1606—1669
DUTCH SCHOOL



OLD MAN WITH PEARLS IN HIS HAT

Gallery, Dresden



THE UNIVERSITY PRINTS
BOSTON

REMBRANDT VAN RIJN. 1606—1669
DUTCH SCHOOL



THE ARTIST IN HIS STUDIO
Gallery, Dresden



THE UNIVERSITY PRINTS
BOSTON

ADRIAEN VAN OSTADE. 1610—1685
DUTCH SCHOOL



MEN AND WOMEN IN A VILLAGE INN
Gallery, Dresden

ADRIAEN VAN OOSTADE. 1610—1685
DUTCH SCHOOL



THE UNIVERSITY PRINTS
BOSTON



THE ITINERANT FIDDLER
Mauritshuis, The Hague



THE UNIVERSITY PRINTS
BOSTON

ADRIAEN VAN OSTADE. 1610—1685
DUTCH SCHOOL



THE SMOKER
Gallery, Dulwich



THE UNIVERSITY PRINTS
BOSTON

ADRIAEN VAN OSTADE. 1610—1685
DUTCH SCHOOL



HERMIT IN PRAYER
Gallery, Dresden



THE UNIVERSITY PRINTS
BOSTON

GERARD DOU. 1613—1675
DUTCH SCHOOL



THE YOUNG MOTHER
Mauritshuis, The Hague



THE UNIVERSITY PRINTS
BOSTON

GERARD DOU. 1613—1675
DUTCH SCHOOL



THE DROPSICAL WOMAN
Louvre, Paris



THE UNIVERSITY PRINTS
BOSTON

GERARD DOU, 1613—1675
DUTCH SCHOOL



THE OLD SCHOOLMASTER
Gallery, Dresden



THE UNIVERSITY PRINTS
BOSTON

GERARD DOU, 1613—1675
DUTCH SCHOOL



GIRL CHOPPING ONIONS
Buckingham Palace, London



THE UNIVERSITY PRINTS
BOSTON

GERARD DOU. 1613—1675
DUTCH SCHOOL



BANQUET OF ARQUEBUSIERS, CELEBRATING THE PEACE OF WESTPHALIA
Rijks Museum, Amsterdam

BARTHOLOMEW VAN DER HELST. 1613 — 1670
DUTCH SCHOOL



THE UNIVERSITY PRINTS
BOSTON



ARCHERY PRIZES OF THE GUILD OF ST. SEBASTIAN

Louvre, Paris

THE UNIVERSITY PRINTS
BOSTON



BARTHOLOMEW VAN DER HELST. 1613—1670
DUTCH SCHOOL



PORTRAIT OF PAUL POTTER
Mauritshuis, The Hague



THE UNIVERSITY PRINTS
BOSTON

BARTHOLOMEW VAN DER HELST. 1613—1670
DUTCH SCHOOL



PORTRAIT OF JAN VAN MALE
Metropolitan Museum, New York



THE UNIVERSITY PRINTS
BOSTON

BARTHOLOMEW VAN DER HELST. 1613—1670
DUTCH SCHOOL



ISAAC BLESSING JACOB
Rijks Museum, Amsterdam

THE UNIVERSITY PRINTS
BOSTON



GOVAERT FLINCK. 1615 — 1660
DUTCH SCHOOL



SCHUTZENFEST
Rijks Museum, Amsterdam

GOVAERT FLINCK. 1615 — 1660
DUTCH SCHOOL



THE UNIVERSITY PRINTS
BOSTON



REGENTS OF THE LEPERS' HOSPITAL

Rijks Museum, Amsterdam

FERDINAND BOL. 1616—1680
DUTCH SCHOOL



THE UNIVERSITY PRINTS
BOSTON



PORTRAIT OF A MATHEMATICIAN
Louvre, Paris



THE UNIVERSITY PRINTS
BOSTON

FERDINAND BOL. 1616—1680
DUTCH SCHOOL



JACOB'S DREAM
Gallery, Dresden



THE UNIVERSITY PRINTS
BOSTON

FERDINAND BOL. 1616.—1680
DUTCH SCHOOL



PORTRAIT OF A MAN IN BLACK
National Gallery, London



THE UNIVERSITY PRINTS
BOSTON

GERARD TER BORCH. 1617—1681
DUTCH SCHOOL



THE GALLANT
Louvre, Paris



THE UNIVERSITY PRINTS
BOSTON

GERARD TER BORCH. 1617—1681
DUTCH SCHOOL



THE DISPATCH
Mauritshuis, The Hague



THE UNIVERSITY PRINTS
BOSTON

GERARD TER BORCH. 1617—1681
DUTCH SCHOOL



THE CONCERT

Kaiser Friedrich Museum, Berlin



THE UNIVERSITY PRINTS
BOSTON

GERARD TER BORCH. 1617—1681
DUTCH SCHOOL



THE APPLE-PARER
Imperial Gallery, Vienna



THE UNIVERSITY PRINTS
BOSTON

GERARD TER BORCH. 1617—1681
DUTCH SCHOOL



PATERNAL ADMONITION
Kaiser Friedrich Museum, Berlin



THE UNIVERSITY PRINTS
BOSTON

GERARD TER BORCH. 1617—1681
DUTCH SCHOOL



THE GUITAR LESSON
National Gallery, London



THE UNIVERSITY PRINTS
BOSTON

GERARD TER BORCH. 1617—1681
DUTCH SCHOOL



LADY WASHING HER HANDS
Gallery, Dresden



THE UNIVERSITY PRINTS
BOSTON

GERARD TER BORCH. 1617—1681
DUTCH SCHOOL



THE HOTEL STABLE
Gallery, Dresden

THE UNIVERSITY PRINTS
BOSTON

PHILIPS WOUWERMANN, 1619 — 1668
DUTCH SCHOOL



CAVALRY SKIRMISH ON A BRIDGE
Pinacoteca, Turin

PHILIPS WOUWERMANN, 1619 — 1668
DUTCH SCHOOL



THE UNIVERSITY PRINTS
BOSTON



THE KICKING HORSE
Rijks Museum, Amsterdam

PHILIPS WOUWERMANN. 1619 — 1668
DUTCH SCHOOL



THE UNIVERSITY PRINTS
BOSTON



THE LABORERS' MIDDAY MEAL
Gallery, Cassel

THE UNIVERSITY PRINTS
BOSTON



PHILIPS WOUWERMANN. 1619 — 1668
DUTCH SCHOOL



THE FORD
Louvre, Paris

CLAES PIETERSZ BERCHEM. 1620—1683
DUTCH SCHOOL



THE UNIVERSITY PRINTS
BOSTON



A ROMAN FOUNTAIN
Gallerij, Dulwich

CLAES PIETERSZ BERCHEM. 1620 — 1683
DUTCH SCHOOL



THE UNIVERSITY PRINTS
BOSTON



PORTRAIT OF THE ARTIST'S DAUGHTER
Museum of Fine Arts, Boston



THE UNIVERSITY PRINTS
BOSTON

AELBERT CUYP. 1620—1691
DUTCH SCHOOL

ALBERT CUYP. 1620—1691
DUTCH SCHOOL

THE PROMENADE
Louvre Paris

THE UNIVERSITY PRINTS
BOSTON





RIVER SCENE
Kaiser Friedrich Museum, Berlin

THE UNIVERSITY PRINTS
BOSTON

ALBERT CUYPER, 1620 — 1691
DUTCH SCHOOL



LANDSCAPE WITH CATTLE
National Gallery, London

AELBERT CUYP, 1620—1691
DUTCH SCHOOL



THE UNIVERSITY PRINTS
BOSTON



PORTRAIT OF A MAN
National Gallery, London



THE UNIVERSITY PRINTS
BOSTON

AELBERT CUYP. 1620—1691
DUTCH SCHOOL



HALT ON THE JOURNEY

Louvre, Paris



THE UNIVERSITY PRINTS
BOSTON

ISAAC VAN OSTADE. 1621—1649
DUTCH SCHOOL



WINTER SCENE
National Gallery, London



THE UNIVERSITY PRINTS
BOSTON

ISAAC VAN OSTADE. 1621—1649
DUTCH SCHOOL



LANDSCAPE BY EVENING LIGHT
Alte Pinakothek, Munich



THE UNIVERSITY PRINTS
BOSTON

ALLART EVERDINGEN. 1621—1675
DUTCH SCHOOL



THE GREAT WATERFALL
Gallery, Dresden



THE UNIVERSITY PRINTS
BOSTON

ALLART EVERDINGEN. 1621—1675
DUTCH SCHOOL



THE PASTURE
Louvre, Paris



THE UNIVERSITY PRINTS
BOSTON

KAREL DU JARDIN, 1622—1678
DUTCH SCHOOL



THE YOUNG BULL
Mauritshuis, The Hague

PAULUS POTTER, 1625 — 1664
DUTCH SCHOOL



THE UNIVERSITY PRINTS
BOSTON



THE WOLF HOUND
Hermitage, St. Petersburg

PAULUS POTTER. 1625—1654
DUTCH SCHOOL



THE UNIVERSITY PRINTS
BOSTON



THE OLD GREY HUNTER
National Gallery, London



THE UNIVERSITY PRINTS
BOSTON

PAULUS POTTER. 1625—1654
DUTCH SCHOOL



FARMYARD SCENE
Mauritshuis, The Hague

PAULUS POTTER. 1625—1654.
DUTCH SCHOOL



THE UNIVERSITY PRINTS
BOSTON



THE MARRIAGE AT CANA
Gallery, Dresden



THE UNIVERSITY PRINTS
BOSTON

JAN STEEN. 1626—1679
DUTCH SCHOOL



THE SICK GIRL
Ryks Museum, Amsterdam



THE UNIVERSITY PRINTS
BOSTON

JAN STEEN. 1626—1679
DUTCH SCHOOL



THE ARTIST'S FAMILY
Mauritshuis, The Hague

JAN STEEN. 1626—1679
DUTCH SCHOOL



THE UNIVERSITY PRINTS
BOSTON



THE WATERFALL
National Gallery, London



THE UNIVERSITY PRINTS
BOSTON

JACOB VAN RUISDAEL. 1628—1682
DUTCH SCHOOL



TROUBLED SEA
Kaiser Friedrich Museum, Berlin



THE UNIVERSITY PRINTS
BOSTON

JACOB VAN RUISDAEL. 1628—1682
DUTCH SCHOOL



ENTRANCE TO THE FOREST

Louvre, Paris


THE UNIVERSITY PRINTS
BOSTON

JACOB VAN RUISDAEL, 1628—1682
DUTCH SCHOOL



EDGE OF THE WOOD
Gallery, Drottach

JACOB VAN RUISDAEL. 1628—1682
DUTCH SCHOOL



THE UNIVERSITY PRINTS
BOSTON



THE JEWISH CEMETERY
Gallery, Dresden



THE UNIVERSITY PRINTS
BOSTON

JACOB VAN RUISDAEL. 1628—1682
DUTCH SCHOOL



BENTHEIM CASTLE
Gallery, Dresden



THE UNIVERSITY PRINTS
BOSTON

JACOB VAN RUISDAEL, 1628—1682
DUTCH SCHOOL



KITCHEN SCENE
Ryks Museum, Amsterdam



THE UNIVERSITY PRINTS
BOSTON

GABRIEL METSU. 1630—1667
DUTCH SCHOOL



OLD WOMAN MEDITATING
Ryks Museum, Amsterdam



THE UNIVERSITY PRINTS
BOSTON

GABRIEL METSU. 1630—1667
DUTCH SCHOOL



A DUTCH WOMAN
Louvre, Paris



THE UNIVERSITY PRINTS
BOSTON

GABRIEL METSU. 1630—1667
DUTCH SCHOOL



THE SLEEPING SPORTSMAN
Wallace Collection, London



THE UNIVERSITY PRINTS
BOSTON

GABRIEL METSU. 1630—1667
DUTCH SCHOOL



PORTRAIT OF ADMIRAL TROMP
Louvre, Paris



THE UNIVERSITY PRINTS
BOSTON

GABRIEL METSU, 1630—1667
DUTCH SCHOOL



THE COUNTRY HOUSE
Ryks Museum, Amsterdam



THE UNIVERSITY PRINTS
BOSTON

PIETER DE HOECH. 1630—1677?
DUTCH SCHOOL



COURTYARD OF A DUTCH HOUSE
National Gallery, London



THE UNIVERSITY PRINTS
BOSTON

PIETER DE HOECH. 1630—1677?
DUTCH SCHOOL



MATERNAL CARE
Rijks Museum, Amsterdam


THE UNIVERSITY PRINTS
BOSTON

PIETER DE HOOCH. 1630 — 1677 ?
DUTCH SCHOOL



AN INTERIOR
Wallace Collection, London



THE UNIVERSITY PRINTS
BOSTON

PIETER DE HOOCH. 1630—1677?
DUTCH SCHOOL



THE BUTTERY

Ryks Museum, Amsterdam



THE UNIVERSITY PRINTS
BOSTON

PIETER DE HOOCH. 1630—1677?
DUTCH SCHOOL



THE LACE-MAKER
Louvre, Paris



THE UNIVERSITY PRINTS
BOSTON

JOHANNES VERMEER, 1632—1675
DUTCH SCHOOL



GENTLEMAN AND LADY DRINKING WINE

Kaiser Friedrich Museum, Berlin

JOHANNES VERMEER. 1632—1675
DUTCH SCHOOL



THE UNIVERSITY PRINTS
BOSTON



YOUNG WOMAN AT HER TOILET
Kaiser Friedrich Museum, Berlin



THE UNIVERSITY PRINTS
BOSTON

JOHANNES VERMEER. 1632—1675
DUTCH SCHOOL



THE LETTER
Gallery, Dresden



THE UNIVERSITY PRINTS
BOSTON

JOHANNES VERMEER. 1632—1675
DUTCH SCHOOL



THE CARD-PLAYERS
National Gallery, London



THE UNIVERSITY PRINTS
BOSTON

NICOLAES MAES. 1632—1693
DUTCH SCHOOL



THE OLD LACE-MAKER
Royal Museum, Brussels



THE UNIVERSITY PRINTS
BOSTON

NICOLAES MAES. 1632—1693
DUTCH SCHOOL



THE SPINNER
Ryks Museum, Amsterdam



THE UNIVERSITY PRINTS
BOSTON

NICOLAES MAES. 1632—1693
DUTCH SCHOOL



GRACE BEFORE MEAT
Ryks Museum, Amsterdam



THE UNIVERSITY PRINTS
BOSTON

NICOLAES MAES. 1632—1693
DUTCH SCHOOL



PORTRAIT OF A MAN
National Gallery, London



THE UNIVERSITY PRINTS
BOSTON

NICOLAES MAES. 1632—1693
DUTCH SCHOOL



DIRECTRESSES OF AN ORPHANAGE
Town Hall, Haarlem



THE UNIVERSITY PRINTS
BOSTON

JAN BRAY, d. 1697
DUTCH SCHOOL



SHIPPING IN A CALM
National Gallery, London

THE UNIVERSITY PRINTS
BOSTON

WILLEM VAN DE VELDE. 1633—1707
DUTCH SCHOOL



A GALE
National Gallery, London

WILLEM VAN DE VELDE. 1633 — 1707
DUTCH SCHOOL



THE UNIVERSITY PRINTS
BOSTON



THE CANNON-SHOT
Ryks Museum, Amsterdam



THE UNIVERSITY PRINTS
BOSTON

WILLEM VAN DE VELDE. 1633—1707
DUTCH SCHOOL



THE TINKER
Gallery, Dresden





ARTIST AND LADY
Gallery, Dresden



THE UNIVERSITY PRINTS
BOSTON

FRANS MIERIS. 1635—1681
DUTCH SCHOOL



EAGLES ATTACKING FOWL

Louvre, Paris

MELCHIOR D' HONDECOETER. 1636—1695
DUTCH SCHOOL



THE UNIVERSITY PRINTS
BOSTON



THE WATER-MILL
National Gallery, London

THE UNIVERSITY PRINTS
BOSTON

MEINDERT HOBBEEMA. 1638—1709
DUTCH SCHOOL



MIDDLEHARNAIS AVENUE
National Gallery, London

MEINDERT HOBBEEMA. 1638 - 1709
DUTCH SCHOOL



THE UNIVERSITY PRINTS
BOSTON



THE LETTER-WRITER
Gallery, Dresden



THE UNIVERSITY PRINTS
BOSTON

CASPAR NETSCHER. 1639—1684
DUTCH SCHOOL



LADY AT A SPINNING-WHEEL
National Gallery, London



THE UNIVERSITY PRINTS
BOSTON

CASPAR NETSCHER. 1639-1684
DUTCH SCHOOL



MADAME DE MONTESPAN
Gallery, Dresden



THE UNIVERSITY PRINTS
BOSTON

CASPAR NETSCHER. 1639—1684
DUTCH SCHOOL



A DEAD HARE
Alte Pinakothek, Munich



THE UNIVERSITY PRINTS
BOSTON

JAN WEENIX. 1640—1719
DUTCH SCHOOL



GIRL WITH A CANDLE
Gallery, Dresden



THE UNIVERSITY PRINTS
BOSTON

GODFRIED SCHALKEN. 1643—1706
DUTCH SCHOOL



DANCING NYMPHS
Louvre, Paris



THE UNIVERSITY PRINTS
BOSTON

ADRIAEN VAN DER WERFF. 1659—1722
DUTCH SCHOOL



A MARKET STALL
Fitzwilliam Collection, Cambridge


THE UNIVERSITY PRINTS
BOSTON

WILLEM VAN MIERIS. 1662—1747
DUTCH SCHOOL



THE TRUMPETER
Gallery, Dresden



THE UNIVERSITY PRINTS
BOSTON

WILLEM VAN MIERIS. 1662—1747
DUTCH SCHOOL



FRUIT AND FLOWERS

Louvre Paris



THE UNIVERSITY PRINTS
BOSTON

JAN VAN HUYSUM. 1682—1749
DUTCH SCHOOL



THE TRINITY, WITH MARY AND JOHN : Triptych
Kaiser Friedrich Museum, Berlin

MEISTER VON SOEST. fl. 1250—1270
GERMAN SCHOOL



THE UNIVERSITY PRINTS
BOSTON



MADONNA OF THE BEAN-FLOWER; ST. CATHERINE; ST. BARBARA: Triptych
Museum, Cologne



THE UNIVERSITY PRINTS
BOSTON

MEISTER WILHELM, fl. LATE XIV. CENTURY
GERMAN SCHOOL



IMHOFF ALTARPIECE
S. Lorenz, Nuremberg

LATE XIV. CENTURY?
GERMAN SCHOOL



THE UNIVERSITY PRINTS
BOSTON



MADONNA OF THE ROSE ARBOR
Museum, Cologne



THE UNIVERSITY PRINTS
BOSTON

STEPHAN LOCHNER. d. 1451
GERMAN SCHOOL



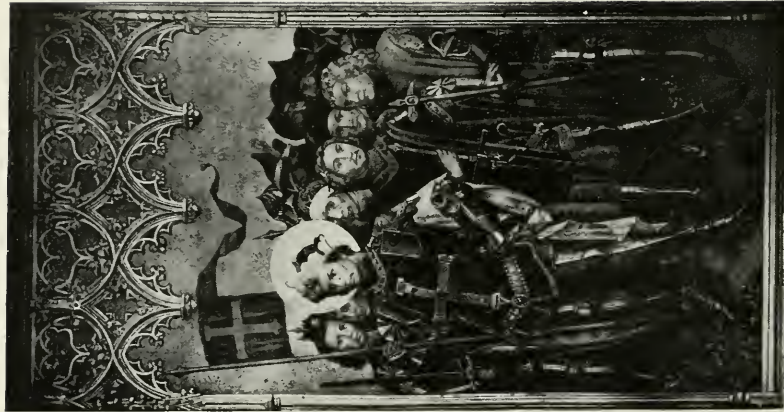
ADORATION OF THE MAGI: Altarpiece, Center Panel

Cathedral, Cologne

STEPHAN LOCHNER. d. 1451
GERMAN SCHOOL



THE UNIVERSITY PRINTS
BOSTON



ST. URSULA ; ST. GEREON : Altarpiece, Inside of Wings
Cathedral, Cologne



THE UNIVERSITY PRINTS
BOSTON



STEPHAN LOCHNER, d. 1451
GERMAN SCHOOL



THE ANNUNCIATION: Altarpiece, Outside of Wings
Cathedral, Cologne

STEPHAN LOCHNER. d. 1451
GERMAN SCHOOL



THE UNIVERSITY PRINTS
BOSTON



THE ANNUNCIATION: Panel of Altarpiece
S. George, Dinkelsbühl



THE UNIVERSITY PRINTS
BOSTON

FREDERICK HERLEN. 1449? — 1491?
GERMAN SCHOOL



PRESENTATION OF THE VIRGIN

Alte Pinakothek, Munich

THE UNIVERSITY PRINTS
BOSTON

MASTER OF THE LIFE OF MARY. fl. 1460 — 1480
GERMAN SCHOOL



THE CRUCIFIXION
Kaiser Friedrich Museum, Berlin



THE UNIVERSITY PRINTS
BOSTON

NUREMBERG MASTER. fl. 1460—1500
GERMAN SCHOOL



THE THREE MARIES AT THE TOMB

Museum, Cologne



THE UNIVERSITY PRINTS
BOSTON

MASTER OF THE LYVERSBERG PASSION. fl. 1463-1480
GERMAN SCHOOL



DESCENT FROM THE CROSS

Louvre, Paris



THE UNIVERSITY PRINTS
BOSTON

MASTER OF COLOGNE. XV. CENTURY
GERMAN SCHOOL



THE CRUCIFIXION
Alte Pinakothek, Munich



THE UNIVERSITY PRINTS
BOSTON

MICHAEL WOLGEMUT. 1434—1519
GERMAN SCHOOL



VISION OF ST. BERNARD: Detail, Peringsdörfer Altarpiece
Germanic Museum, Nürnberg





NATIVITY

Alte Pinakothek, Munich



THE UNIVERSITY PRINTS
BOSTON

MARTIN SCHONGAUER. c. 1450—1491
GERMAN SCHOOL



CHRIST BEFORE PILATE
Royal Museum, Brussels



MADONNA WITH SAINTS
Germanic Museum, Nuremberg

BARTHOLOMÄUS ZEITBLUM. c. 1450—1518
GERMAN SCHOOL



THE UNIVERSITY PRINTS
BOSTON



ST. SEBASTIAN: Altarpiece, Center Panel
Alte Pinakothek, Munich



THE UNIVERSITY PRINTS
BOSTON

HANS HOLBEIN, THE ELDER. c. 1460—1524
GERMAN SCHOOL



ST. ELIZABETH : ST. BARBARA : Altarpiece, Inside of Wings
Alte Pinakotek, Munich



THE UNIVERSITY PRINTS
 BOSTON

HANS HOLBEIN, THE ELDER. c. 1460—1524
 GERMAN SCHOOL



ANNUNCIATION: Altarpiece, Outside of Wings
Alte Pinakothek, Munich



THE UNIVERSITY PRINTS
BOSTON

HANS HOLBEIN, THE ELDER. c. 1460-1524
GERMAN SCHOOL



DEATH OF MARY: Triptych, Center Panel
Alte Pinakothek, Munich

MASTER OF DEATH OF MARY, d. 1540
GERMAN SCHOOL



THE UNIVERSITY PRINTS
BOSTON



DONORS WITH PATRON SAINTS: Wings of Triptych
Alte Pinakothek, Munich



MASTER OF DEATH OF MARY. d. 1540
GERMAN SCHOOL



THE UNIVERSITY PRINTS
BOSTON



ST. GEORGE
S. Lorenz, Nuremberg



THE UNIVERSITY PRINTS
BOSTON

HANS VON KULMBACH. d. 1540?
GERMAN SCHOOL



ADORATION OF THE MAGI
Kaiser Friedrich Museum, Berlin



THE UNIVERSITY PRINTS
BOSTON

HANS VON KULMBACH. d. 1540?
GERMAN SCHOOL



DÜRER AT THIRTEEN: Drawing



THE UNIVERSITY PRINTS
BOSTON

ALBRECHT DÜRER. 1471—1528
GERMAN SCHOOL



THE PRODIGAL SON: Engraving



THE UNIVERSITY PRINTS
BOSTON

ALBRECHT DÜRER, 1471—1528
GERMAN SCHOOL



ST. ANTHONY; MADONNA IN ADORATION; ST. SEBASTIAN: Triptych
Gallery, Dresden

THE UNIVERSITY PRINTS
BOSTON



ALBRECHT DÜRER. 1471—1528
GERMAN SCHOOL



PORTRAIT OF DÜRER'S FATHER
Uffizi, Florence



THE UNIVERSITY PRINTS
BOSTON

ALBRECHT DÜRER. 1471—1528
GERMAN SCHOOL



PORTRAIT OF DÜRER
Alte Pinakothek, Munich



THE UNIVERSITY PRINTS
BOSTON

ALBRECHT DÜRER. 1471—1528
GERMAN SCHOOL



DESCENT FROM THE CROSS
Alte Pinakothek, Munich



THE UNIVERSITY PRINTS
BOSTON

ALBRECHT DÜRER. 1471—1528
GERMAN SCHOOL



ST. GEORGE; ST. EUSTACE
Wings of the Paumgartner Altarpiece
Alte Pinakothek, Munich



THE UNIVERSITY PRINTS
BOSTON

ALBRECHT DÜRER. 1471—1528
GERMAN SCHOOL



ST. EUSTACE (Before the Restoration)
Wing of the Paumgartner Altarpiece
Alte Pinakothek, Munich



THE UNIVERSITY PRINTS
BOSTON

ALBRECHT DÜRER. 1471—1528
GERMAN SCHOOL



ADORATION OF THE MAGI
Uffizi, Florence



THE UNIVERSITY PRINTS
BOSTON

ALBRECHT DÜRER. 1471—1528
GERMAN SCHOOL



ADORATION OF THE MAGI: Detail
Uffizi, Florence

ALBRECHT DÜRER. 1471—1528
GERMAN SCHOOL



THE UNIVERSITY PRINTS
BOSTON



THE GREAT WHITE HORSE: Engraving



THE UNIVERSITY PRINTS
BOSTON

ALBRECHT DÜRER. 1471 — 1528
GERMAN SCHOOL



LEGEND OF ST. EUSTACE: Engraving



THE UNIVERSITY PRINTS
BOSTON

ALBRECHT DÜRER. 1471—1528
GERMAN SCHOOL



MADONNA AND CHILD
Kaiser Friedrich Museum, Berlin



THE UNIVERSITY PRINTS
BOSTON

ALBRECHT DÜRER. 1471—1528
GERMAN SCHOOL



CHRIST ON THE CROSS
Gallery, Dresden



THE UNIVERSITY PRINTS
BOSTON

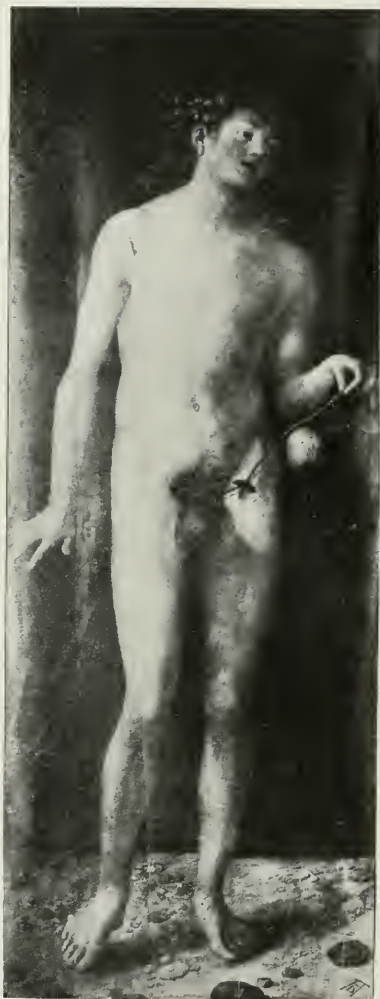
ALBRECHT DÜRER. 1471—1528
GERMAN SCHOOL



PORTRAIT OF A LADY
Kaiser Friedrich Museum, Berlin


THE UNIVERSITY PRINTS
BOSTON

ALBRECHT DÜRER. 1471—1528
GERMAN SCHOOL



ADAM AND EVE
Prado, Madrid



THE UNIVERSITY PRINTS
BOSTON

ALBRECHT DÜRER. 1471—1528
GERMAN SCHOOL



ADORATION OF THE TRINITY
Imperial Gallery, Vienna



THE UNIVERSITY PRINTS
BOSTON

ALBRECHT DÜRER. 1471—1528
GERMAN SCHOOL

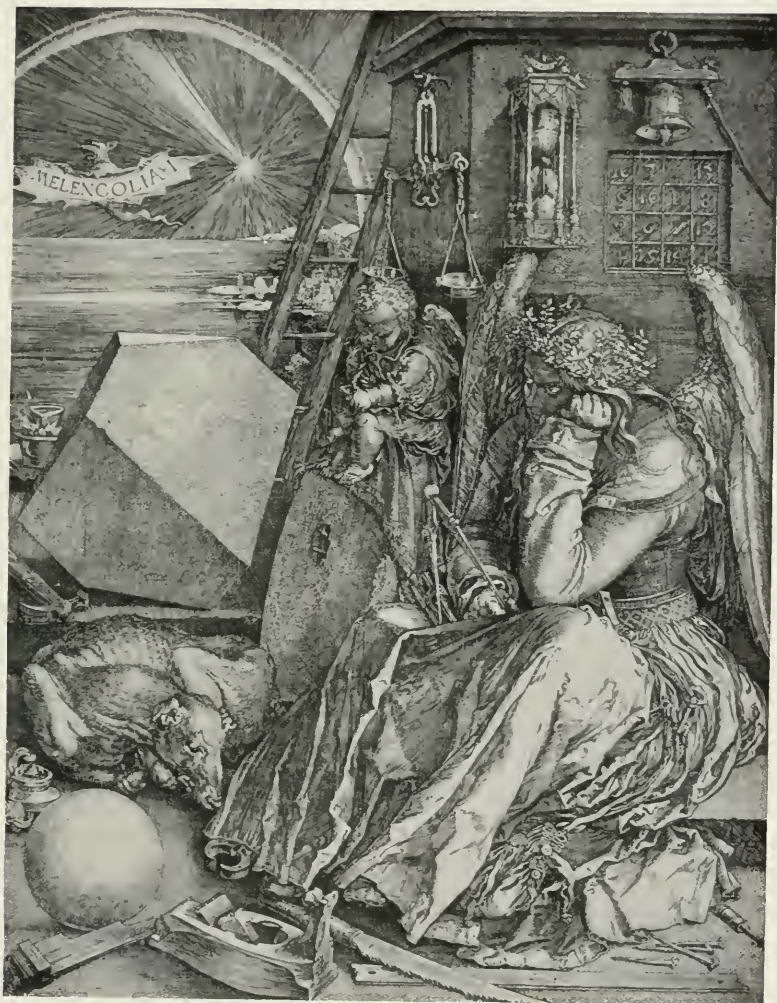


THE KNIGHT, DEATH AND THE DEVIL: Engraving



THE UNIVERSITY PRINTS
BOSTON

ALBRECHT DÜRER. 1471-1528
GERMAN SCHOOL



MELANCHOLY: Engraving



THE UNIVERSITY PRINTS
BOSTON

ALBRECHT DÜRER, 1471—1528
GERMAN SCHOOL



MADONNA CROWNED BY ANGELS: Engraving



THE UNIVERSITY PRINTS
BOSTON

ALBRECHT DÜRER. 1471—1528
GERMAN SCHOOL



ST. ANTHONY: Engraving

ALBRECHT DÜRER, 1471—1528
GERMAN SCHOOL



THE UNIVERSITY PRINTS
BOSTON



PRAYING HANDS: Drawing



THE UNIVERSITY PRINTS
BOSTON

ALBRECHT DÜRER. 1471—1528
GERMAN SCHOOL



PORTRAIT OF MAXIMILIAN
Imperial Gallery, Vienna



THE UNIVERSITY PRINTS
 BOSTON

ALBRECHT DÜRER. 1471—1528
 GERMAN SCHOOL



PORTRAIT OF BERNARD VAN ORLEY
Gallery, Dresden



THE UNIVERSITY PRINTS
BOSTON

ALBRECHT DÜRER. 1471—1528
GERMAN SCHOOL



PORTRAIT OF HANS IMHOFF?

Prado, Madrid



THE UNIVERSITY PRINTS
BOSTON

ALBRECHT DÜRER. 1471—1528
GERMAN SCHOOL



PORTRAIT OF HIERONYMUS HOLZSCHUHER
Kaiser Friedrich Museum, Berlin



THE UNIVERSITY PRINTS
BOSTON

ALBRECHT DÜRER. 1471-1528
GERMAN SCHOOL



ST. JOHN AND ST. PETER
Alte Pinakothek, Munich



THE UNIVERSITY PRINTS
BOSTON

ALBRECHT DÜRER. 1471—1528
GERMAN SCHOOL



ST. PAUL AND ST. MARK
Alte Pinakothek, Munich


THE UNIVERSITY PRINTS
BOSTON

ALBRECHT DÜRER. 1471—1528
GERMAN SCHOOL



THE REPOSE IN EGYPT
Kaiser Friedrich Museum, Berlin



THE UNIVERSITY PRINTS
BOSTON

LUCAS CRANACH, THE ELDER. 1472—1553
GERMAN SCHOOL



PORTRAIT OF A LADY
National Gallery, London



THE UNIVERSITY PRINTS
BOSTON

LUCAS CRANACH, THE ELDER. 1472—1553
GERMAN SCHOOL



JUDITH

Imperial Gallery, Vienna



THE UNIVERSITY PRINTS
BOSTON

LUCAS CRANACH, THE ELDER. 1472 — 1553
GERMAN SCHOOL



THE WOMAN TAKEN IN ADULTERY

Alte Pinakothek, Munch

THE UNIVERSITY PRINTS
BOSTON



LUCAS CRANACH, THE ELDER. 1472 — 1553
GERMAN SCHOOL

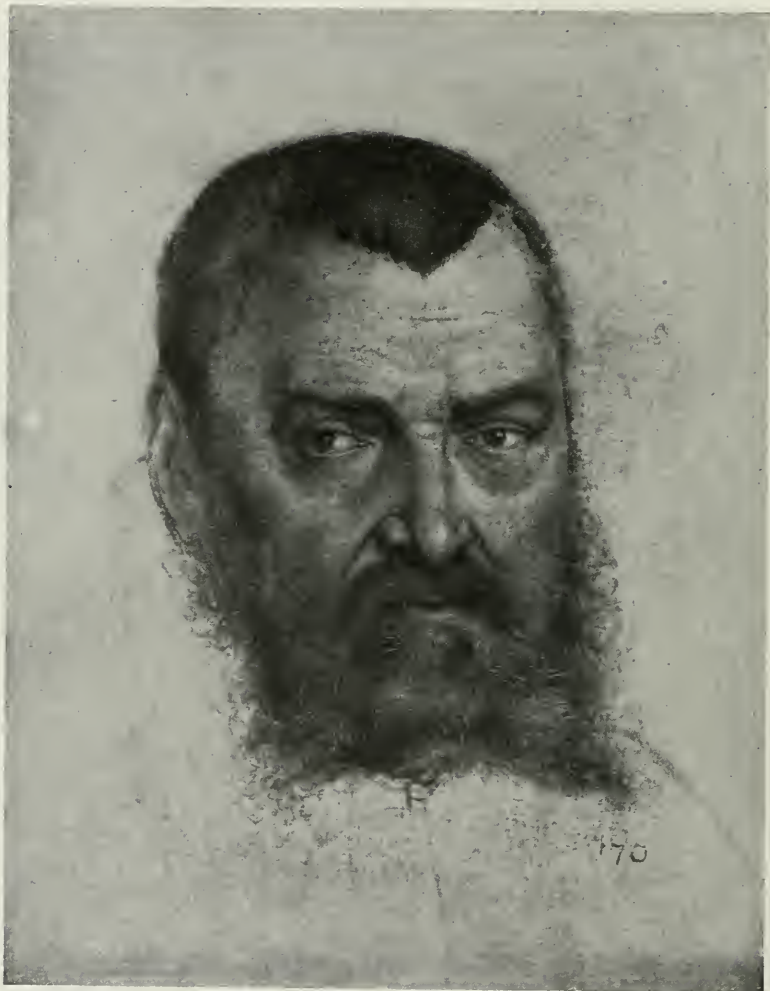


THE CRUCIFIXION: Triptych, Center Panel
Stadt-Kirche, Weimar



THE UNIVERSITY PRINTS
BOSTON

LUCAS CRANACH, THE ELDER. 1472—1553
GERMAN SCHOOL



PORTRAIT OF GEORG VON BRANDENBURG: Sketch
Gallery, Dresden



THE UNIVERSITY PRINTS
BOSTON

LUCAS CRANACH, THE ELDER. 1472—1553
GERMAN SCHOOL



PORTRAIT OF DR. JEAN SCHEURING

Royal Gallery, Brussels



THE UNIVERSITY PRINTS
BOSTON

LUCAS CRANACH, THE ELDER. 1472 - 1553
GERMAN SCHOOL



ST. GEORGE; ADORATION OF THE MAGI; ST. MAURITIUS
Alte Pinakothek, Munich

THE UNIVERSITY PRINTS
BOSTON



HANS BALDUNG GRIEN. c. 1475 — 1545
GERMAN SCHOOL



DEATH AND THE LADY
Museum, Basle



THE UNIVERSITY PRINTS
BOSTON

HANS BALDUNG GRIEN. c. 1475—1545
GERMAN SCHOOL



BURGMAYER AND HIS WIFE
Imperial Gallery, Vienna



THE UNIVERSITY PRINTS
BOSTON

HANS BURGMAYER, THE ELDER. 1473—1531
GERMAN SCHOOL



MADONNA AND CHILD
Germanic Museum, Nuremberg



THE UNIVERSITY PRINTS
BOSTON

HANS BURGMMAIR, THE ELDER. 1473--1531
GERMAN SCHOOL



TAKING THE BODY OF ST. QUIRINUS FROM THE WATER
Germanic Museum, Nuremberg



THE UNIVERSITY PRINTS
BOSTON

ALBRECHT ALTDORFER. c. 1488—1538
GERMAN SCHOOL



THE REPOSE IN EGYPT
Kaiser Friedrich Museum, Berlin



ST. ERASMUS AND ST. MAURITIUS

Alte Pinakothek, Munich



THE UNIVERSITY PRINTS
BOSTON

MATTHIAS GRÜNEWALD. fl. 1518 — 1530?
GERMAN SCHOOL



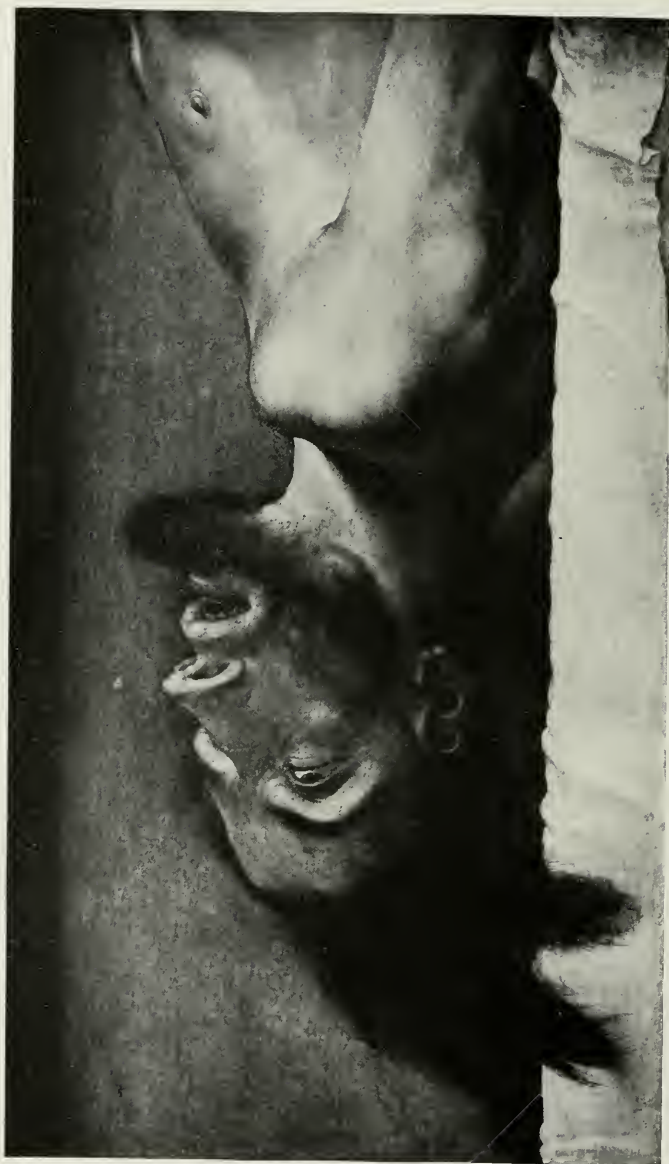
PORTRAIT OF BONIFACE AMERBACH

Museum, Basle



THE UNIVERSITY PRINTS
BOSTON

HANS HOLBEIN, THE YOUNGER. 1497 — 1543
GERMAN SCHOOL



THE DEAD CHRIST
Museum, Basle

HANS HOLBEIN, THE YOUNGER. 1497—1543
GERMAN SCHOOL



THE UNIVERSITY PRINTS
BOSTON



PORTRAIT OF ERASMUS

Louvre, Paris



THE UNIVERSITY PRINTS
BOSTON

HANS HOLBEIN, THE YOUNGER. 1497—1543
GERMAN SCHOOL



MADONNA OF BURGOMASTER MEYER
Museum, Darmstadt



THE UNIVERSITY PRINTS
BOSTON

HANS HOLBEIN, THE YOUNGER. 1497—1543
GERMAN SCHOOL



MADONNA OF BURGOMASTER MEYER: Copy
Gallery, Dresden



THE UNIVERSITY PRINTS
BOSTON

HANS HOLBEIN, THE YOUNGER. 1497—1543
GERMAN SCHOOL



HOLBEIN'S WIFE AND CHILDREN
Museum, Basle



THE UNIVERSITY PRINTS
BOSTON

HANS HOLBEIN, THE YOUNGER. 1497—1543
GERMAN SCHOOL



PORTRAIT OF GEORG GISZE
Kaiser Friedrich Museum, Berlin



THE UNIVERSITY PRINTS
BOSTON

HANS HOLBEIN, THE YOUNGER. 1497—1543
GERMAN SCHOOL



THE AMBASSADORS
National Gallery, London



THE UNIVERSITY PRINTS
BOSTON

HANS HOLBEIN, THE YOUNGER, 1497—1543
GERMAN SCHOOL



PORTRAIT OF ROBERT CHESEMAN, WITH FALCON
Mauritshuis, The Hague

HANS HOLBEIN, THE YOUNGER. 1497 — 1543
GERMAN SCHOOL



THE UNIVERSITY PRINTS
BOSTON



PORTRAIT OF JANE SEYMOUR
Imperial Gallery, Vienna



THE UNIVERSITY PRINTS
BOSTON

HANS HOLBEIN, THE YOUNGER. 1497—1543
GERMAN SCHOOL



PORTRAIT OF HUBERT MORETT
Gallery, Dresden



THE UNIVERSITY PRINTS
BOSTON

HANS HOLBEIN, THE YOUNGER. 1497—1543
GERMAN SCHOOL



PORTRAIT OF CHRISTINA, PRINCESS OF DENMARK
National Gallery, London



THE UNIVERSITY PRINTS
BOSTON

HANS HOLBEIN, THE YOUNGER. 1497—1543
GERMAN SCHOOL



HEAD OF MELANCHTHON: Drawing
Royal Collection, Windsor



THE UNIVERSITY PRINTS
BOSTON

HANS HOLBEIN, THE YOUNGER. 1497—1543
GERMAN SCHOOL



PORTRAIT STUDY OF CLINTON: Drawing
Royal Collection, Windsor



THE UNIVERSITY PRINTS
BOSTON

HANS HOLBEIN, THE YOUNGER. 1497—1543
GERMAN SCHOOL



PORTRAITS OF SCHWETZER AND HIS WIFE

Kaiser Friedrich Museum, Berlin

GEORG PEN CZ. d. 1500—1550
GERMAN SCHOOL



THE UNIVERSITY PRINTS
BOSTON



PORTRAIT OF A MAN
National Gallery, London



THE UNIVERSITY PRINTS
BOSTON

CHRISTOPH AMBERGER. c. 1500—1561?
GERMAN SCHOOL



PORTRAIT OF SEBASTIAN MÜNSTER

Kaiser Friedrich Museum, Berlin



THE UNIVERSITY PRINTS
BOSTON

CHRISTOPH AMBERGER. c. 1500—1561?
GERMAN SCHOOL



PORTRAIT OF A YOUTH
Liechtenstein, Vienna



THE UNIVERSITY PRINTS
BOSTON

HEINRICH ALDEGREVER. c. 1502—1558?
GERMAN SCHOOL



ST. CRISPIN AND ST. CRISPIANUS
Kaiser Friedrich Museum, Berlin



THE UNIVERSITY PRINTS
BOSTON

BARTEL BEHAM. 1502—1540
GERMAN SCHOOL



PORTRAIT OF MARIA JOSEFA, ARCHDUCHESS OF AUSTRIA
Prado, Madrid



THE UNIVERSITY PRINTS
BOSTON

ANTON RAPHAEL MENGS. 1728—1774
GERMAN SCHOOL



PORTRAIT OF LOUIS DE SILVESTRE
Gallery, Dresden



THE UNIVERSITY PRINTS
BOSTON

ANTON RAPHAEL MENGES. 1728—1774
GERMAN SCHOOL



PARNASSUS
Villa Albani, Rome

ANTON RAPHAEL MENGS. 1728—1774
GERMAN SCHOOL



THE UNIVERSITY PRESS
BOSTON

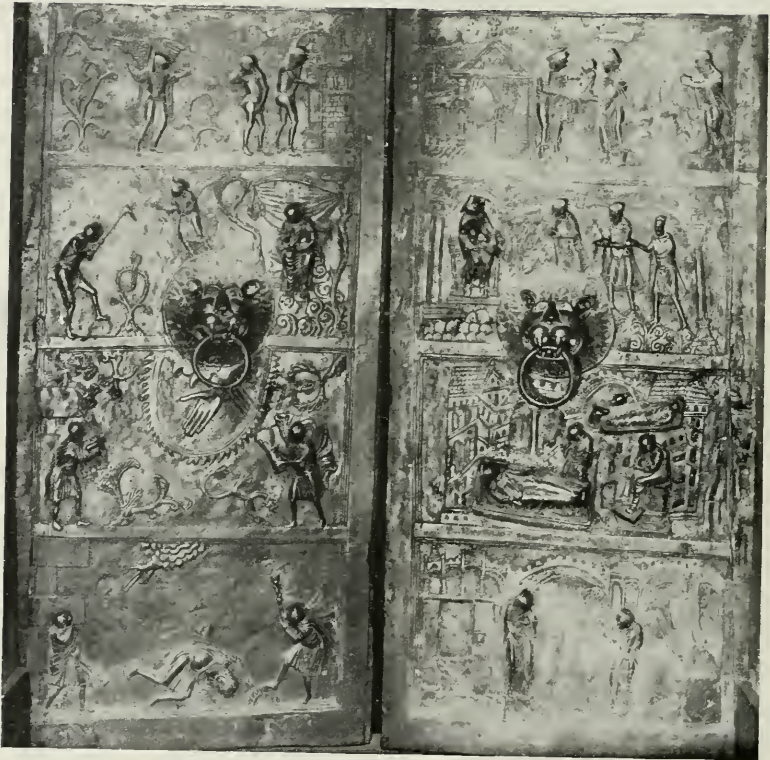


UPPER HALF OF BRONZE DOORS
Cathedral, Hildesheim



THE UNIVERSITY PRINTS
BOSTON

BISHOP BERNWARD. XI. CENTURY
GERMAN SCULPTURE



LOWER HALF OF BRONZE DOORS
Cathedral, Hildesheim



THE UNIVERSITY PRINTS
BOSTON

BISHOP BERNWARD. XI. CENTURY
GERMAN SCULPTURE



BAPTISMAL FONT
Cathedral, Hildesheim



THE UNIVERSITY PRINTS
BOSTON

XIII. CENTURY
GERMAN SCULPTURE



THE ARCHANGEL MICHAEL
Choir, Cathedral, Bamberg



THE UNIVERSITY PRINTS
BOSTON

XIII. CENTURY
GERMAN SCULPTURE

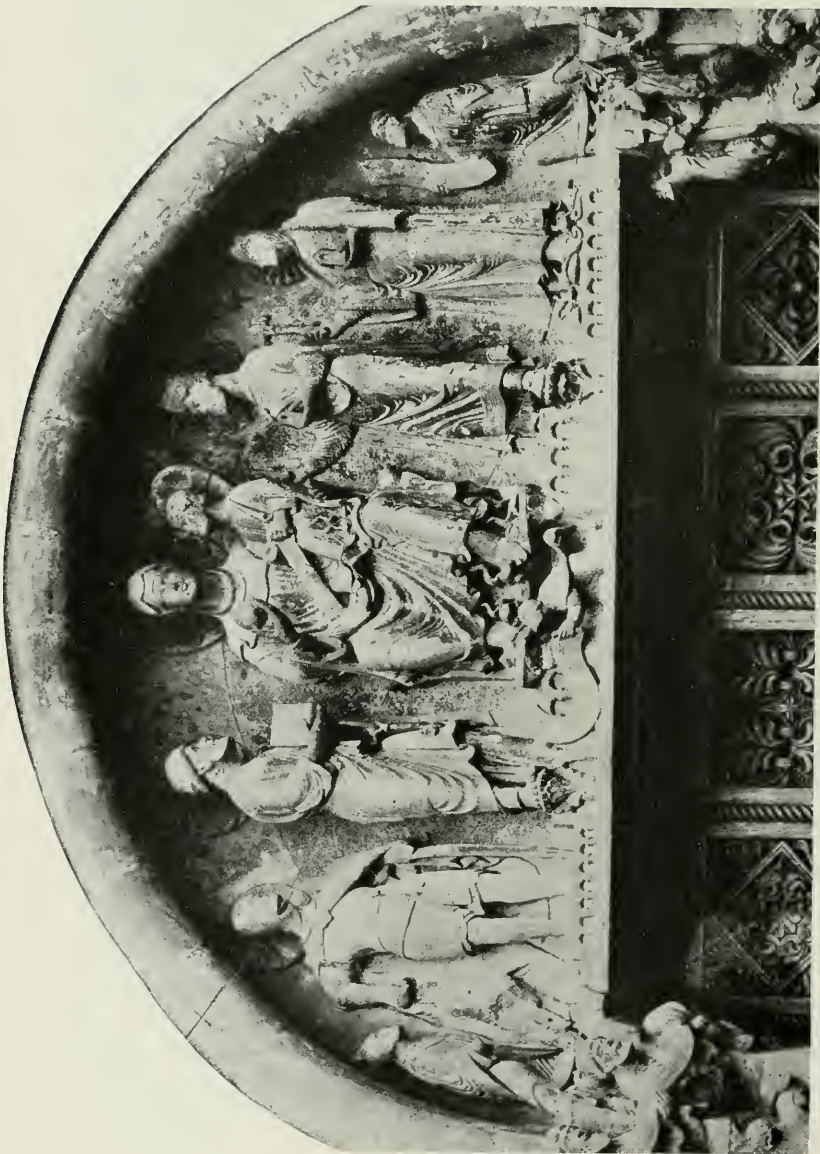


EQUESTRIAN STATUE OF CONRAD III.?
Cathedral, Bamberg



THE UNIVERSITY PRINTS
BOSTON

XIII. CENTURY
GERMAN SCULPTURE



WORSHIP OF THE VIRGIN
North Portal, Cathedral, Bamberg

XIII. CENTURY
GERMAN SCULPTURE



THE UNIVERSITY PRINTS
BOSTON



THE SYNAGOGUE; THE CHURCH
Principal Portal, Cathedral, Bamberg



THE UNIVERSITY PRINTS
BOSTON

XIII. CENTURY
GERMAN SCULPTURE



COUNT EKKEHARD AND COUNTESS UTA
Cathedral, Naumburg



THE UNIVERSITY PRINTS
BOSTON

XIII. CENTURY
GERMAN SCULPTURE



A CANONESS
Cathedral, Naumburg



THE UNIVERSITY PRINTS
BOSTON

XIII. CENTURY
GERMAN SCULPTURE

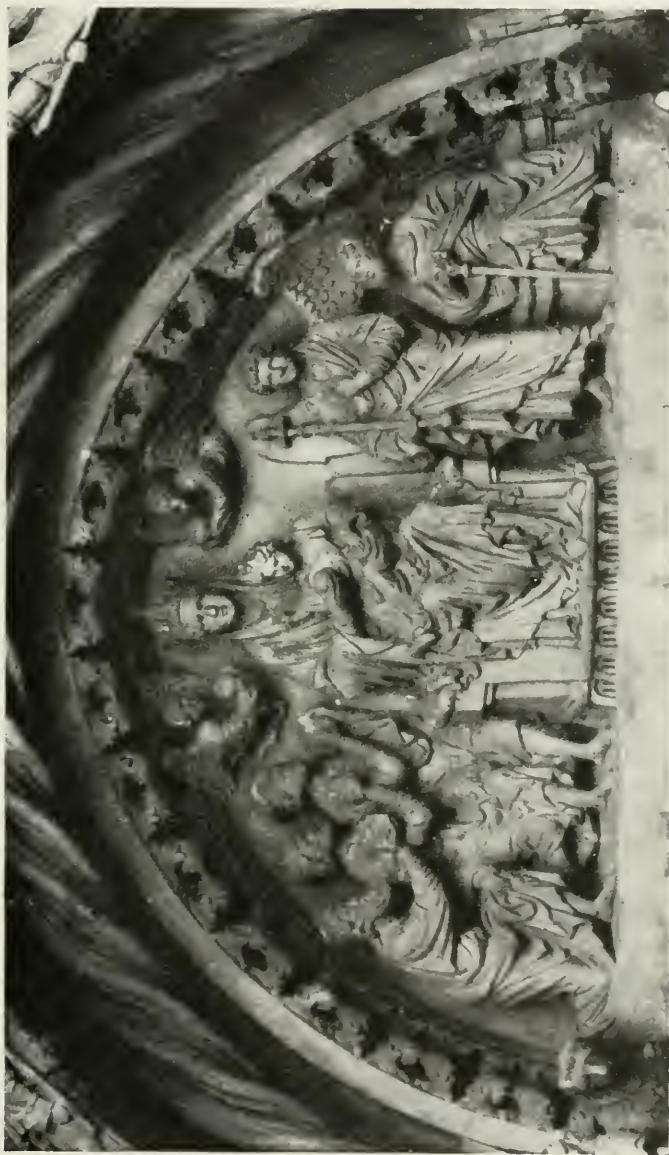


TOMB OF HENRY THE LION AND HIS CONSORT, MATILDA
Cathedral, Brunswick



THE UNIVERSITY PRINTS
BOSTON

XIII. CENTURY
GERMAN SCULPTURE



ADORATION OF THE MAGI
Golden Gate, Cathedral, Freiberg

XIII. CENTURY
GERMAN SCULPTURE



THE UNIVERSITY PRINTS
BOSTON



CHRIST BETWEEN MARY AND JOHN : ABRAHAM'S SACRIFICE
Pulpit, Castle Chapel, Weichselburg

XIII. CENTURY
 GERMAN SCULPTURE



THE UNIVERSITY PRINTS
 BOSTON



MOSES; CHRIST BETWEEN MARY AND JOHN
Pulpit, Castle Chapel, Wechselburg



THE UNIVERSITY PRINTS
BOSTON

XIII. CENTURY
GERMAN SCULPTURE



FIGURES FROM SOUTH PORTAL
West Façade, Cathedral, Strasburg



THE UNIVERSITY PRINTS
BOSTON

XIII. CENTURY
GERMAN SCULPTURE



FIGURES FROM NORTH PORTAL
West Façade, Cathedral, Strasburg

THE UNIVERSITY PRINTS
BOSTON



XIII. CENTURY
GERMAN SCULPTURE



SCENES FROM THE LIFE OF CHRIST
Principal Portal, Cathedral, Strasburg



THE UNIVERSITY PRINTS
BOSTON

XIII. CENTURY
GERMAN SCULPTURE



THE DEATH OF MARY

South Portal, Cathedral, Strasburg

XIII. CENTURY
GERMAN SCULPTURE



THE UNIVERSITY PRINTS
BOSTON

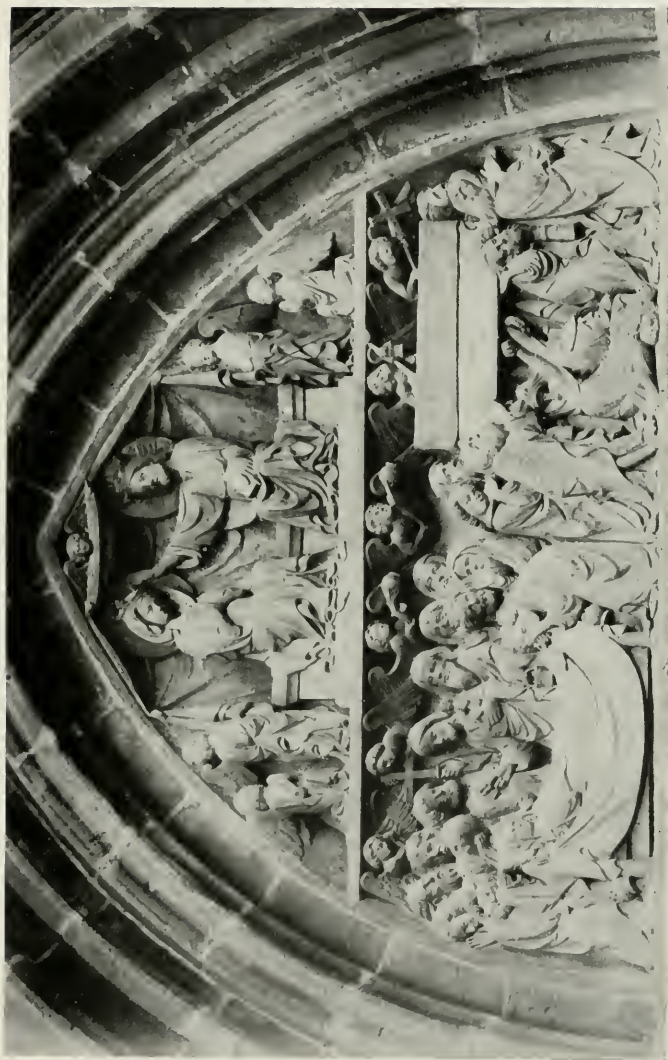


ST. BARTHOLOMEW
Germanic Museum, Nuremberg



THE UNIVERSITY PRINTS
BOSTON

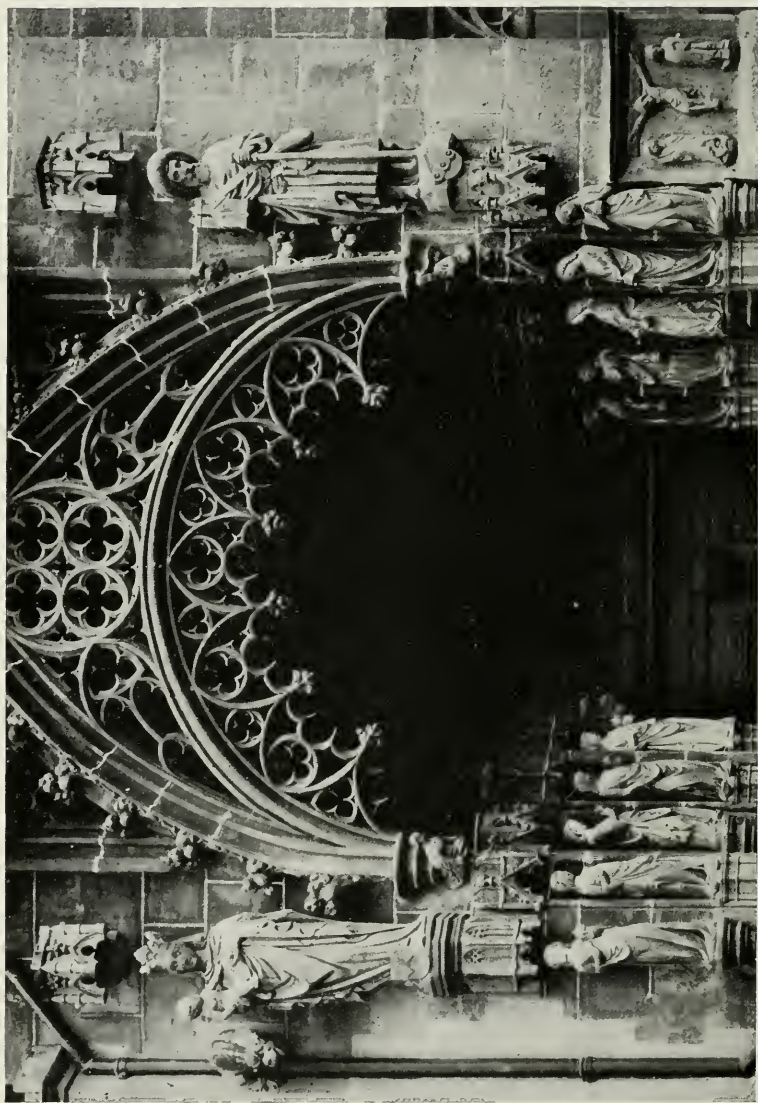
XIV. CENTURY
GERMAN SCULPTURE



THE DEATH AND BURIAL OF MARY
Northwest Portal, S. Sebaldus, Nuremberg

THE UNIVERSITY PRINTS
BOSTON

XIV. CENTURY
GERMAN SCULPTURE



VIRGIN AND CHILD; ST. SEBALD; THE WISE AND FOOLISH VIRGINS
Bride's Door, S. Sebaldus, Nuremberg



THE UNIVERSITY PRINTS
BOSTON

XIV. CENTURY
GERMAN SCULPTURE

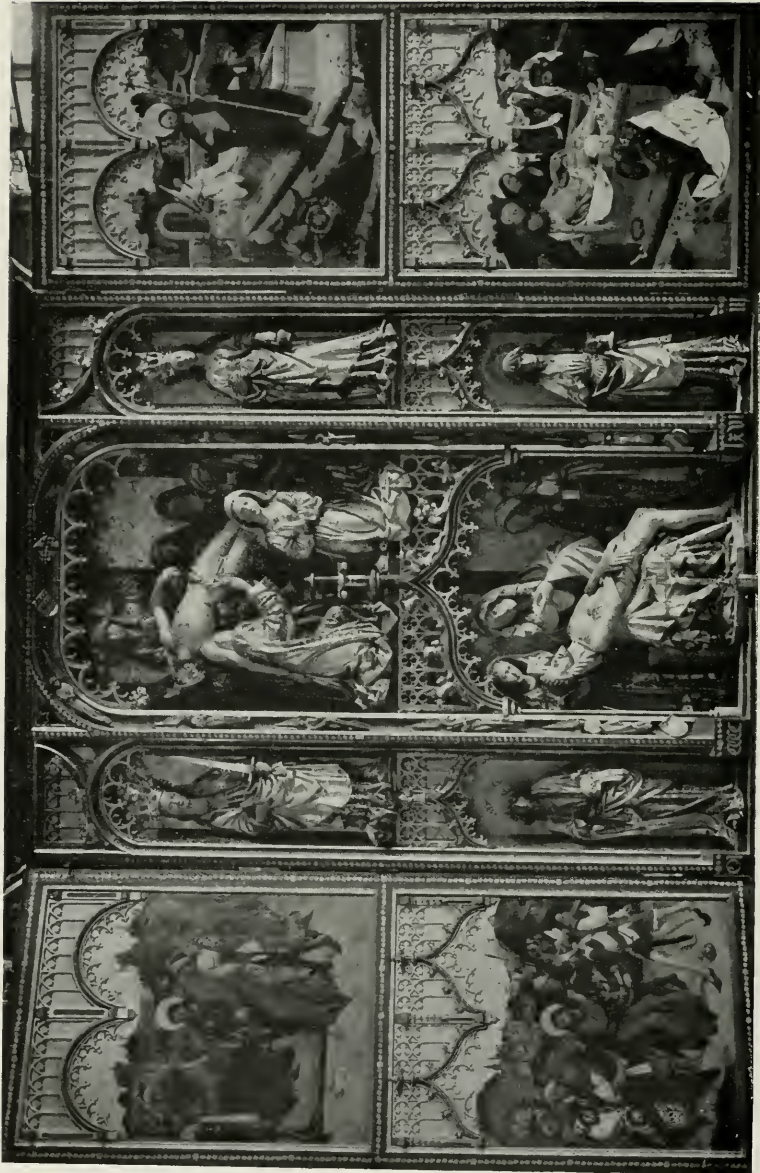


MARY ENTHRONED, WITH ST. ULRICH AND ST. CONRAD, INTRODUCING DONORS
Museum, Augsburg



THE UNIVERSITY PRINTS
BOSTON

XV. CENTURY
GERMAN SCULPTURE



SCENES FROM THE PASSION
High Altar, Abbey Church, Tiefenbrunn

HANS SCHÜLEIN. fl. 1468 — 1502
GERMAN SCULPTURE



THE UNIVERSITY PRESS
BOSTON



THE BAPTISM OF CHRIST
S. Florian, Cracow


THE UNIVERSITY PRINTS
BOSTON

VEIT STOSS. 1440—1533?
GERMAN SCULPTURE



THE CORONATION OF MARY
Castle Chapel, Nuremberg



THE UNIVERSITY PRINTS
BOSTON

VEIT STOSS. 1440—1533?
GERMAN SCULPTURE



THE ANGEL'S GREETING
S. Lorenz, Nuremberg



THE UNIVERSITY PRINTS
BOSTON

VEIT STOSS. 1440—1533?
GERMAN SCULPTURE



SECOND STATION OF THE CROSS

Nuremberg

THE UNIVERSITY PRINTS
BOSTON

ADAM KRAFFT. 1440?—1507
GERMAN SCULPTURE



SIXTH STATION OF THE CROSS

Nuremberg

THE UNIVERSITY PRINTS
BOSTON

ADAM KRAFFT, 1440?—1507
GERMAN SCULPTURE



SEVENTH STATION OF THE CROSS
Nuremberg

THE UNIVERSITY PRINTS
BOSTON



ADAM KRAFFT, 1440?—1507
GERMAN SCULPTURE



SCENES FROM THE PASSION
Schreyer Tomb, S. Sebaldus, Nuremberg

ADAM KRAFFT, 1440?—1507
GERMAN SCULPTURE



THE UNIVERSITY PRINTS
BOSTON



RELIEF OVER GATE
Civic Weighing-house, Nuremberg



THE UNIVERSITY PRINTS
BOSTON

ADAM KRAFFT. 1440?—1507
GERMAN SCULPTURE

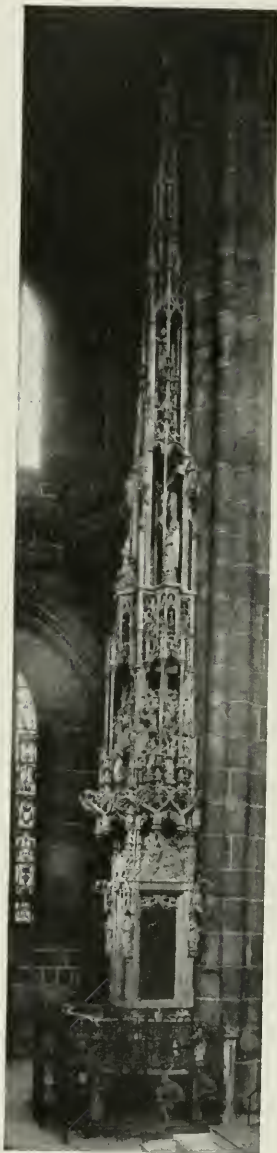


MARY, THE MOTHER OF MERCY: Pergenstorfer Tomb
Frauenkirche, Nuremberg



THE UNIVERSITY PRINTS
 BOSTON

ADAM KRAFFT. 1440?—1507
 GERMAN SCULPTURE



CIBORIUM
S. Lorenz, Nuremberg



THE UNIVERSITY PRINTS
BOSTON

ADAM KRAFFT, 1440?—1507
GERMAN SCULPTURE



THE LAST SUPPER

Altar of the Holy Blood, S. James, Rothenburg



THE UNIVERSITY PRINTS
BOSTON

TILMAN RIEMENSCHNEIDER. 1460?—1531
GERMAN SCULPTURE



ADAM AND EVE
South Portal, Marienkapelle, Würzburg



THE UNIVERSITY PRINTS
BOSTON

TILMAN RIEMENSCHNEIDER. 1460?—1531
GERMAN SCULPTURE

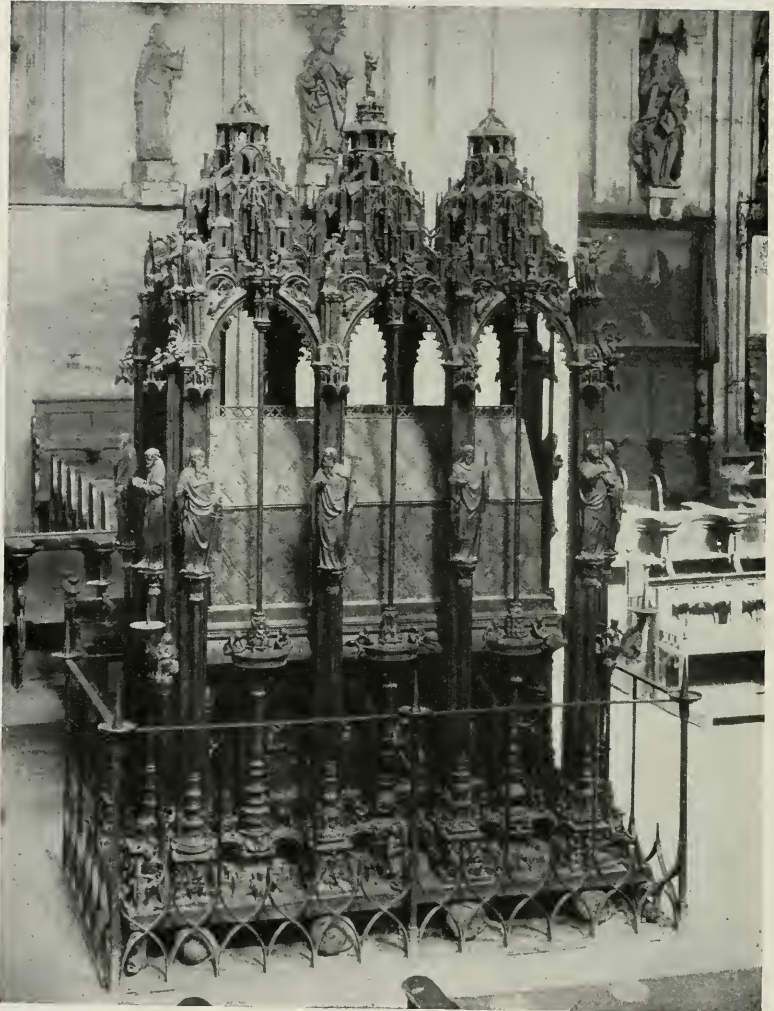


TOMB OF BISHOP RUDOLPH VON SCHERENBERG
Cathedral, Würzburg



THE UNIVERSITY PRINTS
BOSTON

TILMAN RIEMENSCHNEIDER. 1460?—1531
GERMAN SCULPTURE



SHRINE OF ST. SEBALD
S. Sebaldus, Nuremberg



THE UNIVERSITY PRINTS
BOSTON

PETER VISCHER, THE ELDER. 1455—1529
GERMAN SCULPTURE



PETER VISCHER: Detail, Shrine of St. Sebald
S. Sebaldus, Nuremberg



THE UNIVERSITY PRINTS
BOSTON

PETER VISCHER, THE ELDER. 1455—1529
GERMAN SCULPTURE



ST. JOHN THE EVANGELIST: Detail, Shrine of St. Sebald
S. Sebaldus, Nuremberg



THE UNIVERSITY PRINTS
BOSTON

PETER VISCHER, THE ELDER. 1455—1529
GERMAN SCULPTURE

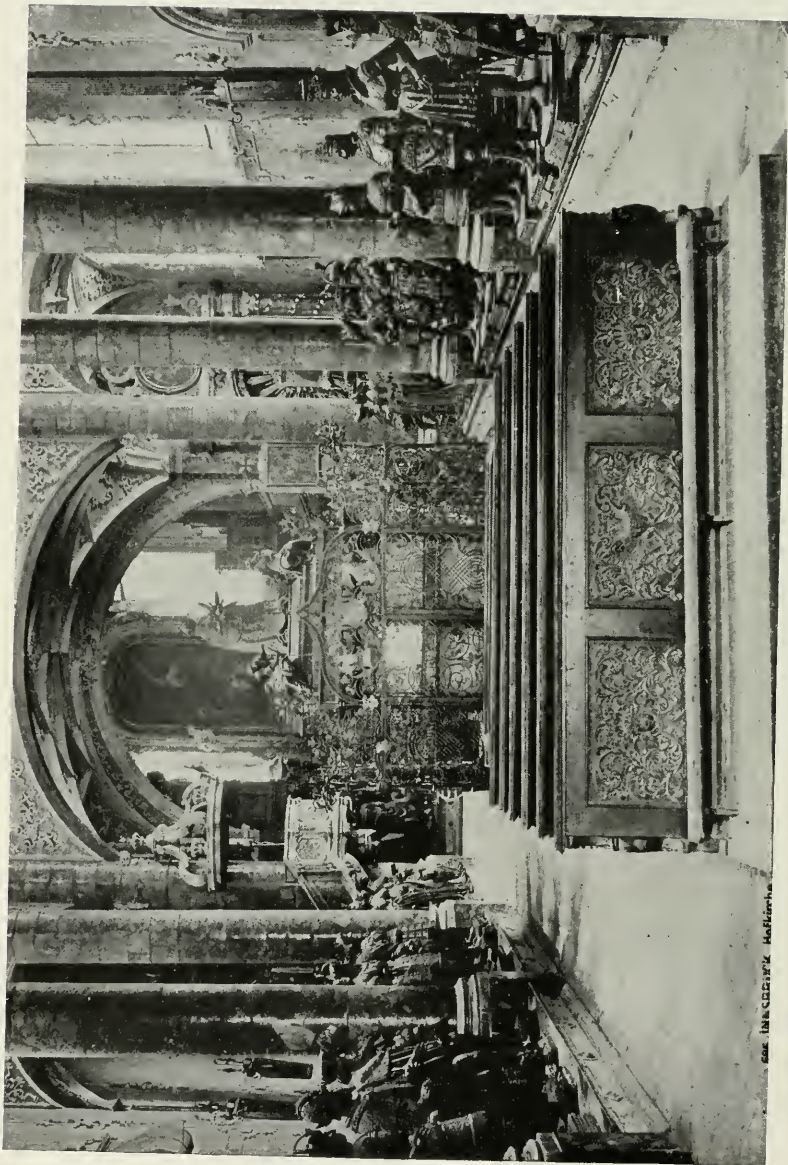


ST. JAMES: Detail, Shrine of St. Sebald
S. Sebaldus, Nuremberg



THE UNIVERSITY PRINTS
BOSTON

PETER VISCHER, THE ELDER. 1455—1529
GERMAN SCULPTURE

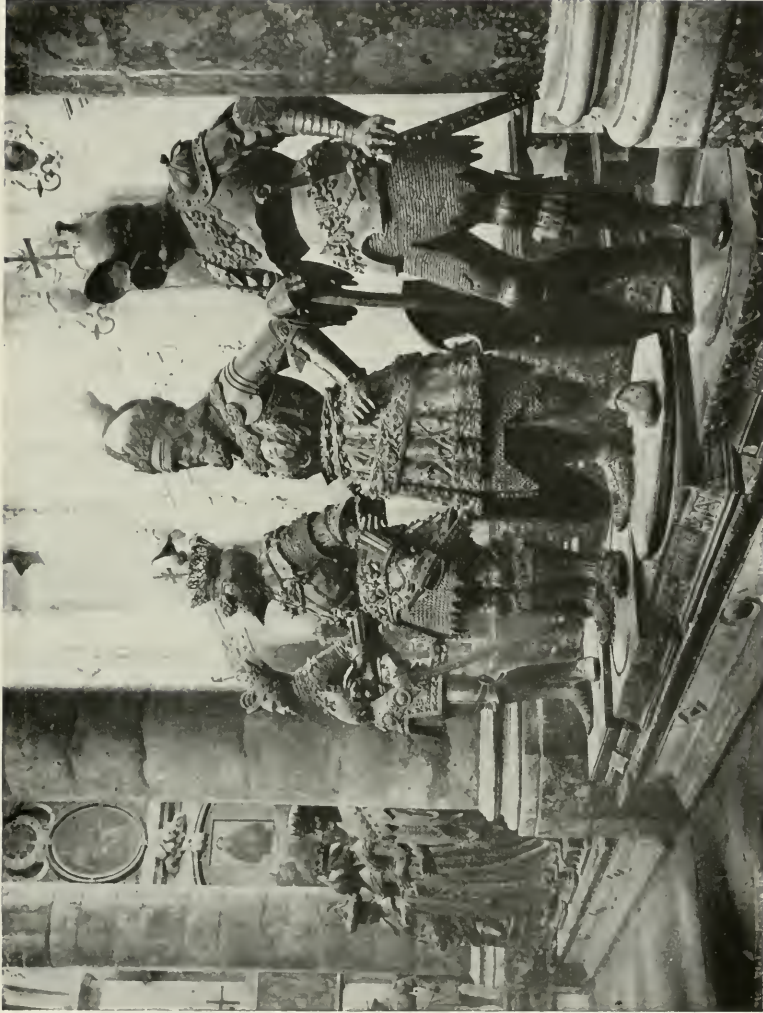


MONUMENT OF MAXIMILIAN
Court Church, Innsbruck

PETER VISCHER AND OTHERS. XVI. CENTURY
GERMAN SCULPTURE



THE UNIVERSITY PRINTS
BOSTON

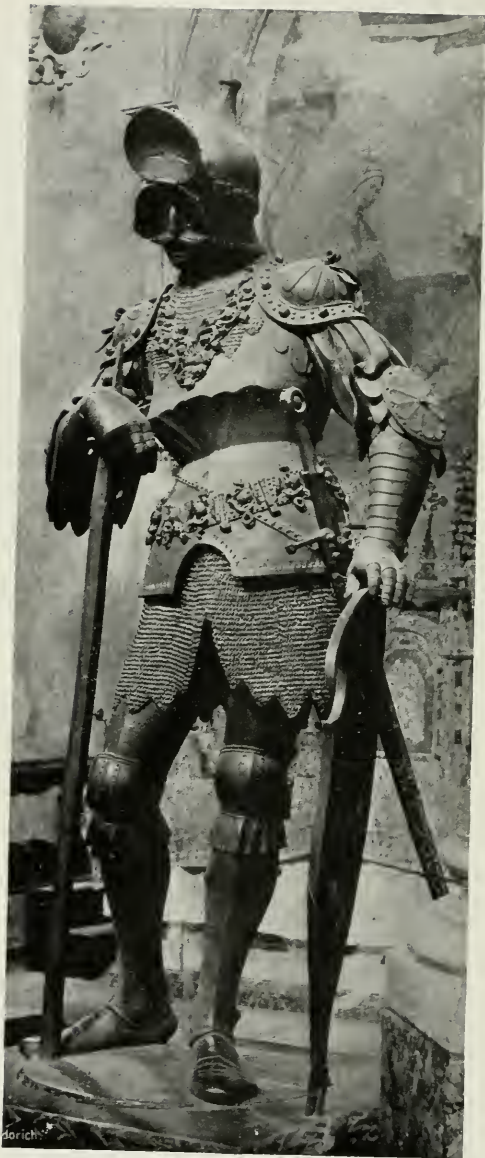


STATUES OF ANCESTORS: Detail, Monument of Maximilian
Court Church, Innsbruck

THE UNIVERSITY PRINTS
BOSTON



PETER VISCHER AND OTHERS, XVI. CENTURY
GERMAN SCULPTURE



THEODORIC: Detail, Monument of Maximilian
Court Church, Innsbruck



THE UNIVERSITY PRINTS
BOSTON

PETER VISCHER AND OTHERS. XVI. CENTURY
GERMAN SCULPTURE

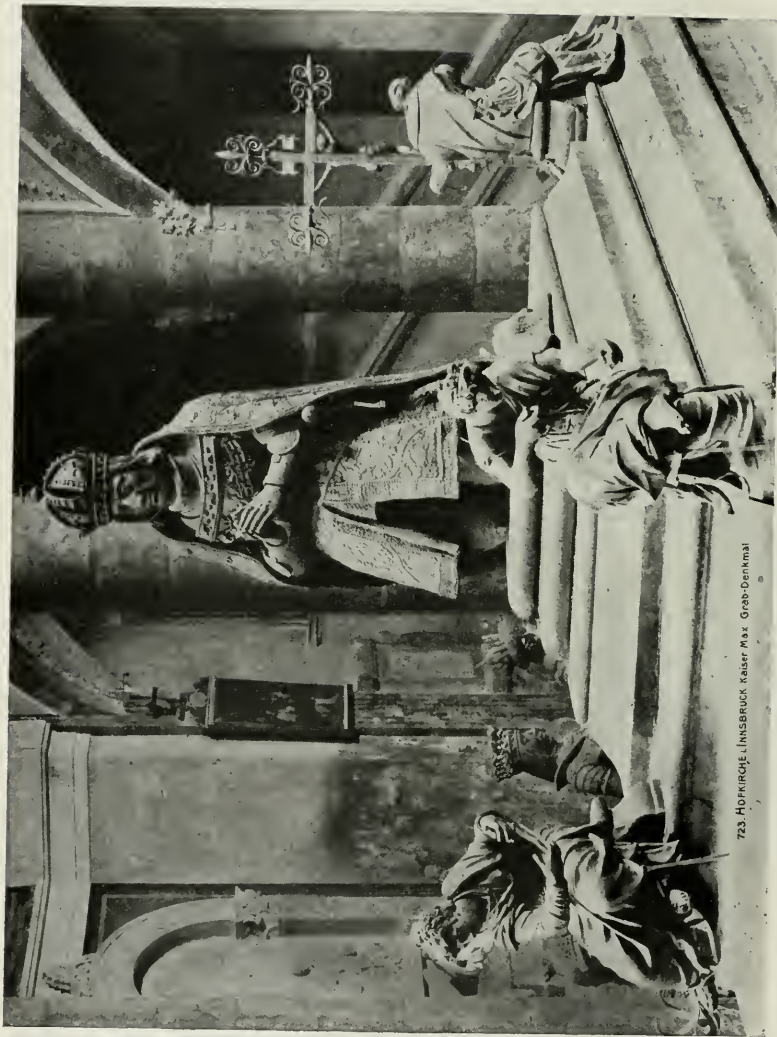


KING ARTHUR: Detail, Monument of Maximilian
Court Church, Innsbruck



THE UNIVERSITY PRINTS
BOSTON

PETER VISCHER AND OTHERS. XVI. CENTURY
GERMAN SCULPTURE



723. HOFKIRCHE, INNSBRUCK. Kaiser Max. Grab-Denkmal

STATUE OF EMPEROR MAXIMILIAN I.: Detail, Monument of Maximilian
Court Church, Innsbruck



THE UNIVERSITY PRINTS
BOSTON

PETER VISCHER AND OTHERS. XVI. CENTURY
GERMAN SCULPTURE



CHRIST MEETING THE SISTERS OF LAZARUS
 (Tomb Plate of Margaretha Tucher)
Cathedral, Regensburg



THE UNIVERSITY PRINTS
 BOSTON

PETER VISCHER, THE YOUNGER? 1487—1528
 GERMAN SCULPTURE



THE PRAYING MADONNA
Germanic Museum, Nuremberg



THE UNIVERSITY PRINTS
BOSTON

PETER VISCHER, THE YOUNGER? 1487—1528
GERMAN SCULPTURE



PILATE SHOWING CHRIST TO THE PEOPLE: Detail of Altarpiece
Cathedral, Schleswig



THE UNIVERSITY PRINTS
BOSTON

HANS BRÜGGEMANN. c. 1470—1528
GERMAN SCULPTURE



THE INCREDULITY OF THOMAS: Detail of Altarpiece
Cathedral, Schleswig


THE UNIVERSITY PRINTS
BOSTON

HANS BRÜGGEMANN. c. 1470—1528
GERMAN SCULPTURE



HEAD OF DYING WARRIOR: No. 2
Arsenal Court, Berlin



THE UNIVERSITY PRINTS
BOSTON

ANDREAS SCHLÜTER. 1664—1714
GERMAN SCULPTURE



HEAD OF DYING WARRIOR: No. II
Arsenal Court, Berlin



THE UNIVERSITY PRINTS
BOSTON

ANDREAS SCHLÜTER. 1664—1714
GERMAN SCULPTURE



CATALOGUE OF

The University Prints

STUDENT SERIES D

Art of
The Netherlands and Germany

BUREAU OF UNIVERSITY TRAVEL
TRINITY PLACE
BOSTON, MASS.

CHICAGO

BERLIN

PARIS

SERIES D

Art of The Netherlands and Germany

ABBREVIATIONS.

- b. . . born.
d. . . died.
c. . . about (*circa*).
fl. . . flourish.
Kais. Fried. . . Kaiser Friedrich.

PAINTING.

EARLY SCHOOL OF THE NETHERLANDS.

Hubert van Eyck. c. 1366-1426.

Jan van Eyck. c. 1382-1440.

PLATE.

- 1 . . . The Ghent Altarpiece.
2 . . . Christ Enthroned; the Virgin; John the
 Baptist: details of 1 St. Bavon, Ghent
3 . . . Singing Angels: detail of 1 Kais. Fried. Museum, Berlin
4 . . . St. Cecilia: detail of 1. Kais. Fried. Museum, Berlin
5 . . . Adam and Eve: details of 1 Museum, Brussels
6 . . . Adoration of the Lamb: detail of 1 St. Bavon, Ghent
7 . . . Judges; Champions of Christ; Pilgrims; Hermits:
 details of 1 Kais. Fried. Museum, Berlin
8 . . . Annunciation: details of 1. Kais. Fried. Museum, Berlin
9 . . . Jodocus and Isabella Vydt: details of 1.
 Kais. Fried. Museum, Berlin
Hubert van Eyck.
10 . . . Holy Women at the Sepulchre.
 Collection of Sir Francis Cook, Richmond

Jan van Eyck.

- 11 . . Virgin and Donor Louvre, Paris
 12 . . Man with Pinks Kais. Fried. Museum, Berlin
 13 . . Jean Arnolfini and Wife National Gallery, London
 14 . . Madonna and Child: Center of Triptych Gallery, Dresden
 15 . . SS. Michael and Catharine: Wings of 14.
 16 . . Madonna with SS. Donatian and George Academy, Bruges
 17 . . Canon van der Paele: detail of 16.
 18 . . St. Barbara: Drawing Museum, Antwerp
 19 . . Triumph of the Church (copy) Prado, Madrid

Roger van der Weyden. 1400-1464.

- 20 . . Adoration of the Magi: Center of
 Triptych Alte Pinakothek, Munich
 21 . . Annunciation: Presentation: Wings of 20.
 22 . . Altar of Charles V. Kais. Fried. Museum, Berlin
 23 . . Beheading of John the Baptist Kais. Fried. Museum, Berlin
 24 . . Descent from the Cross Prado, Madrid
 25 . . St. Luke painting the Virgin Louvre, Paris
 26 . . A Man and his Wife. (School of Van der Weyden).
 National Gallery, London

Aelbert van Ouwater. fl. 1430-1460.

- 27 . . Raising of Lazarus Kais. Fried. Museum, Berlin

Dutch Master. c. 1470.

- 28 . . Madonna, with Saints and Donor Kais. Fried. Museum, Berlin

Petrus Cristus. c. 1400-1473?

- 29 . . Annunciation Prado, Madrid
 30 . . A Lady of the Talbot Family Kais. Fried. Museum, Berlin
 31 . . Legend of St. Eligius Oppenheim Collection, Cologne

Dierick Bouts. d. 1475.

- 32 . . Feast of the Passover Kais. Fried. Museum, Berlin
 33 . . Judgment of King Otho Museum, Brussels
 34 . . Detail, Decapitation of the Earl Museum, Brussels

Justus of Ghent. b. 1410?

- 35 . . The Last Supper Municipal Gallery, Urbino

Hans Memling. c. 1430-1494.

- 36 . . Adoration of the Magi: Center of Triptych.
St. John's Hospital, Bruges
- 37 . . Nativity: Presentation: Wings of 36 (inside).
- 38 . . John the Baptist: St. Veronica: Wings of 36 (outside).
- 39 . . Shrine of St. Ursula St. John's Hospital, Bruges
- 40 . . Arrival at Cologne: detail of 39.
- 41 . . Return to Basle: detail of 39.
- 42 . . Martyrdom of the Saint: detail of 39.
- 43 . . Martin Nieuwenhove St. John's Hospital, Bruges
- 44 . . Madonna of the Apple St. John's Hospital, Bruges
- 45 . . Madonna, Angel and Donor Imperial Gallery, Vienna
- 46 . . John the Baptist: St. Jerome Cathedral, Lübeck

Hugo van der Goes. c. 1435-1482.

- 47 . . Adoration of the Shepherds: Center of Portinari
Altarpiece Uffizi, Florence
- 48 . . Donors, with Patron Saints: Wings of 47.

Gerard van der Meire. 1450?-1512.

(Attributed.)

- 49 . . Christ bearing the Cross: Center of Triptych Museum, Antwerp
- 50 . . Presentation: Christ among the Doctors: Wings of 49.

Hieronymus van Aeken (Bosch). 1462?-1516.

- 51 . . Temptation of St. Anthony Museum, Brussels

Gheeraert David. 1450?-1523.

- 52 . . The Marriage at Cana Louvre, Paris
- 53 . . Baptism of Christ: Center of Triptych Academy, Bruges
- 54 . . Donor and First Wife: Wings of 53 (inside).
- 55 . . Virgin and Child: Donor's Second Wife: Wings of 53 (outside).
- 56 . . Canon and Patron Saints National Gallery, London

Quentin Metsys. 1466-1530?

- 57 . . Life of St. Anne: Center of Triptych Museum, Brussels
- 58 . . Life of St. Anne: Wings of 57 (inside).
Death of St. Anne.
Announcement of the Birth of the Virgin.

- 59 . Life of St. Anne: Wings of 57 (outside).
 Marriage Offerings of SS. Joachim and Anne.
 Expulsion of St. Joachim from the Temple.
- 60 . Group of Heads: detail, Expulsion of St. Joachim.
- 61 . Preparing Christ for Burial: Center of
 Triptych Museum, Antwerp
- 62 . Martyrdom of John the Baptist and John the Evangelist: Wings
 of 61.
- 63 . Madonna and Child Kais. Fried. Museum, Berlin
- 64 . Mary Magdalen with Jar of Spikenard Museum, Antwerp
- 65 . Banker and His Wife Louvre, Paris
- 66 . Portrait of an Unknown Man Liechtenstein, Vienna

SCHOOL OF THE NETHERLANDS.

Jan Gossaert (Mabuse). 1470 ?-1541.

- 67 . Ecce Homo Museum, Antwerp
- 68 . A Man with Rosary National Gallery, London
- 69 . Jean Carondelet Louvre, Paris
- 70 . Madonna Enthroned: Center of Triptych Museum, Palermo
- 71 . SS. Catherine and Dorothea: Wings of 70.
 (Attribution of 70 and 71 is questioned.)

Jan Mostaert. c. 1474-1555.

(Attributed.)

- 72 . Deipara Virgo Museum, Antwerp
- 73 . Portrait of a Man Museum, Antwerp

Jacob Cornelisz van Oostanen. 1470 ?-1533.

- 74 . Madonna, Saints, and Donors Kais. Fried. Museum, Berlin

Lucas van Leyden. 1494-1533.

- 75 . The Chess Players Kais. Fried. Museum, Berlin
- 76 . St. Jerome Kais. Fried. Museum, Berlin
- 77 . Adoration of the Magi Museum, Antwerp

Maertin van Heemskerck (van Veen). 1494?-1574.

- 78 . The Artist's Father Metropolitan Museum, New York
- 79 . Momus criticising the Works of the Gods.
 Kais. Fried. Museum, Berlin

Jan van Scorel. 1495?-1562.

- 80 . Anna van Schoenhove Kais. Fried. Museum, Berlin
 81 . Portrait of a Lady National Gallery, London
 82 . David killing Goliath Gallery, Dresden

Joachim Patinir. d. 1548?

- 83 . . Repose in Egypt Museum, Brussels

Herri met de Bles (Civetta). 1480?-1550?

- 84 . . Esther before Ahasuerus Pinacoteca, Bologna
 85 . Portrait of a Man Kais. Fried. Museum, Berlin

Bernaert van Orley. c. 1490-1542.

- 86 . . Magdalen Reading National Gallery, London
 87 . Adoration of the Magi Museum, Antwerp
 88 . Trials of Job: detail Museum, Brussels

Antonis Mor (Sir Anthony More). 1512?-1581.

- 89 . . Two Clerics Kais. Fried. Museum, Berlin
 90 . . Queen Mary of England Prado, Madrid
 91 . Portrait of a Man Gallery, Dresden

Frans Floris (Vriendt). 1518?-1570.

- 92 . . Fall of the Angels Museum. Antwerp

Pieter Brueghel, the Elder. 1530?-1569.

- 93 . Peasant Wedding Imperial Gallery, Vienna
 94 . . Parable of the Blind Men'. Louvre, Paris

Martin de Vos. 1532-1603.

- 95 . Temptation of St. Anthony: detail Museum. Antwerp

Frans Pourbus, the Elder. 1545-1580.

- 96 . Lady and Dog Gallery, Dresden

Pieter Brueghel, the Younger. 1564?-1638.

- 97 . Winter Landscape Imperial Gallery, Vienna

- 127 . . . Miracle of St. Ildefonso : Center of Triptych .
Imperial Gallery, Vienna
- 128 . . . Donors and Saints : Wings of 127 (inside).
- 129 . . . Holy Family under an Apple Tree . . . Imperial Gallery, Vienna
- 130 . . . Portrait of an Old Bishop Gallery, Dresden
- 131 . . . "Quos Ego!" Gallery, Dresden
- 132 . . . La Ronda Prado, Madrid
- 133 . . . The Judgment of Paris National Gallery, London
- 134 . . . Helena Fourment and Son Alte Pinakothek, Munich
- 135 . . . La Kermesse Louvre, Paris
- 136 . . . The Castle of Steen National Gallery, London
- 137 . . . Mercury and Argus Museum, Brussels
- 138 . . . Portrait of Rubens (1637-39) Imperial Gallery, Vienna
- 139 . . . Helena Fourment Hermitage, St. Petersburg
- 140 . . . Helena Fourment as St. Cecilia Kais. Fried. Museum, Berlin
- 141 . . . Stag Hunt. (Rubens and Snyders), Kais. Fried. Museum, Berlin

Frans Snyders. 1579-1657.

- 142 . . . Boar Hunt Kais. Fried. Museum, Berlin
- 143 . . . Lioness Attacking Boar Alte Pinakothek, Munich
- 144 . . . Dogs in the Kitchen Louvre, Paris

David Teniers, the Elder. 1582-1649.

- 145 . . . Dutch Kitchen Metropolitan Museum, New York

Gaspard de Craeyer. 1584-1669.

- 146 . . . Adoration of the Shepherds Museum, Brussels
- 147 . . . St. Augustine in Ecstasy Louvre, Paris

Cornelis de Vos 1585-1651.

- 148 . . . Family of the Artist Museum, Brussels

Jacob Jordaens. 1593-1678.

- 149 . . . The Concert Louvre, Paris
- 150 . . . Four Evangelists Louvre, Paris
- 151 . . . Atalanta and Meleager Prado, Madrid
- 152 . . . Admiral de Ruyter Louvre, Paris

*LATE FLEMISH SCHOOL.***Justus Sustermans. 1597-1681.**

- 153 . . Portrait of Galileo Uffizi, Florence
 154 . . The Son of Frederick III. Pitti, Florence

Anthony van Dyck. 1599-1641.

- 155 . . Christ crowned with Thorns Kais. Fried. Museum, Berlin
 156 . . St. Sebastian Alte Pinakothek, Munich
 157 . . Thomas de Carignan Kais. Fried. Museum, Berlin
 158 . . Portrait of a Lady. Kais. Fried. Museum, Berlin
 159 . . An Italian Nobleman Wallace Collection, London
 160 . . Cardinal Bentivoglio Pitti, Florence
 161 . . The Betrayal of Jesus Prado, Madrid
 162 . . Repose in Egypt Alte Pinakothek, Munich
 163 . . Virgin and Child, with Donors Louvre, Paris
 164 . . Sebastian Leers and Family Gallery, Cassel
 165 . . Anna Wake Mauritshuis, The Hague
 166 . . Maria Louisa de Tassis Liechtenstein, Vienna
 167 . . Cornelius van der Geest (?) National Gallery, London
 168 . . Richardot and his Son Louvre, Paris
 169 . . Lady and her Daughter Louvre, Paris
 170 . . The Bewailing Museum, Antwerp
 171 . . Christ on the Cross Museum, Antwerp
 172 . . Portrait of Van Dyck Uffizi, Florence
 173 . . Endymion Porter and Van Dyck Prado, Madrid
 174 . . David Ryckaert Prado, Madrid
 175 . . Charles I. of England Louvre, Paris
 176 . . Children of Charles I. Gallery, Dresden
 177 . . The Duke of Richmond Metropolitan Museum, New York
 178 . . Prince Rupert Imperial Gallery, Vienna
 179 . . Mary Ruthven, Wife of Van Dyck Alte Pinakothek, Munich

Simon de Vos. 1603-1676.

- 180 . . Portrait of Simon de Vos Museum, Antwerp

David Teniers, the Younger. 1610-1690.

- 181 . . Peter's Denial Louvre, Paris
 182 . . Temptation of St. Anthony Kais. Fried. Museum, Berlin
 183 . . The Seasons: Autumn; Winter National Gallery, London
 184 . . The Bagpipe Player Louvre, Paris

- 185 . . The Smoker Louvre, Paris
 186 . . Village Festival Museum, Brussels
 187 . . Sacrifice of Abraham Imperial Gallery, Vienna

Sir Peter Lely (Van der Faes). 1618-1680.

- 188 . . The Duchess of Richmond Hampton Court
 189 . . Portrait of Cromwell (attributed) Pitti, Florence

DUTCH SCHOOL.

Michiel van Miereveld. 1567-1641.

- 190 . . Portrait of a Lady Prado, Madrid
 191 . . Portrait of a Lady Metropolitan Museum, New York

Jan Ravesteyn. 1572?-1657.

- 192 . . Officers of the Guild of St. Sebastian.
 Municipal Museum, The Hague

Frans Hals. 1580?-1666.

- 193 . . Banquet of St. George's Company Town Hall, Haarlem
 194 . . Laughing Cavalier Wallace Collection, London
 195 . . Portrait of Olycan Mauritshuis, The Hague
 196 . . Portrait of a Man Kais. Fried. Museum, Berlin
 197 . . Portrait of a Lady Kais. Fried. Museum, Berlin
 198 . . Hals and his Wife Ryks Museum, Amsterdam
 199 . . Banquet of St. Andrew's Company (1627). Town Hall, Haarlem
 200 . . Fool with a Lute (copy) Ryks Museum, Amsterdam
 201 . . La Bohémienne Louvre, Paris
 202 . . Nurse and Child Kais. Fried. Museum, Berlin
 203 . . Portrait of a Woman Metropolitan Museum, New York
 204 . . Officers of St. Andrew's Company (1633) Town Hall, Haarlem
 205 . . Group of Heads: detail of 204.
 206 . . Woman with Parrot Kais. Fried. Museum, Berlin
 207 . . Portrait of a Man National Gallery, London
 208 . . Directresses of the Almshouse Town Hall, Haarlem

Gerard van Honthorst (della Notte). 1590-1656.

- 209 . . Nativity Uffizi, Florence
 210 . . Cimon and Pera Alte Pinakothek, Munich

Thomas de Keyser. 1596-1679.

- 211 . . Anatomy Lesson Ryks Museum, Amsterdam
 212 . . A Savant Mauritshuis, The Hague

Jan van Goyen. 1596-1656.

- 213 . . View of Nymwegen Kais. Fried. Museum, Berlin
 214 . . View of the Maas before Dordrecht, Ryks Museum, Amsterdam

Aart van der Neer. 1603-1677.

- 215 . . Landscape by Moonlight Mauritshuis, The Hague
 216 . . Fire in a Dutch Town Kais. Fried. Museum, Berlin

Adriaen Brouwer. 1605-1641.

- 217 . . Quarreling Gamesters Alte Pinakothek, Munich
 218 . . The Smoker Louvre, Paris
 219 . . Landscape by Moonlight Kais. Fried. Museum, Berlin

Rembrandt van Rijn. 1606-1669.

- 220 . . The Money Changer Kais. Fried. Museum, Berlin
 221 . . Study of a Head Gallery, Cassel
 222 . . Rembrandt's Father Mauritshuis, The Hague
 223 . . Presentation in the Temple Mauritshuis, The Hague
 224 . . Portraits of a Gentleman and his Wife Museum, Boston
 225 . . Dr. Tulp's Anatomy Lesson Mauritshuis, The Hague
 226 . . Group of Heads: detail of 225.
 227 . . Rembrandt's Sister Brera, Milan
 228 . . Philosopher in Meditation Louvre, Paris
 229 . . Shipbuilder and his Wife Buckingham Palace, London
 230 . . Descent from the Cross Alte Pinakothek, Munich
 231 . . Saskia Gallery, Cassel
 232 . . Rembrandt and Saskia Gallery, Dresden
 233 . . Head of Rembrandt: detail of 232.
 234 . . Portrait of Rembrandt (1635) Pitti, Florence
 235 . . Polish Nobleman Hermitage, St. Petersburg
 236 . . Portrait of Rembrandt: Etching.
 237 . . Rape of Ganymede Gallery, Dresden
 238 . . Portrait of Swalmius Museum, Antwerp
 239 . . The Angel leaving Tobias Louvre, Paris
 240 . . Landscape Ryks Museum, Amsterdam

- 241 . . . Samson's Wedding Feast Gallery, Dresden
 242 . . . Portrait of a Young Woman Gallery, Cassel
 243 . . . Rembrandt's Mother Imperial Gallery, Vienna
 244 . . . Portrait of Rembrandt (1640) National Gallery, London
 245 . . . The Carpenter's Household Louvre, Paris
 246 . . . Portrait of a Man, seated Museum, Brussels
 247 . . . Saskia holding a Pink Gallery, Dresden
 248 . . . The Night Watch Ryks Museum, Amsterdam
 249 . . . Portrait of Elizabeth Bas Ryks Museum, Amsterdam
 250 . . . Girl at the Window Gallery, Dulwich
 251 . . . Old Woman weighing Gold Gallery, Dresden
 252 . . . Abraham's Sacrifice: Etching.
 253 . . . Christ at Emmaus Louvre, Paris
 254 . . . The Ruin Gallery, Cassel
 255 . . . Christ healing the Sick: Etching.
 256 . . . Man with the Helmet Kais. Fried. Museum, Berlin
 257 . . . Portrait of a Lady Louvre, Paris
 258 . . . Entombment Gallery, Dresden
 259 . . . Woman Bathing (Bathsheba) Louvre, Paris
 260 . . . Portrait of an Old Man Gallery, Dresden
 261 . . . Jacob blessing the Sons of Joseph Gallery, Cassel
 262 . . . Portrait of Titus Wallace Collection, London
 263 . . . The Rabbi National Gallery, London
 264 . . . Nicolaes Bruynningh. Gallery, Cassel
 265 . . . Portrait of Rembrandt (1658) Imperial Gallery, Vienna
 266 . . . Old Man with Red Cap National Gallery, London
 267 . . . Young Woman at the Window Kais. Fried. Museum, Berlin
 268 . . . Syndics of the Cloth Hall Ryks Museum, Amsterdam
 269 . . . Portrait of Rembrandt (1664) National Gallery, London
 270 . . . Old Man with Pearls in his Hat Gallery, Dresden

Adriaen van Ostade. 1610-1685.

- 271 . . . Artist in his Studio Gallery, Dresden
 272 . . . Men and Women in a Village Inn Gallery, Dresden
 273 . . . Itinerant Fiddler Mauritshuis, The Hague
 274 . . . The Smoker Gallery, Dulwich

Gerard Dou. 1613-1675.

- 275 . . . Hermit in Prayer Gallery, Dresden

- 276 . . The Young Mother Mauritshuis, The Hague
 277 . . The Dropsical Woman Louvre, Paris
 278 . . The Old Schoolmaster Gallery, Dresden
 279 . . Girl chopping Onions Buckingham Palace, London

Bartholomew van der Helst. 1613-1670.

- 280 . . Banquet of Arquebusiers, celebrating
 the Peace of Westphalia Ryks Museum, Amsterdam
 281 . . Archery Prizes of the Guild of St. Sebastian Louvre, Paris
 282 . . Paul Potter Mauritshuis, The Hague
 283 . . Jan van Male Metropolitan Museum, New York

Govaert Flinck. 1615-1660.

- 284 . . Isaac blessing Jacob Ryks Museum, Amsterdam
 285 . . Arquebusiers celebrating the Peace
 of Westphalia Ryks Museum, Amsterdam

Ferdinand Bol. 1616-1680.

- 286 . . Regents of Lepers' Hospital Ryks Museum, Amsterdam
 287 . . A Mathematician Louvre, Paris
 288 . . Jacob's Dream Gallery, Dresden

Gerard ter Borch. 1617-1681.

- 289 . . A Man in Black National Gallery, London
 290 . . The Gallant Louvre, Paris
 291 . . The Dispatch Mauritshuis, The Hague
 292 . . The Concert Kais. Fried. Museum, Berlin
 293 . . The Apple Parer Imperial Gallery, Vienna
 294 . . "Paternal Admonition" Kais. Fried. Museum, Berlin
 295 . . The Guitar Lesson National Gallery, London
 296 . . Lady washing her Hands Gallery, Dresden

Philips Wouwermann. 1619-1668.

- 297 . . Hotel Stable Gallery, Dresden
 298 . . Cavalry Skirmish on a Bridge Pinacoteca, Turin
 299 . . The Kicking Horse Ryks Museum, Amsterdam
 300 . . Laborers' Mid-day Meal Gallery, Cassel

Claes Berchem. 1620-1683.

- 301 . . The Ford Louvre, Paris
 302 . . Roman Fountain Gallery, Dulwich

Aelbert Cuyp. 1620-1691.

- 303 . . The Artist's Daughter Museum, Boston
 304 . . The Promenade Louvre, Paris
 305 . . River Scene Kais. Fried. Museum, Berlin
 306 . . Landscape with Cattle National Gallery, London
 307 . . Portrait of a Man National Gallery, London

Isaac van Ostade. 1621-1649.

- 308 . . Halt on the Journey Louvre, Paris
 309 . . Winter Scene National Gallery, London

Allart van Everdingen. 1621-1675.

- 310 . . Landscape by Evening Light Alte Pinakothek, Munich
 311 . . The Great Waterfall Gallery, Dresden

Karel du Jardin. 1622-1678.

- 312 . . The Pasture Louvre, Paris

Paulus Potter. 1625-1654.

- 313 . . The Young Bull Mauritshuis, The Hague
 314 . . The Wolf Hound Hermitage, St. Petersburg
 315 . . The Old Grey Hunter National Gallery, London
 316 . . Farmyard Scene Mauritshuis, The Hague

Jan Steen. 1626-1679.

- 317 . . The Marriage at Cana Gallery, Dresden
 318 . . The Sick Girl Ryks Museum, Amsterdam
 319 . . The Artist's Family Mauritshuis, The Hague

Jacob van Ruisdael. 1628?-1682.

- 320 . . The Waterfall National Gallery, London
 321 . . Troubled Sea Kais. Fried. Museum, Berlin
 322 . . Entrance to the Forest Louvre, Paris
 323 . . Edge of the Wood Gallery, Dulwich
 324 . . The Jewish Cemetery Gallery, Dresden
 325 . . Bentheim Castle Gallery, Dresden

Melchior d'Hondecoeter. 1636-1695.

- 351 . . . Eagles attacking Fowl Louvre, Paris

Meindert Hobbema. 1638-1709.

- 352 . . . Watermill National Gallery, London
 353 . . . Middleharnais Avenue National Gallery, London

Caspar Netscher. 1639-1684.

- 354 . . . The Letter Writer Gallery, Dresden
 355 . . . Lady at a Spinning Wheel National Gallery, London
 356 . . . Madame de Montéspan Gallery, Dresden

Jan Weenix. 1640-1719.

- 357 . . . A Dead Hare Alte Pinakothek, Munich

Godfried Schalken. 1643-1706.

- 358 . . . Girl with a Candle Gallery, Dresden

Adriaen van der Werff. 1659-1722.

- 359 . . . Dancing Nymphs Louvre, Paris

Willem van Mieris. 1662-1747.

- 360 . . . Market Stall Fitzwilliam Collection, Cambridge
 361 . . . The Trumpeter Gallery, Dresden

Jan van Huysum. 1682-1749.

- 362 . . . Fruit and Flowers Louvre, Paris

GERMAN SCHOOL.**Meister von Soest. fl. 1250-1270.**

- 363 . . . The Trinity: Triptych Kais. Fried. Museum, Berlin

Meister Wilhelm. fl. Late Fourteenth Century.

- 364 . . . Madonna of the Bean Flower: Triptych . . . Museum, Cologne

Late Fourteenth Century?

- 365 . . . Imhoff Altarpiece St. Lorenz, Nuremberg

Stephan Lochner. d. 1451.

- 366 . . . Madonna of the Rose Arbor Museum, Cologne

- 367 . . Adoration of the Magi: Center of Triptych, Cathedral, Cologne
 368 . . St. Ursula: St. Gereon: Wings of 367 (inside).
 369 . . Annunciation: Wings of 367 (outside).

Frederick Herlen. 1449?-1491?

- 370 . . Annunciation St. George, Dinkelsbühl

Master of the Life of Mary. fl. 1460-1480.

- 371 . . Presentation of the Virgin Alte Pinakothek, Munich

Nuremberg Master. fl. 1460-1500.

- 372 . . Crucifixion Kais. Fried. Museum, Berlin

Master of the Lyversberg Passion fl. 1463-1480.

- 373 . . Three Marias at the Tomb Museum, Cologne

Master of Cologne. Fifteenth Century.

- 374 . . Descent from the Cross Louvre, Paris

Michael Wolgemut. 1434-1519.

- 375 . . Crucifixion Alte Pinakothek, Munich
 376 . . Vision of St. Bernard Germanic Museum, Nuremberg

Martin Schongauer. c. 1450-1491.

- 377 . . Nativity (attribution questioned) Alte Pinakothek, Munich
 378 . . Christ before Pilate Museum, Brussels

Bartholomäus Zeitblom. c. 1450-1518.

- 379 . . Madonna with Saints Germanic Museum, Nuremberg

Hans Holbein, the Elder. c. 1460-1524.

- 380 . . St. Sebastian: Center of Triptych Alte Pinakothek, Munich
 381 . . SS. Elizabeth and Barbara: Wings of 380 (inside).
 382 . . Annunciation: Wings of 380 (outside).

Master of the Death of Mary. d. 1540.

- 383 . . Death of Mary: Center of Triptych Alte Pinakothek, Munich
 384 . . Donors, with Patron Saints: Wings of 383.

Hans von Kulmbach. d. 1540?

- 385 . . St. George St. Lorenz, Nuremberg
 386 . . Adoration of the Magi Kais. Fried. Museum, Berlin

Albrecht Dürer. 1471-1528.

- 387 . . Dürer at Thirteen: Drawing Albertina, Vienna
 388 . . Prodigious Son: Engraving.
 389 . . Madonna, with SS Anthony and Sebastian . . Gallery, Dresden
 390 . . Dürer's Father Uffizi, Florence
 391 . . Portrait of Dürer (1500) Alte Pinakothek, Munich
 392 . . Descent from the Cross Alte Pinakothek, Munich
 393 . . SS. George and Eustace: Wings of
 Paumgartner Altarpiece Alte Pinakothek, Munich
 394 . . St. Eustace (before restoration: cf 393).
 395 . . Adoration of the Magi. Uffizi, Florence
 396 . . Virgin and Child: detail of 395.
 397 . . The Great White Horse: Engraving.
 398 . . Legend of St. Eustace: Engraving.
 399 . . Madonna and Child Kais. Fried. Museum, Berlin
 400 . . Christ on the Cross Gallery, Dresden
 401 . . Portrait of a Lady Kais. Fried. Museum, Berlin
 402 . . Adam and Eve Prado, Madrid
 403 . . Adoration of the Trinity Imperial Gallery, Vienna
 404 . . Knight, Death and the Devil: Engraving.
 405 . . Melancholy: Engraving.
 406 . . Madonna Crowned by Angels: Engraving.
 407 . . St. Anthony: Engraving.
 408 . . Praying Hands: Drawing Albertina, Vienna
 409 . . Portrait of Maximilian Imperial Gallery, Vienna
 410 . . Bernard van Orley Gallery, Dresden
 411 . . Hans Imhoff (?) Prado, Madrid
 412 . . Hieronymus Holzschuher Kais. Fried. Museum, Berlin
 413 . . St. John and St. Peter Alte Pinakothek, Munich
 414 . . St. Paul and St. Mark Alte Pinakothek, Munich

Lucas Cranach, the Elder. 1472-1553.

- 415 . . Repose in Egypt Kais. Fried. Museum, Berlin
 416 . . Portrait of a Lady National Gallery, London

- 417 . . Judith Imperial Gallery, Vienna
 418 . . Woman taken in Adultery Alte Pinakothek, Munich
 419 . . Crucifixion: Center of Triptych Stadt-kirche, Weimar
 420 . . Georg von Brandenburg: Sketch Gallery, Dresden
 421 . . Dr. Jean Scheuring Museum, Brussels
- Hans Baldung Grien. c. 1475-1545.**
- 422 . . Adoration of the Magi: Triptych Alte Pinakothek, Munich
 423 . . Death and the Lady Museum, Basle
- Hans Burgkmair, the Elder. 1473-1531.**
- 424 . . Burgkmair and his Wife Imperial Gallery, Vienna
 425 . . Madonna and Child Germanic Museum, Nuremberg
- Albrecht Altdorfer. c. 1488-1538.**
- 426 . . Taking the Body of St. Quirinus
 from the Water Germanic Museum, Nuremberg
 427 . . Repose in Egypt Kais. Fried. Museum, Berlin
- Matthias Grünewald fl. 1518-1530?**
- 428 . . SS. Erasmus and Mauritius Alte Pinakothek, Munich
- Hans Holbein, the Younger. 1497-1543.**
- 429 . . Boniface Amerbach Museum, Basle
 430 . . The Dead Christ Museum, Basle
 431 . . Portrait of Erasmus Louvre, Paris
 432 . . Madonna of Burgomaster Meyer Museum, Darmstadt
 433 . . Madonna of Burgomaster Meyer (copy) Gallery, Dresden
 434 . . Holbein's Wife and Children Museum, Basle
 435 . . Georg Gisze Kais. Fried. Museum, Berlin
 436 . . The Ambassadors National Gallery, London
 437 . . Robert Cheseman with Falcon Mauritshuis, The Hague
 438 . . Jane Seymour Imperial Gallery, Vienna
 439 . . Hubert Morett Gallery, Dresden
 440 . . Christina, Princess of Denmark National Gallery, London
 441 . . Head of Melancthon: Drawing Royal Collection, Windsor
 442 . . Portrait Study of Clinton: Drawing, Royal Collection, Windsor
- Georg Pencz. 1500-1550.**
- 443 . . Schwetzer and his Wife Kais. Fried. Museum, Berlin

Christoph Amberger. c. 1500-1561?

- 444 . Portrait of a Man National Gallery, London
 445 . . Sebastian Münster Kais. Fried. Museum, Berlin

Heinrich Aldegrever. c. 1502-1558?

- 446 . Portrait of a Youth Liechtenstein, Vienna

Bartel Beham. 1502-1540.

- 447 . . SS. Crispin and Crispinianus Kais. Fried. Museum, Berlin

Anton Raphael Mengs. 1728-1774.

- 448 . . Maria Josefa, Archduchess of Austria Prado, Madrid
 449 . . Louis de Silvestre Gallery, Dresden
 450 . . Parnassus Villa Albani, Rome

GERMAN SCULPTURE.**Bishop Bernward. Eleventh Century.**

- 451 . Upper Half of Bronze Doors Cathedral, Hildesheim
 452 . Lower Half of Bronze Doors Cathedral, Hildesheim

Thirteenth Century.

- 453 . Baptismal Font Cathedral, Hildesheim
 454 . Archangel Michael Choir, Cathedral, Bamberg
 455 . Equestrian Statue of Conrad III. (?) Cathedral, Bamberg
 456 . Worship of the Virgin Cathedral, Bamberg
 457 . The Synagogue; The Church Cathedral, Bamberg
 458 . Count Ekkehard and Countess Uta Cathedral, Naumburg
 459 . A Canoness Cathedral, Naumburg
 460 . . Tomb of Henry the Lion and his Consort,
 Matilda Cathedral, Brunswick
 461 . Adoration of the Magi . . . Golden Gate, Cathedral, Freiberg
 462 . Christ between Mary and John;
 Abraham's Sacrifice . . . Pulpit, Castle Chapel, Wechselburg
 463 . . Moses; Christ between Mary
 and John Pulpit, Castle Chapel, Wechselburg
 464 . . Figures from South Portal Cathedral, Strasburg
 465 . . Figures from North Portal Cathedral, Strasburg
 466 . Scenes from the Life of Christ Cathedral, Strasburg
 467 . . Death of Mary Cathedral, Strasburg

Fourteenth Century.

- 468 . . St. Bartholomew Germanic Museum, Nuremberg
 469 . . Death and Burial of Mary St. Sebaldus, Nuremberg
 470 . . Upper part of Bride's Door St. Sebaldus, Nuremberg

Fifteenth Century.

- 471 . . Mary Enthroned, with Saints Museum, Augsburg

Hans Schülein. fl. 1468-1502.

- 472 . . Scenes from the Passion.
 High Altar, Abbey Church, Tiefenbronn

Veit Stoss. 1440-1533?

- 473 . . Baptism of Christ Johannes Altar, St. Florian, Cracow
 474 . . Coronation of Mary Castle Chapel, Nuremberg
 475 . . The Angel's Greeting St. Lorenz, Nuremberg

Adam Krafft. 1440?-1507.

- 476 . . Second Station of the Cross Nuremberg
 477 . . Sixth Station of the Cross Nuremberg
 478 . . Seventh Station of the Cross Nuremberg
 479 . . Scenes from the Passion.
 Schreyer Tomb, St. Sebaldus, Nuremberg
 480 . . Relief over Gates Civic Weighing House, Nuremberg
 481 . . Madonna of Mercy
 Pergenstorfer Tomb, Frauenkirche, Nuremberg
 482 . . Ciborium St. Lorenz, Nuremberg

Tilman Riemenschneider. 1460?-1531.

- 483 . . The Last Supper, Altar of the Holy Blood, St. James, Rothenburg
 484 . . Adam and Eve, from Marien Kapelle.
 Collection of Historical Society, Palace, Würzburg
 485 . . Tomb of Bishop von Scherenberg Cathedral, Würzburg

Peter Vischer, the Elder. 1455-1529.

- 486 . . Shrine of St. Sebald St. Sebaldus, Nuremberg
 487 . . Peter Vischer: detail of 486.
 488 . . St. John the Evangelist: detail of 486.
 489 . . St. James: detail of 486.

Peter Vischer, and Others. Sixteenth Century.

- 490 . . Monument of Maximilian Court Church, Innsbruck
 491 . . Statues of Ancestors : detail of 490.
 492 . . Theodoric : detail of 490.
 493 . . King Arthur : detail of 490.
 494 . . Statue of Emperor Maximilian I. : detail of 490.

Peter Vischer, the Younger? 1487-1528.

- 495 . . Christ meeting the Sisters of Lazarus.
 Tomb of Margaretha Tucher, Cathedral, Regensburg
 496 . . Praying Madonna Germanic Museum, Nuremberg

Hans Brüggemann. c. 1470-5128.

- 497 . . Pilate showing Christ to the People Cathedral, Schleswig
 498 . . Incredulity of Thomas Cathedral, Schleswig

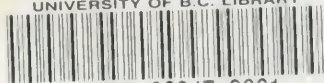
Andreas Schlüter. 1664-1714.

- 499 . . Dying Warrior, Number 2 Arsenal Court, Berlin
 500 . . Dying Warrior, Number 11 Arsenal Court, Berlin

NOTE.—Unanimity and precision in fixing dates and attributions, before the middle of the sixteenth century, are not yet attained by historians of Northern Schools of Art; new data are frequently brought to light which modify previously existing opinions. Although the dates given in the Catalogue are those generally accepted at the time of publication, the student using these illustrations should be ever watchful for further developments along the lines of chronology and authenticity.

The book is for use in
Library Cataloging Study

UNIVERSITY OF B.C. LIBRARY



3 9424 02947 9661

THE UNIVERSITY OF BRITISH COLUMBIA
LIBRARY

